



**JEPPESEN.**  
**NavData® Alert**

**!! URGENT !!**

**Date:** 11 October 2010

**Subject:** **Airspace**  
**Chicago, Illinois; O'Hare INTL (KORD)**  
**Class B Controlled Airspace**  
**Cycle 1011**

*Incorrect Altitudes and Boundaries*

Jeppesen NavData for cycle 1011, effective 21 October 2010, contains incorrect Class B Airspace information for Chicago, Illinois; O'Hare INTL (KORD). For correct information see the graphic and associated textual description on the following page.

**THEREFORE, EXERCISE CAUTION WHEN REFERENCING THE KORD CLASS B CONTROLLED AIRSPACE IN CYCLE 1011 NAVDATA.**

Revised coding will appear in Jeppesen NavData for cycle 1012, effective 18 November 2010. Until then an entry will appear in the NavData Change Notices beginning 29 October 2010, and this Alert will be posted on the Jeppesen Web site (<http://www.jeppesen.com/company/alerts/aviation-alerts.jsp?region=United States>).

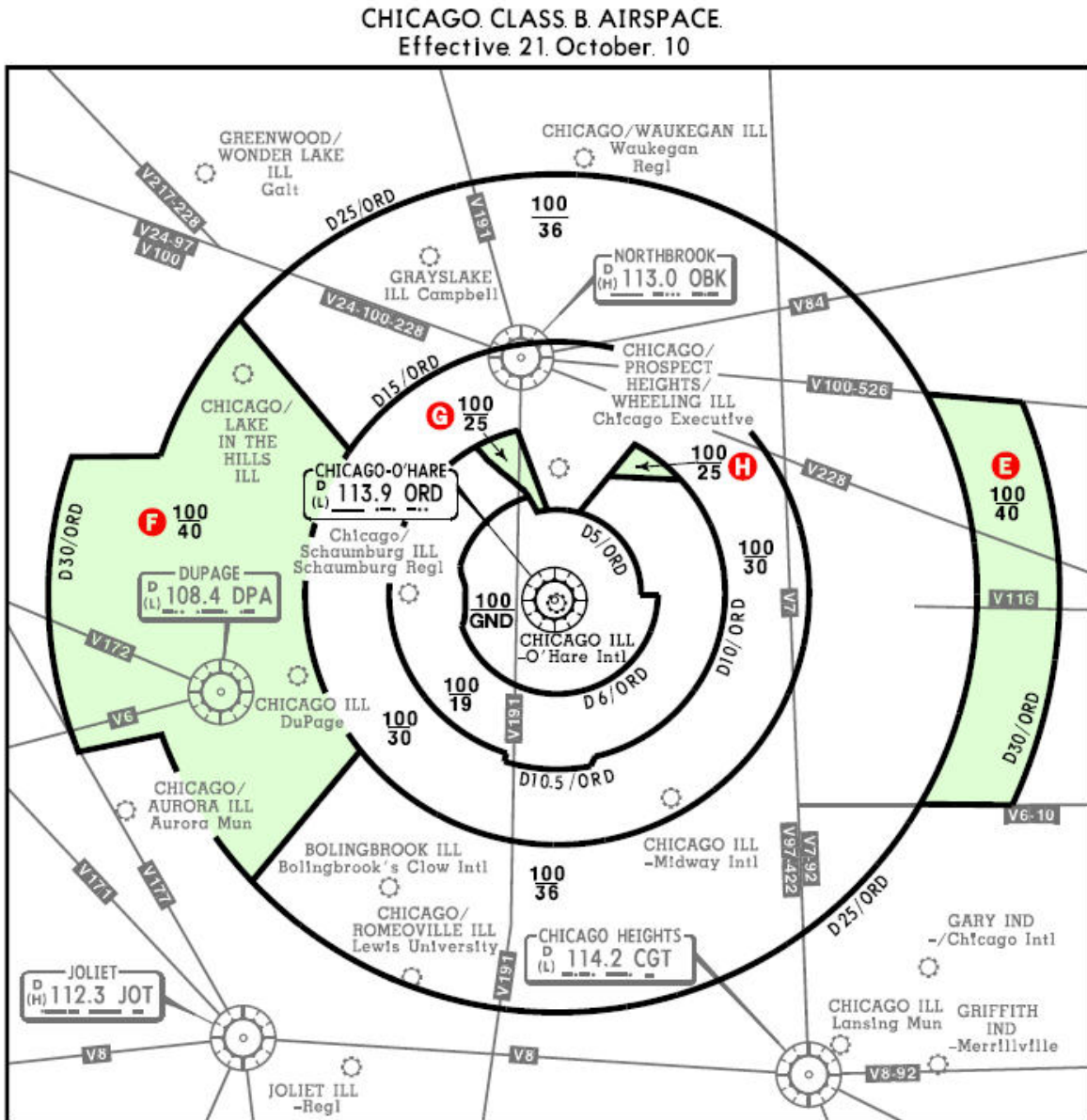
**WE STRONGLY URGE YOU TO MAKE THIS INFORMATION AVAILABLE TO APPROPRIATE CREW MEMBERS OR CUSTOMERS IMMEDIATELY!**

If you have questions concerning this NavData Alert, please contact Jeppesen Technical Support at:  
Phone: 303-328-4445  
E-mail: [navdatatechsupport@jeppesen.com](mailto:navdatatechsupport@jeppesen.com)

NavData Alerts are published to advise users of significant issues in Jeppesen navigation data which may affect flight operations or safety. They are distributed to affected ARINC 424 NavData users (avionics companies and other raw data users) and airlines receiving NavData directly from Jeppesen. Alerts are not distributed by Jeppesen to individual airline, business aviation or general aviation pilots, but are available to them on the Jeppesen Web site, [www.jeppesen.com](http://www.jeppesen.com). Different avionics equipment and computer systems use and display NavData and data derived from NavData differently. Avionics users should consult with their database update service provider for definitive information on whether their system is affected by this Alert.

The textual descriptions and graphic below contain the correct information for the Chicago Class B airspace, effective 21 Oct 10.

- Area E: (New) East side of KORD, over Lake Michigan, between D25 and D30 from ORD VORDME.
- Area F: West side of KORD expanded to D30 from ORD VORDME.
- Area G: Northwest of KORD expanded south to D5 from ORD VORDME.
- Area H: Northeast of KORD does not extend as far south.



If you have questions concerning this NavData Alert, please contact Jeppesen Technical Support at:  
 Phone: 303-328-4445  
 E-mail: [navdatatechsupport@jeppesen.com](mailto:navdatatechsupport@jeppesen.com)

NavData Alerts are published to advise users of significant issues in Jeppesen navigation data which may affect flight operations or safety. They are distributed to affected ARINC 424 NavData users (avionics companies and other raw data users) and airlines receiving NavData directly from Jeppesen. Alerts are not distributed by Jeppesen to individual airline, business aviation or general aviation pilots, but are available to them on the Jeppesen Web site, [www.jeppesen.com](http://www.jeppesen.com). Different avionics equipment and computer systems use and display NavData and data derived from NavData differently. Avionics users should consult with their database update service provider for definitive information on whether their system is affected by this Alert.