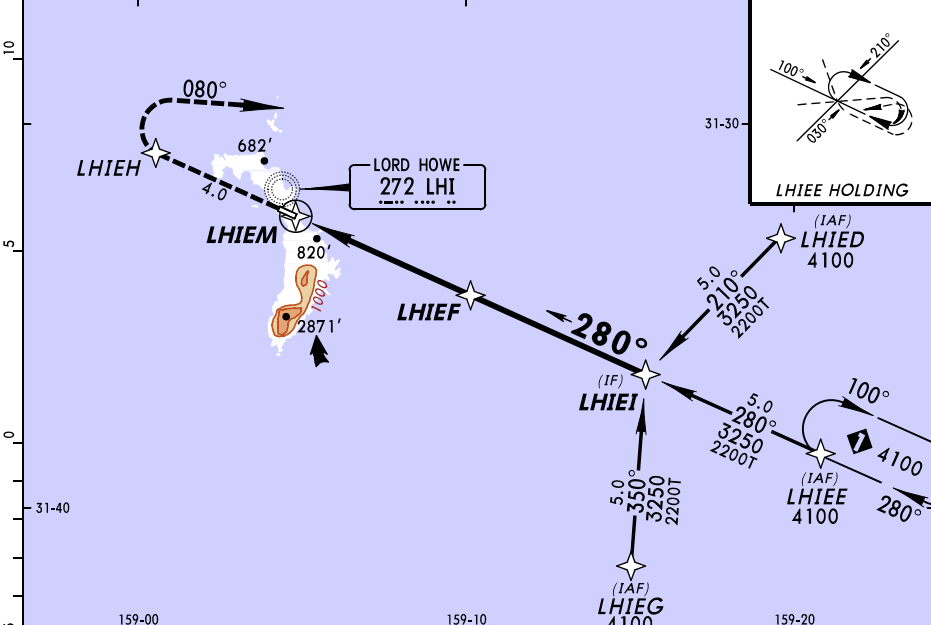
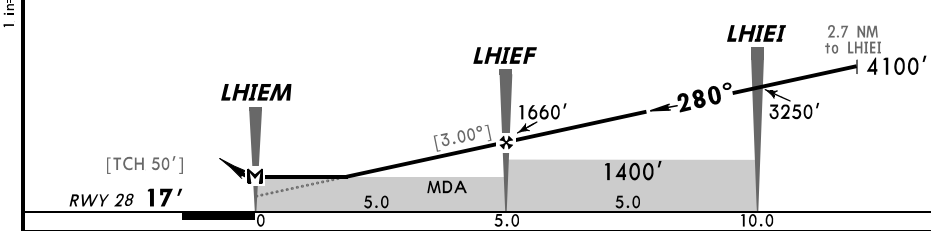


BRISBANE (FIA)			CTAF-R (AFRU)		
3467 5643 8867 13261 17904 (SELCAL)			126.7		
RNAV	Final Apch Crs 280°	Procedure Alt LHIEF 1660' (1643')	MDA(H) (CONDITIONAL) 1240' (1223')	Apt Elev 17' Rwy 28 17'	
MISSED APCH: Track direct to LHIEH. Then turn RIGHT, track 080°. Climb to 4100'.					
Alt Set: hPa Rwy Elev: 1 hPa Trans level: FL 110 Trans alt: 10000' 1. Max IAS for initial: 210 kts.					



NM to NEXT WPT	LHIEM	4.0	LHIEF	1.0	2.0	3.0	4.0	LHIEI	1.0	2.0	2.7
ALTITUDE		1340'	1660'	1980'	2300'	2610'	2930'	3250'	3570'	3890'	4100'



Gnd speed-Kts	70	90	100	120	140	160	➔ LHIEH
Descent angle [3.00°]	372	478	531	637	743	849	
MAP at LHIEM							

STRAIGHT-IN LANDING RWY 28				CIRCLE-TO-LAND				
Actual Aero QNH		Forecast Terminal QNH		Actual Aero QNH		Forecast Terminal QNH		
MDA(H) 1240' (1223')		MDA(H) 1340' (1323')		MDA(H) _____		MDA(H) _____		
A	5.0 km		5.0 km		90	1290' -2.4 km (1273')	1390' -2.4 km	
B	5.0 km		5.0 km		120	1380' -4.0 km (1363')	1480' -4.0 km (1463')	
C	5.0 km		5.0 km		140	NOT APPLICABLE	NOT APPLICABLE	
D	NOT APPLICABLE		NOT APPLICABLE		D	NOT APPLICABLE	NOT APPLICABLE	