

# Business Aviation Dispatch Recurrent

SEPTEMBER 19-21, 2017 – DENVER, CO (JEPPESEN HEADQUARTERS)

## COURSE OVERVIEW

This course is designed for the Business Aviation licensed dispatcher community. Core FAA Dispatch License subject matter is reviewed with emphasis and dialogue on the challenges faced in today's corporate scheduling environment.

## COURSE DATES & LOCATION

September 19-21, 2017 at Jeppesen Denver Headquarters, 55 Inverness Dr East, Englewood, CO 80112.

## COURSE SYLLABUS

Lesson plan designed by a "Business Aviation Training Board" consisting of the Part 91, 91K, and 135 Operators (board member list on right).

### Meteorology

- Weather Charts and Symbol Review
- METAR Review / Scenarios
- TAF Review / Scenarios
- Clear Air Turbulence
- Additional Text Weather
- NOTAM Examples
- Real Weather Scenarios
- Group Discussion

### Aeronautical Charting

- Chart Types & Chart Management Overview
- Approach Procedures Overview
- Charting Symbolology
- RNP Approaches
- RNAV Approaches
- Group Discussion

### Fatigue Risk Management—FRMS

- Concepts overview and review of AC 120-103A and ICAO-IATA-IFALPA Operators Guide.
- Facilitated group discussion.

### NextGen & FANS Requirements

- Overview of ADS-B / ADS-C, CPDLC, ACARS, Required Communication Performance (RCP), Departure Clearances (DCL).
- Regulations for specific avionics
- Regulations for use

### Extended Range Operations

- Requirements Overview
- EROPS/ETOPS Awareness
- Suitables vs Adequate Airport Differences
- Terminology
- Decompression/Oxygen Requirements

### FAA Regulations

- CFR Part 61 Regulations Review
- CFR Part 91 Regulations Review

### International Trip Planning

- Customs, ESTA, EURO Control Flight Validator, Slot Times, Overflight Exemption Program, eAPIS.

### Flight Planning Scenarios

- Domestic Flight Plans
- North Atlantic Crossing Flight Plans

### Runway Analysis

- Obstacle Data
- Aircraft Performance Data
- OpsData Business Rules Overview
- Runway Analysis Output Breakdown

### Weight and Balance

- Summary of Weight & Balance
- Example of Load and Trim Sheet
- Awareness of Weight & Balance
- Key Terms
- Operational Procedures Overview

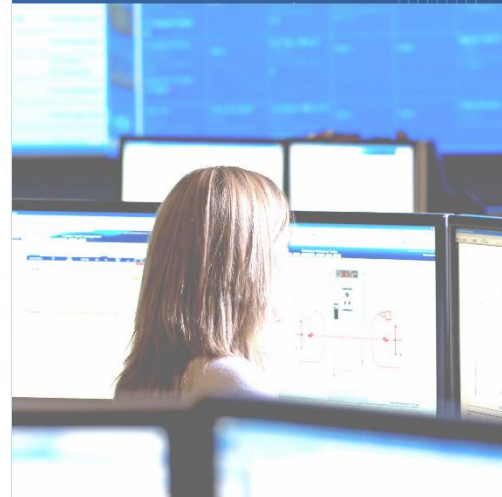
## WHO SHOULD ATTEND

- Licensed Business Aviation Dispatch personnel seeking to update and refresh their certification.
- Business aircraft flight department employees who share the responsibility of scheduling or dispatching and wish to improve knowledge and job effectiveness.
- Operational managers who wish to better understand the technical aspects of dispatching and operational control techniques.
- Refresher training for professional pilots.
- Aviation employees who wish to strengthen their breadth and depth of knowledge.

## COURSE PRICING & ACCOMODATIONS

\$975 per person tuition. Suggested hotel; Embassy Suites Denver - Tech Center, 10250 E Costilla Ave, Centennial, CO, (303) 792-0433

[CLICK HERE TO REGISTER](#)



## TRAINING BOARD MEMBERS

Thomas Stewart  
Executive Director-Aviation  
JP Morgan Chase

Shannon Rupe  
Global Aviation, Dispatch Manager  
Hewlett Packard Enterprise

## CONTACT JEPPESEN

Toll Free: +1-800-537-7292  
Direct: +1-303-328-4423  
Email: [jeppesenacademy@jeppesen.com](mailto:jeppesenacademy@jeppesen.com)