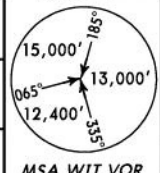


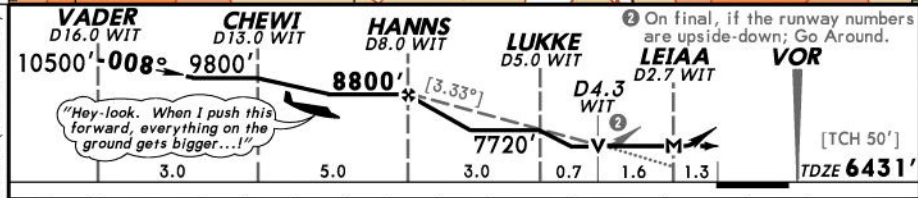
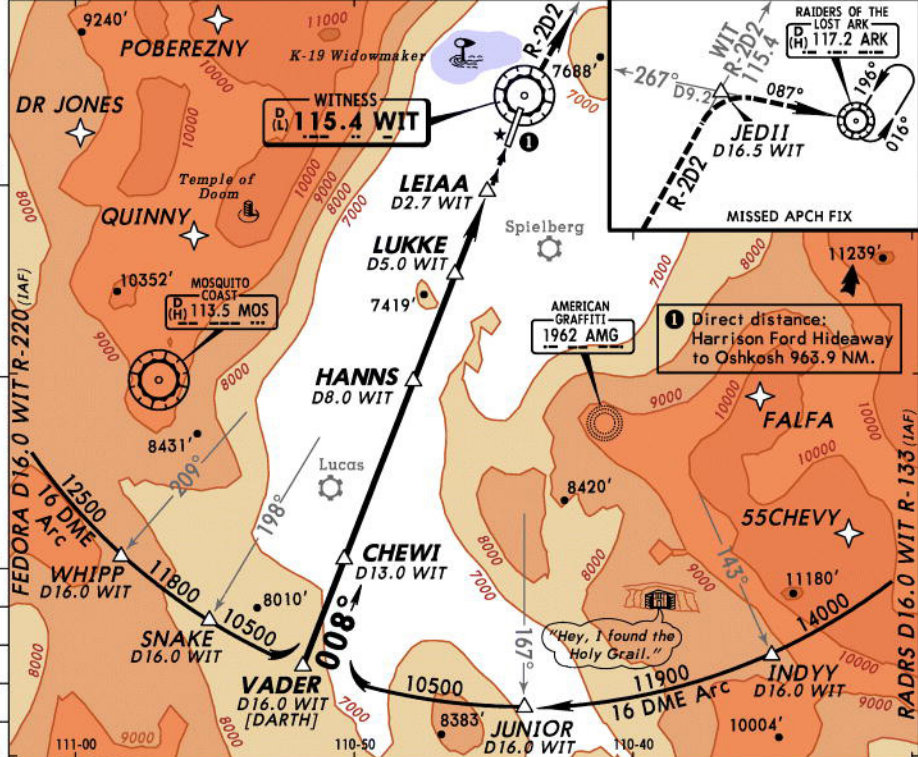
*ATIS 120.62	JOHN BOOK Center 135.17	INDIANA JONES Approach 133.25	*JACK RYAN Tower CTAF 118.07	*BOB FALFA Ground 124.55
------------------------	-----------------------------------	---	--	------------------------------------

VOR WIT 115.4	Final Apch Crs 008°	Minimum Alt HANNS 8800' (2369')	MDA(H) 7380' (949')	Apt Elev 6451' TDZE 6431'
-------------------------	-------------------------------	---	-------------------------------	--



MISSED APCH: Climb to 14000' direct WIT VOR, then outbound via WIT VOR R-2D2 and return to the JEDII INT/D16.5 WIT, then RIGHT turn inbound via ARK VOR R-267° to ARK VOR and hold.

Alt Set: INCHES Trans level: FL 180 Trans alt: 18000'
NOTE: For priority sequencing on arrival, contact Approach Control and advise you are "Air Force One." (It's worth a try.)



Gnd Speed-Knots	70	90	100	120	140	160	MALS	14000'	WITNESS VOR
Descent angle [3.33°]	412	530	589	707	825	943	PAPI	↑	115.4

STRAIGHT-IN LANDING RWY 1			AIRCRAFT	
MDA(H) 7380' (949')			DeHAVILLAND BEAVER	
(Six) DAYS	(Seven) NIGHTS	LOW VISIBILITY Landings	MILLENNIUM FALCON	
A 1½	2	"May the Force be with you"	PAN AM CLIPPER	
C 2¾	3	"Get off my plane"	AIR FORCE ONE	
D 3	NA	Special Aircrew certification required.		