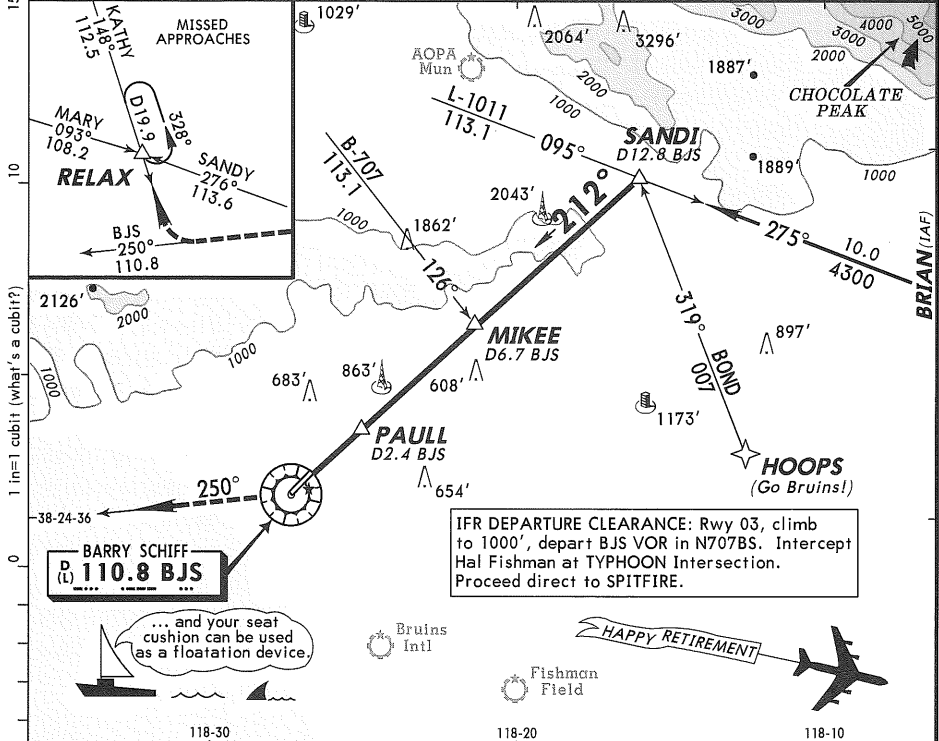


SANTA MONICA, CALIF
BARRY SCHIFF MUN
VOR or GPS
Rwy 21
VOR 110.8 BJS
 Apt. Elev 175'

*8-US **119.5** (ACARS, TWIP, TWERP, PDC & PDQ=OTS UFN)
 SOCIAL BUTTERFLY Approach (R) **128.5**
 *SCHIFF Tower CTAF **120.1**
 *Ground **121.9**
 When Twr inop, don't hit anything and don't hurt anybody.

Flying-
TWA
 34 Years
 Writing-
AOPA
 25 Years

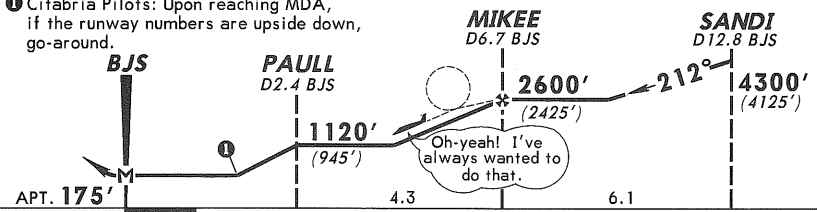
Contributions
 to
 Aviation



IFR DEPARTURE CLEARANCE: Rwy 03, climb to 1000', depart BJS VOR in N707BS. Intercept Hal Fishman at TYPHOON Intersection. Proceed direct to SPITFIRE.

... and your seat cushion can be used as a floatation device.

1 Citabria Pilots: Upon reaching MDA, if the runway numbers are upside down, go-around.



MISSED DEADLINE: Climb to 4000' outbound via **BJS VOR R-250** and inbound on **KATHY R-148** to **RELAX**. Go flying, travelling, writing, sailing or catch a ball game or a movie.

STRAIGHT-IN LANDING RWY 21				CIRCLE-TO-LAND	
MDA(H) 500'(325')				Not Authorized over the Rocks Northwest of Rwy 3-21	
FULL of...?	Sure, I see it.	With Gadgets On	With Gadgets Off	Max Kts.	MDA(H)
A				90	660'(485')-1
B		1/2	3/4	120	1120'(945')-1 1/4
C	0/0	1/4		140	660'(485')-1 1/2
D		NA, NA, NA, NA	NA, NA, NA, NA	165	Hey, Hey
Gnd Speed-Nuts					
GS (BS or CS?)					
Happy Landings for BJS					

Hey, what do all these circles, lines and numbers mean on these charts?