



# C-MAP BY JEPPESEN MM3D CHART GUIDE

*"C-MAP by Jeppesen MM3D charts  
provide the best worldwide coverage  
for your Furuno NavNet 3D."*





# CONTENTS

Introduction.....	5
Compatibility .....	5
MM3D Chart Packs .....	6
Retail Pricing .....	6
Coverage .....	6
Pre-Loaded C-MAP by Jeppesen MM3D data .....	7
Pre-Loaded Chart List.....	7
Furuno MM3D Hard Drive .....	8
<b>C-MAP BY JEPPESEN MM3D COVERAGE</b> .....	9
NORTH AMERICA .....	9
WVJNAM021MAP – Canada North & East .....	9
WVJNAM022MAP – USA East Coast and Bahamas .....	9
WVJNAM023MAP – Gulf of Mexico, Great Lakes & Rivers.....	10
WVJNAM024MAP – West Coast & Hawaii.....	10
WVNJNAM025MAP – Canada West .....	11
WVJNAM026MAP – Great Lakes & Canadian Maritimes.....	11
WVJNAM027MAP – Central America & Caribbean.....	12
WVJNAM028MAP - Alaska .....	12
MWVJNAM033MAP – Atl. Coast, Gulf of MX &.....	13
MWVJNAM035MAP – Pacific Coast and Central America.....	13
SOUTH AMERICA.....	14
WVJSAM500MAP – Costa Rica to Chile to Falklands .....	14
WVJSAM501MAP – Gulf of Paria to Cape Horn.....	14
MWVJSAM504MAP – South America & US Gulf Coast.....	15
MAX LAKES .....	15
WVJNAM017MAP – MAX Lakes North .....	15
WVJNAM018MAP – MAX Lakes East.....	16
WVJNAM019MAP – MAX Lakes South .....	16

WVJNAM020MAP – MAX Lakes West .....	17
WVJNAM029MAP – MAX Lakes Alaska.....	17
WVJNAM048MAP – MAX Lakes Canada.....	18
WR01MAP – Bahamas Explorer Chart – RASTER.....	18
<b>C-MAP by Jeppesen MM3D Worldwide Chart List .....</b>	<b>19</b>
<b>Install &amp; License C-MAP by Jeppesen MM3D data.....</b>	<b>21</b>
Purchasing Chart Unlocks.....	21
Jeppesen Contact.....	21
Jeppesen Account Managers .....	21
System ID.....	22
How to locate the SYSTEM ID .....	22
Memory Slots - About .....	23
Data List.....	23
Status Types .....	23
Downloading C-MAP by Jeppesen MM3D Data .....	24
Transferring C-MAP by Jeppesen MM3D Data .....	25
Loading C-MAP by Jeppesen MM3D data to NavNet .....	27
Unlocking C-MAP by Jeppesen MM3D data .....	28
Updating C-MAP by Jeppesen MM3D Data .....	29
Upgrade Pricing .....	29
About ‘Minor’ and ‘Major’ Chart Versions.....	29

## Introduction

---

C-MAP by Jeppesen MM3D charts are based on the same reliable navigation data used in MAX.

Our data offers the best in-depth worldwide chart coverage based on tens of thousands of official and proprietary charts.

This booklet provides coverage details and guidance on downloading, installing and licensing C-MAP by Jeppesen MM3D charts.

***If additional assistance is required, please call Jeppesen's dedicated sales and support staff at 800.424.2627.***

## Compatibility

---

C-MAP by Jeppesen MM3D charts are compatible with Furuno NavNet 3D Multi Function Displays, MaxSea Time Zero and Nobeltec Trident.

Compatibility with our charts starts with software version v2.05+ for NavNet MFD and v1.9.0 for MaxSea TimeZero.

- **MFD8/12 with v2.05 software can only use 2GB SD Cards to transfer chart data.**
- **MFD8/12 with v2.07 software can use SD cards up to 32GB to transfer chart data.**
- **MFDBB can use USB Flash Drive to transfer chart data. (Transferring data by USB Flash Drive on the MFDBB is faster than via SD card.)**

## MM3D Chart Packs

---

Each MM3D chart pack includes:

- **C-MAP by Jeppesen MM3D charts\***
- **3D data\*\***
- **Satellite Photo\*\***

*\*C-MAP by Jeppesen MM3D Vector files are locked and require licensing prior to use.*

*\*\*3D Data and Satellite photos included in MM3D chart packs for the US is the same data used for NOAA. 3D and Satellite Photos for the US require NO unlock. Customers can purchase satellite photos (outside the US) for \$200 on selected areas. Inclusion of 3D/Sat is based on data availability.*

## Retail Pricing

---

Each chart pack is valued at:

- **\$300 – Wide**
- **\$600 – MegaWide**
- 

## Coverage

---

C-MAP by Jeppesen MM3D charts are available worldwide. The coverage boundaries are equivalent to that currently available in C-MAP MAX Wide and MegaWide. *(Local coverage is not available)*

Our data offers the best in-depth worldwide chart coverage based on tens of thousands of official and proprietary charts.

For a complete list of available C-MAP by Jeppesen MM3D titles, please visit [www.mapmedia.com](http://www.mapmedia.com).

## **Pre-Loaded C-MAP by Jeppesen MM3D data**

---

Select C-MAP by Jeppesen MM3D files are pre-loaded in the NavNet 3D based on the units load package:

- **Furuno NavNet 3D units manufactured since May 2010 come pre-loaded with select C-MAP by Jeppesen MM3D charts.**
- **MFD8 supports the 40GB HDD.**
- **MFD12/MFDDB units manufactured since December 2010 support the 80GB HDD.**

## **Pre-Loaded Chart List**

---

<b>MM3D Chart Code</b>	<b>Description</b>	<b>Load Package</b>
WVJNAM022MAP	East Coast & Bahamas	40GB & 80GB
WVJNAM023MAP	Gulf, Great Lakes & Rivers	40GB & 80GB
WVJNAM024MAP	West Coast & Hawaii	40GB & 80GB
WVJNAM025MAP	Canada West	80GB
WVJNAM026MAP	Great Lakes & Maritimes	80GB
WVJNAM027MAP	Central Amer. & Caribbean	80GB
WVJNAM028MAP	Alaska	80GB

## Furuno MM3D Hard Drive

---

Furuno USA can supply authorized Furuno dealers with a hard drive containing ALL MM3D chart files including C-MAP by Jeppesen MM3D data.

C-MAP by Jeppesen MM3D chart files are located on the hard drive under the **JEPPESEN** folder (see image below).



In the Jeppesen folder, chart packs are divided by region. Additionally, some chart packs contain Satellite Photos; this data is optional and will be listed as "SDCARD\_OPT".

MM3D data can also be downloaded from [www.mapmedia.com](http://www.mapmedia.com).

# C-MAP BY JEPPESEN MM3D COVERAGE

---

## NORTH AMERICA

---

### WVJNAM021MAP – Canada North & East

---



**MM3D File Name: SDVJNAM021MAP0x.dbv**

**Retail Price: \$300.00 – Wide**

### WVJNAM022MAP – USA East Coast and Bahamas

---



**MM3D File Name: SDVJNAM022MAP0x.dbv**

**Retail Price: \$300.00 – Wide**

## WVJNAM023MAP – Gulf of Mexico, Great Lakes & Rivers

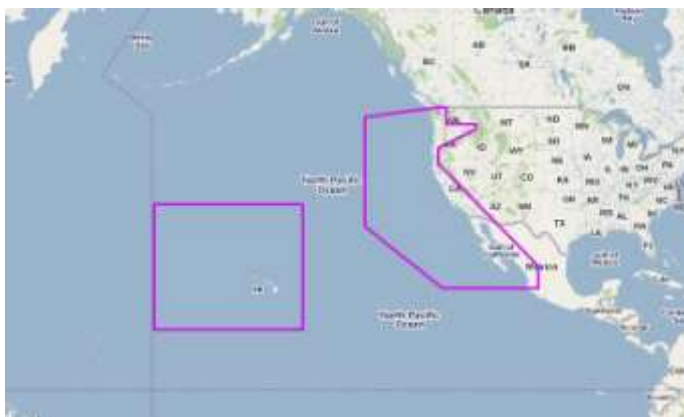
---



**MM3D File Name: SDVJNAM023MAP0x.dbv**  
**Retail Price: \$300.00 – Wide**

## WVJNAM024MAP – West Coast & Hawaii

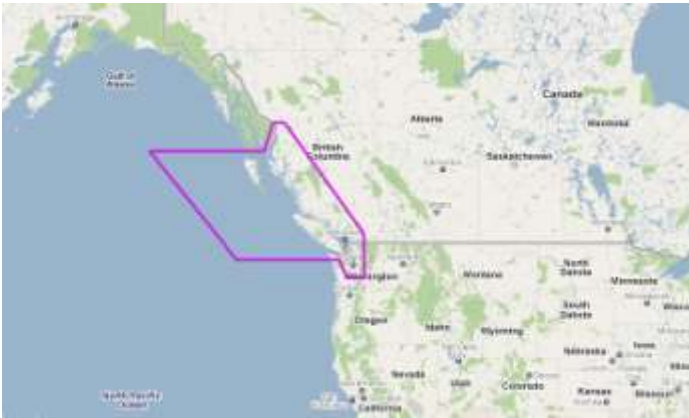
---



**MM3D File Name: SDVJNAM024MAP0x.dbv**  
**Retail Price: \$300.00 – Wide**

## WVNJNAM025MAP – Canada West

---



***MM3D File Name: SDVJNAM025MAP0x.dbv***  
***Retail Price: \$300.00 – Wide***

## WVNJNAM026MAP – Great Lakes & Canadian Maritimes

---



***MM3D File Name: SDVJNAM026MAP0x.dbv***  
***Retail Price: \$300.00 – Wide***

## WVJNAM027MAP – Central America & Caribbean

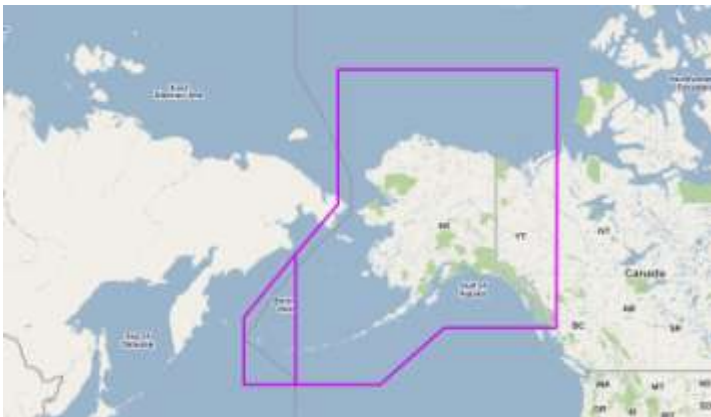
---



**MM3D File Name: SDVJNAM027MAP0x.dbv**  
**Retail Price: \$300.00 – Wide**

## WVJNAM028MAP - Alaska

---



**MM3D File Name: SDVJNAM028MAP0x.dbv**  
**Retail Price: \$300.00 – Wide**

MWVJNAM033MAP – Atl. Coast, Gulf of MX & Caribbean

---



**MM3D File Name: (2files)**  
**SDVJNAM033NMAP0x.dbv and SDVJNAM033SMAP0x.dbv**  
**Retail Price: \$600.00 – MegaWide**

MWVJNAM035MAP – Pacific Coast and Central America

---



**MM3D File Name: SDVJNAM035NMAP0x.dbv**  
**Retail Price: \$600.00 – MegaWide**

# SOUTH AMERICA

---

## WVJSAM500MAP – Costa Rica to Chile to Falklands

---



**MM3D File Name: SDVJSAM500MAP0x.dbv**  
**Retail Price: \$300.00 –Wide**

## WVJSAM501MAP – Gulf of Paria to Cape Horn

---



**MM3D File Name: SDVJSAM501MAP0x.dbv**  
**Retail Price: \$300.00 –Wide**

## MWVJSAM504MAP – South America & US Gulf Coast

---



**MM3D File Name: SDVJSAM504MAP0x.dbv**  
**Retail Price: \$600.00 –MegaWide**

## MAX LAKES

---

### WVJNAM017MAP – MAX Lakes North

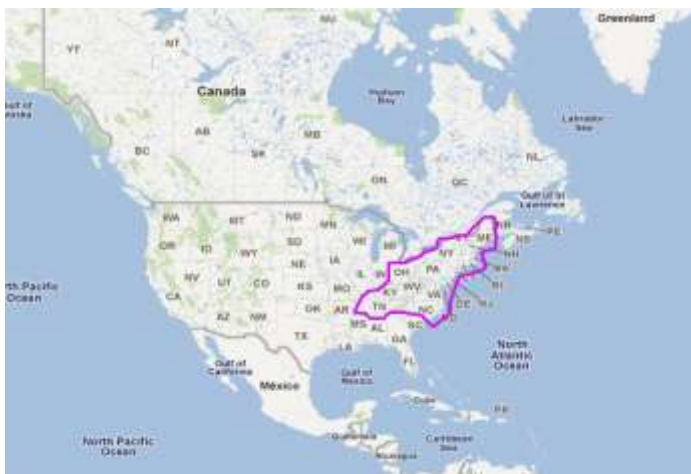
---



**MM3D File Name: SDVJNAM017MAP0x.dbv**  
**Retail Price: \$300.00 – Wide**

## WVJNAM018MAP – MAX Lakes East

---



**MM3D File Name: SDVJNAM018MAP0x.dbv**

**Retail Price: \$300.00 – Wide**

## WVJNAM019MAP – MAX Lakes South

---



**MM3D File Name: SDVJNAM019MAP0x.dbv**

**Retail Price: \$300.00 – Wide**

## WVJNAM020MAP – MAX Lakes West

---

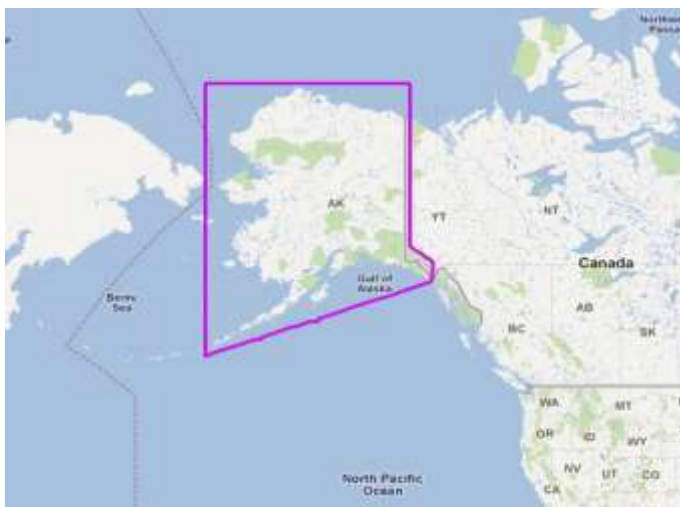


**MM3D File Name: SDVJNAM020MAP0x.dbv**

**Retail Price: \$300.00 – Wide**

## WVJNAM029MAP – MAX Lakes Alaska

---



**MM3D File Name: SDVJNAM029MAP0x.dbv**

**Retail Price: \$300.00 – Wide**

## WVJNAM048MAP – MAX Lakes Canada

---



**MM3D File Name: SDVJNAM048MAP0x.dbv**  
**Retail Price: \$300.00 – Wide**

## WR01MAP – Bahamas Explorer Chart – RASTER

---



**MM3D File Name: SDR01P01MAP0x.dbr**  
**Retail Price: \$300.00 – Wide**

**All C-MAP by Jeppesen MM3D chart files are available on the Furuno  
Hard Drive or for download at [www.mapmedia.com](http://www.mapmedia.com)**

# C-MAP by Jeppesen MM3D Worldwide Chart List

Chart Code	Chart Title
<b>MEGAWIDE</b>	
<b>MWVJAFM003MAP</b>	Antarctica
<b>MWVJAFM005MAP</b>	Red Sea, Arab Gulf and Africa
<b>MWVJANM001MAP</b>	East China Sea to Kamchatka
<b>MWVJASM001MAP</b>	Gulf of Thailand to Yellow Sea
<b>MWVJAUM001MAP</b>	New Zealand and Pacific Islands
<b>MWVJAUM007MAP</b>	AUSTRALIA, NEW ZEALAND & OCEANIA
<b>MWVJEMM017MAP</b>	Mediterranean and Black Sea
<b>MWVJENM018MAP</b>	European Inland Waters
<b>MWVJENM019MAP</b>	North and Baltic Seas
<b>MWVJEW009MAP</b>	Atlantic European Coasts
<b>MWVJEW010MAP</b>	West European Coasts and West Med.
<b>MWVJINM001MAP</b>	Singapore to South China Sea
<b>MWVJINM002MAP</b>	Indian Ocean
<b>MWVJRSM001MAP</b>	Russian Federation - North West
<b>MWVJRSM002MAP</b>	Russian Federation North East
<b>MWVJRSM219MAP</b>	Russia - Moskva - Oka
<b>WIDE</b>	
<b>WVJAFM209MAP</b>	Africa - East
<b>WVJAFM210MAP</b>	Africa - West
<b>WVJANM013MAP</b>	Kamchatka Peninsula and Kuril Islands
<b>WVJANM202MAP</b>	Korea Strait to Okinawa Shima
<b>WVJANM203MAP</b>	Yellow Sea to Malaya
<b>WVJASM201MAP</b>	Gulf of Thailand to Hainan Dao
<b>WVJASM205MAP</b>	Philippines
<b>WVJASM206MAP</b>	Java and Indonesia
<b>WVJASM214MAP</b>	China, Taiwan and Vietnam
<b>WVJAUM005MAP</b>	Australia
<b>WVJAUM207MAP</b>	Papua New Guinea
<b>WVJAUM210MAP</b>	Solomon and Vanuatu Islands
<b>WVJAUM222MAP</b>	New Zealand, Chatham Island & Kermadec Island
<b>WVJEMM076MAP</b>	South-West European Coasts
<b>WVJEMM111MAP</b>	East Mediterranean, Black Sea

<b>WVJEMM112MAP</b>	South Mediterranean and Aegean Seas
<b>WVJENM068MAP</b>	Central European Lakes
<b>WVJENM076MAP</b>	Belgium Inland and Rhine River
<b>WVJENM080MAP</b>	Germany Inland
<b>WVJENM082MAP</b>	River Danube
<b>WVJENM084MAP</b>	Dniepr River
<b>WVJENM299MAP</b>	Baltic Sea and Denmark
<b>WVJENM300MAP</b>	North Sea and Denmark
<b>WVJENM326MAP</b>	Finland Lakes
<b>WVJENM405MAP</b>	Greenland and Iceland
<b>WVJENM604MAP</b>	Russian Lakes
<b>WVJENM608MAP</b>	Russia - Volgo Baltic Channel
<b>WVJEW225MAP</b>	France Inland
<b>WVJEW226MAP</b>	UK, Ireland and the Channel
<b>WVJEW227MAP</b>	North-West European Coasts
<b>WVJEW228MAP</b>	West European Coasts
<b>WVJINM201MAP</b>	Eastern India and Maldives
<b>WVJINM202MAP</b>	Maldives to Gulf of Martaban
<b>WVJINM203MAP</b>	Gulf of Martaban to Jakarta
<b>WVJMEM204MAP</b>	Red Sea to The Gulf and Seychelles Is.
<b>WVJPCM203MAP</b>	Carolinas, Kiribati, Marshall, Marianas
<b>WVJPCM204MAP</b>	South Pacific Islands
<b>WVJRSM202MAP</b>	Russian Federation - North West
<b>WVJRSM203MAP</b>	Russian Federation - North Central
<b>WVJRSM204MAP</b>	Russian Federation North East
<b>WVJRSM207MAP</b>	Hokkaido and Sakhalin Islands
<b>WVJRSM210MAP</b>	Russia - Volga
<b>WVJRSM212MAP</b>	Russia - Tver - Rybinsk
<b>WVJRSM213MAP</b>	Russia - Moskva - Dubna
<b>WVJRSM214MAP</b>	Russia - Rybinsk - Cheboksary
<b>WVJRSM215MAP</b>	Russia - Volgograd - Astrachan
<b>WVJRSM216MAP</b>	Russia - Kama River
<b>WVJRSM217MAP</b>	Russia - Ozero Baykal
<b>WVJRSM220MAP</b>	Russia - Moskow Channel and Oka River

# Install & License

## C-MAP by Jeppesen MM3D data

---

### Purchasing Chart Unlocks

---

C-MAP by Jeppesen chart unlocks can be purchased direct from Jeppesen by calling our dedicated sales staff. **When calling, please provide the NavNet 3D [SYSTEM ID](#).**

#### Jeppesen Contact

---

Phone: 800.424.2627 / 508.477.8010

Fax: 508.539.4381

E-mail: [us-orders@jeppesen.com](mailto:us-orders@jeppesen.com)

#### Jeppesen Account Managers

---

Roger Brudenell

[roger.brudenell@jeppesen.com](mailto:roger.brudenell@jeppesen.com)

(M) [774.521.6211](tel:774.521.6211)

Jim McQuade

[jim.mcquade@jeppesen.com](mailto:jim.mcquade@jeppesen.com)

(M) [774.521.6235](tel:774.521.6235)

Glenn Butt

[glenn.butt@jeppesen.com](mailto:glenn.butt@jeppesen.com)

(M) [709.746.3036](tel:709.746.3036)

- **Chart unlocks generate after July 25, 2011 will only work on data with a Major revision number of '2' and above. (see ['About Minor and Major Chart Versions'](#))**
- **Jeppesen is currently unable to process unlocks for MaxSea TimeZero or Nobeltec Trident.**
- **If you are an authorized Jeppesen dealer and interested in licenses for demonstration, please contact your [Account Manager](#) for more information.**

## System ID

---

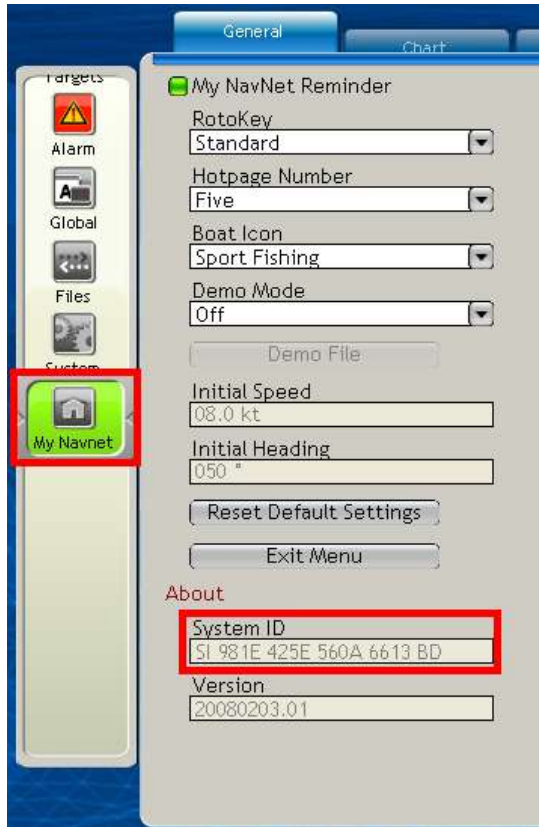
The System ID is the unique 20 digit number that identifies a NavNet 3D system. The System ID is required to purchase charts and must be provided when the chart is ordered.

### How to locate the SYSTEM ID

---

Press [MENU], turn the RotoKey (clockwise) to select the [MYNAVNET] menu page.

The System ID will be visible under the 'General' tab (see image below).



## Memory Slots - About

---

The internal memory of the NavNet 3D is divided into "Memory Slots". A memory slot may contain a minimum of 1 area of data (Raster, Vector, 3D, Sat Photos). *Each 'Memory Slot' equates to 2GB of data.*

The 'Data Catalog' menu will display how many Memory Slots are occupied and how many are remaining. Unused charts files can be deleted from the data catalogue to increase the units available Memory Slots, if necessary.

To view Memory Slot capacity, go to: **[MENU > CHART > DATA CATALOG]**

## Data List

---

The Data List shows all the data installed on the MFDs internal memory and gives basic information for each. *To view Data List, go to: [MENU > CHART > DATA CATALOG]*

<b><u>Reference</u></b>	MM3D file Name
<b><u>Type</u></b>	Describes data type (Raster, Vector, SAT & 3D)
<b><u>Status</u></b>	Indicates the status of the listed data file.

### Status Types

---

<b>'OK-INCLUDED'</b>	<i>Free Data</i>
<b>'OK-UNLOCKED'</b>	<i>Purchased data that was successfully unlocked.</i>
<b>'OK-LOCKED'</b>	<i>The data was correctly copied on the HDD, but no unlock code has been entered. Data will not be visible until unlocked.</i>
<b>'CORRUPTED'</b>	<i>The data cannot be read by the system. Push the RotoKey and select 'Repair'. If the area cannot be repaired, you will have to delete it from the Chart Catalog and re-install.</i>

## Downloading C-MAP by Jeppesen MM3D Data

---

1. Go to: [www.mapmedia.com](http://www.mapmedia.com) and click on 'Time Zero'.
2. Filter by selecting 'Map Type', 'Map Size' and 'Manufacturer' then click **Display Available Charts**. Search results will display list of available charts.
  - **Hover over chart title to show coverage area within MAP**
  - **Click on 'More Info' to display Presentation, Features and Compatibility.**
  - **Click on chart title to view available files**
3. Start download by clicking on DOWNLOAD next to selected chart file.



### **IMPORTANT! When downloading DO NOT modify file names or extensions**

- **Download times may vary, depending on file size and speed of internet connection. Do not be alarmed if the estimated download time exceeds 1 hour.**
- **Downloaded MM3D data must be 'unzipped' prior to loading to SD card (MFD8/12) or Flash Drive (MFD8B). Files on Furuno's MM3D HDD have already been unzipped.**
- **If using Furuno MM3D HDD, then there is no need to download data from [www.mapmedia.com](http://www.mapmedia.com). Instead, copy the files from the JEPPESEN folder.**

## **Transferring C-MAP by Jeppesen MM3D Data**

---

Single or Multiple chart files can be copied on the same SD Card or Flash Drive, provided the total file size does not exceed the memory capacity of the hardware used or the available [memory slots](#) within the MFD.

Files downloaded from [www.mapmedia.com](http://www.mapmedia.com) MUST be unzipped before copying to SD or Flash Drive. Files on Furuno's MM3D hard drive are already unzipped.

- **MFDB/12 with v2.05 software can only use 2GB SD Cards to transfer chart data.**
- **MFDB/12 with v2.07 software can use SD cards up to 32GB to transfer chart data.**
- **MFDBB can use USB Flash Drive to transfer chart data. (*Transferring data by USB Flash Drive on the MFDBB is faster than via SD card.*)**

## **STEP ONE – COPY**

1. Right Click MM3D file(s) to be copied from HDD and select COPY.



## **STEP TWO – PASTE**

1. With SD Card or USB Flash Drive inserted, click Start and select "My Computer".
2. Double-click on the Removable Disk. (*The name of your 'removable disk' may vary from example shown below*)



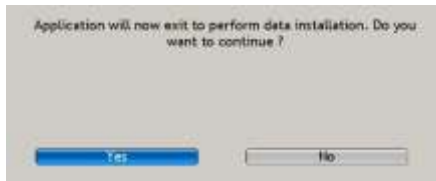
3. Paste the file(s) at the root directory of the SD-Card or Flash Drive (**CTRL-V** or **"Edit" > "Paste"**).
4. When the transfer is completed, remove the SD-Card or USB Flash Drive.

*Note: To safely remove the SD-Card or Flash Drive, return to the My Computer window, right-click on the 'Removable Disk', then click Eject.*

## Loading C-MAP by Jeppesen MM3D data to NavNet

C-MAP by Jeppesen MM3D chart data must be installed on the NavNet's internal memory before it can be accessed by the chart plotter. Repeat this process for all MFD's on the network. *Additionally, C-MAP by Jeppesen MM3D data files loaded to the NavNet will show as 'OK-LOCKED' until licensed.*

1. Insert the SD-Card (*containing 'unzipped' MM3D chart files*) into the upper slot of the MFD8/12 or insert USB Flash Drive into USB port, of the MFDBB.
2. Press the [MENU] key, select "Chart" page and then select "Data Catalog". Press the "Install Data" button.
3. Select "Yes" when the following prompt appears



4. The transfer will begin and a window displaying a progress bar will appear, as seen below.



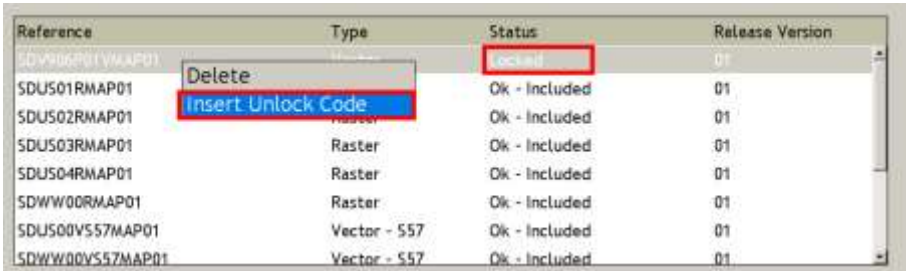
5. Repeat process for all MFDs on Network.

## Unlocking C-MAP by Jeppesen MM3D data

C-MAP by Jeppesen MM3D chart data is encrypted and unless an unlock code has been entered; the charts copied/pre-loaded to the NavNet3D will not be viewable until licensed.

For details on how to obtain unlock codes, see [Purchasing Chart Unlocks](#).

1. Press the **[MENU]** key, select **"Chart"** page and then select **"Data Catalog"**.
2. In the Data Catalog, select the area to be unlocked (*status* should be "Locked") and choose "Insert Unlock Code".



Reference	Type	Status	Release Version
SDV906P01YMAP01		locked	01
SDU501RMAP01		Ok - Included	01
SDU502RMAP01		Ok - Included	01
SDU503RMAP01	Raster	Ok - Included	01
SDU504RMAP01	Raster	Ok - Included	01
SDWW00RMAP01	Raster	Ok - Included	01
SDU500VS57MAP01	Vector - 557	Ok - Included	01
SDWW00VS57MAP01	Vector - 557	Ok - Included	01

3. Use the RotoKey to enter the Unlock Code:
  - **Rotate the RotoKey to select your character**
  - **Push the RotoKey to validate the current character and move to the next**
  - **Press the [CANCEL] key to move back and correct a previous character.**
4. If multiple data areas have been purchased, you must enter the Unlock Code for each corresponding area.

## Updating C-MAP by Jeppesen MM3D Data

---

C-MAP by Jeppesen MM3D data can be updated at 50% off retail.

### Upgrade Pricing

---

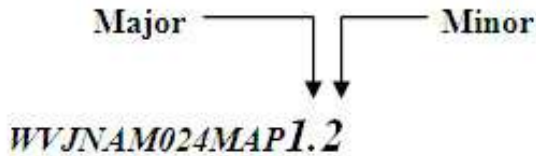
- \$150 WIDE UPGRADE
- \$300 MEGAWIDE UPGRADE

***Updates apply to charts who's 'MAJOR' revision number has changed. If the update was a 'Minor' revision, then updating is free.***

## About 'Minor' and 'Major' Chart Versions

---

All the MapMedia Chart Part Numbers end with a version number. The version contains a 'Major' revision number and a 'Minor' revision number.



Customers are entitled to download for free all the 'minor' chart updates that correspond to their 'major' revision number.

*Example: If a customer purchased WVJNAM024MAP1.1, he can update for free to WVJNAM024MAP1.2 (and all future WVJNAM024MAP1.X updates).*

When a chart update with a new MAJOR revision number is issued, the customer will have to pay for the upgrade.

- **Chart unlocks generated after July 25, 2011 will only work on data with a MAJOR revision number of '2' and above.**







Jeppesen • 133 Falmouth Road • Mashpee • MA 02649  
800.424.2627 • [us-customersupport@jeppesen.com](mailto:us-customersupport@jeppesen.com)