

JEPPESEN LIGHT MARINE DIVISION  
FOR ALL NORTH AMERICAN C-MAP  
RELATED QUESTIONS:

[1-800-424-2627](tel:1-800-424-2627)

[1-508-477-8010](tel:1-508-477-8010)

outside of North America:

[+49 6102 5070](tel:+49-6102-5070)

CONTACT TECHNICAL SUPPORT

M-F 9AM-7PM EST

[1-888-316-7275](tel:1-888-316-7275)

[1-303-328-4146](tel:1-303-328-4146)

[marine.support@jeppesen.com](mailto:marine.support@jeppesen.com)

CONTACT YOUR ACCOUNT  
MANAGER FOR FURTHER DETAILS  
ON ANY INFORMATION IN THIS  
BULLETIN.

Roger Brudenell

[roger.brudenell@jeppesen.com](mailto:roger.brudenell@jeppesen.com)

(M) [774.521.6211](tel:774-521-6211)

Jim McQuade

[jim.mcquade@jeppesen.com](mailto:jim.mcquade@jeppesen.com)

(M) [774.521.6235](tel:774-521-6235)

Justine Fluck

Dealer Support

[justine.fluck@jeppesen.com](mailto:justine.fluck@jeppesen.com)

[508.539.4302](tel:508-539-4302) (direct line)

CHECK OUT THE  
UPDATED [DEALER RESOURCES](#)  
PAGE

ON THE WEBSITE!  
DOWNLOAD PRICING,  
PROMOTIONS, CATALOGS, AND  
MORE....

Find us on  
FACEBOOK!



## Spring 2012 Release

The C-MAP by Jeppesen Spring 2012 update for the 4D, MAX, and NT+ chart libraries is now shipping and offers more port plans, more wrecks information, new high resolution bathymetry for the Great Lakes region and a few coverage area changes.

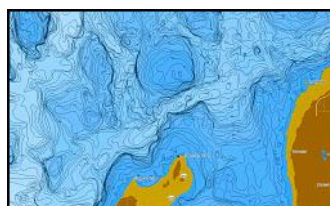
### 4D New Content - Wrecks and High Resolution Bathymetric

The Spring 2012 4D Sportfishing VAD (Value Added Data) now includes a new wrecks database with survey date, depth, name date sunk and other related information specific to a wreck. 4D VAD content for the Spring release also includes our first *high resolution bathymetry (HRB)*. Coverage area for this new VAD (wrecks and HRB) data includes the East Coast, Great Lakes and Gulf of Mexico.

Affected chart codes: NA-D022.07, NA-D026.07, NA-D023.07

### MAX & NT+

With Spring 2012, high resolution bathymetry data is available for the Great Lakes area. Chart codes include:



NA-M050.00 Lake Michigan

NA-M053.00 Lake Erie

NA-M054.00 Lake Ontario

The new high resolution bathymetry charts retail @ \$149.

Two hundred and twenty-eight (228) detailed marina plans have been added along with updated Port Plans, all on the West Coast with 203 in California and 25 in Washington. Affected chart codes: NA-D024.07, NA-M024.20, NA-M035.20, NA-C612.30, NA-C701.30.

### NT+ Coverage Changes - Please note

The chart code NA-C203 (Hudson Bay to Labrador) is obsolete and the area is now covered by two new codes, NA-C221 (Labrador and Ungava Bay) and NA-C222 (Hudson Bay and Hudson Strait).

Chart code NA-C701, formerly covering Olympia, WA to Port Neville, BC is now titled Olympia, WA to Lasqueti Island.

For more information on chart coverage for the Spring 2012 release, please visit the newly updated [C-MAP ONLINE Coverage](#) on the [jeppesen.com](http://jeppesen.com) website.

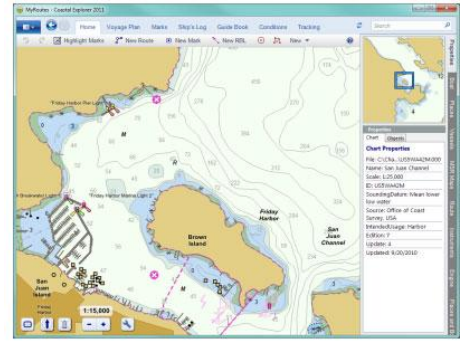
## New Partner Product

### C-MAP BY JEPPESEN and COASTAL EXPLORER



Coastal Explorer by Rose Point Navigation is now compatible with C-MAP by Jeppesen MAX charts. This is great news for cruisers, sport fishermen and professional mariners who want all the features and capabilities of MAX.

Coastal Explorer comes with planning features, route manipulation tools, and route obstacle detection, tide levels and tidal currents predictions, and weather downloads. Other features such as 'Guide Book' includes photos for exploring, and Ship's Log keeps track of voyages. The full-screen Cruise Mode replaces the standard Windows menus making it much easier to use while underway.



C-MAP MAX charts offer world-wide coverage with nav-aids, depth contours, and detailed harbor and ports charts. Specialty charts are also available including Fishing Contour Charts, Bahamas and Coastside Fishing Club.

If you are interested in a demo MAX chart for the in-store display of Coastal Explorer software, please contact your Account Manager or Dealer Support @ [800.424.2627](tel:800.424.2627) option #2.

## Ongoing Promotion

### Standard Horizon

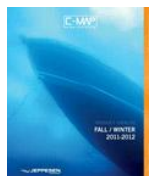
Available until April 30, your customers can receive a **\$100 Rebate** on a new MAX Wide chart card with the purchase of a Standard Horizon CP190/390/590 series plotter. For more details and a copy of the promotional flyer, click [here](#).

And don't forget the [Dealer Rebate Envelope](#).

For your customers who want to update their existing chart card, consider the Dealer Rebate Program. Sell your customer a new, updated chart card and the customer returns their outdated chart card in the rebate envelope, along with a proof of purchase, to our North America sales office. The customer receives a Visa Gift card rebate from Jeppesen -- \$100 if they purchase a Mega Wide, \$50 if they purchase a Wide.

## Marketing Resources

The dedicated [DEALER RESOURCES](#) section on our Jeppesen website offers a number of new and updated marketing resources that are available for your sales and marketing needs.



### Full Product Catalog Fall/Winter 2011-2012

For you and your customer's easy reference, we offer one full product catalog outlining all C-MAP chart products and accessories. Available in both print copy and the new [Flipbook version](#) for online viewing. Also available is a new Countertop Catalog display which can be ordered using the updated [Sales Merchandise Form](#).



### C-MAP by Jeppesen MM3D Chart Guide

The [C-MAP by Jeppesen MM3D Chart Guide](#) offers an easy reference for the selection and licensing of C-MAP by Jeppesen charts on the Furuno NavNet 3D units.

You can complement the information in the guide with a copy of the [MM3D Benefits Flyer](#).

## Gentle Reminders...

### Dealer Stock Update

With each chart update release, we offer dealers the opportunity to return older inventory (within one year of the release date) and receive a 'dealer stock update' at no extra charge. If you have outdated inventory, please contact your Account Manager for a return authorization number and details on the exchange program.

### UPS Tracking

We can email UPS tracking information for your orders to a specified address. When placing an order, please remember to include the preferred email address for tracking information on the order paperwork.

### Orders

Don't forget that DEALER orders can be emailed to [us-orders@jepesen.com](mailto:us-orders@jepesen.com) and you will receive an order confirmation with estimated shipping time. You can also send product and pricing inquiries to this email -- it is there for you.

Please remember that a \$10 drop-ship fee is added as a handling charge for orders that do not ship directly to your dealer location.

**C-MAP by JEPPESEN BULLETIN 2012©**