

# C-MAP 4D

Your all-in-one charting solution

## QUICK START GUIDE

**FURUNO**  
GP1670F  
GP1870F



# CONTENTS

<b>INTRODUCTION</b> .....	3
Media.....	3
Coverage and Pricing.....	3
<b>C-MAP 4D CONTENT AND FEATURES</b> .....	4
3D View.....	4
High-Resolution Satellite Imagery.....	4
Dynamic Raster Charts.....	4
Easy Routing.....	4
<b>VALUE ADDED DATA</b> .....	5
High-Resolution Bathymetry.....	5
Sport Fishing Data.....	5
<b>PLOTTER CONTROL OPTIONS</b> .....	6
Customize Chart Presentation.....	7
<b>MAKE THE MOST OF 4D</b> .....	8
3D-View.....	8
High-Resolution Satellite Imagery.....	9
Dynamic Raster Charts.....	10
Easy Routing.....	11
<b>VALUE ADDED DATA</b> .....	13
Unlock Value Added Data.....	14

# INTRODUCTION

---

C-MAP 4D provides an all-in-one charting solution and includes a complete range of navigational features and technology. With C-MAP 4D, you get the most up-to-date vector data plus Dynamic Raster Charts, Satellite Imagery, 3D-View and Easy Routing. C-MAP 4D also delivers continuous updates that can be unlocked online, providing another way to customize navigation data to enhance your boating experience.

## Media

---

All C-MAP 4D cards are Secure Digital (SD) format.

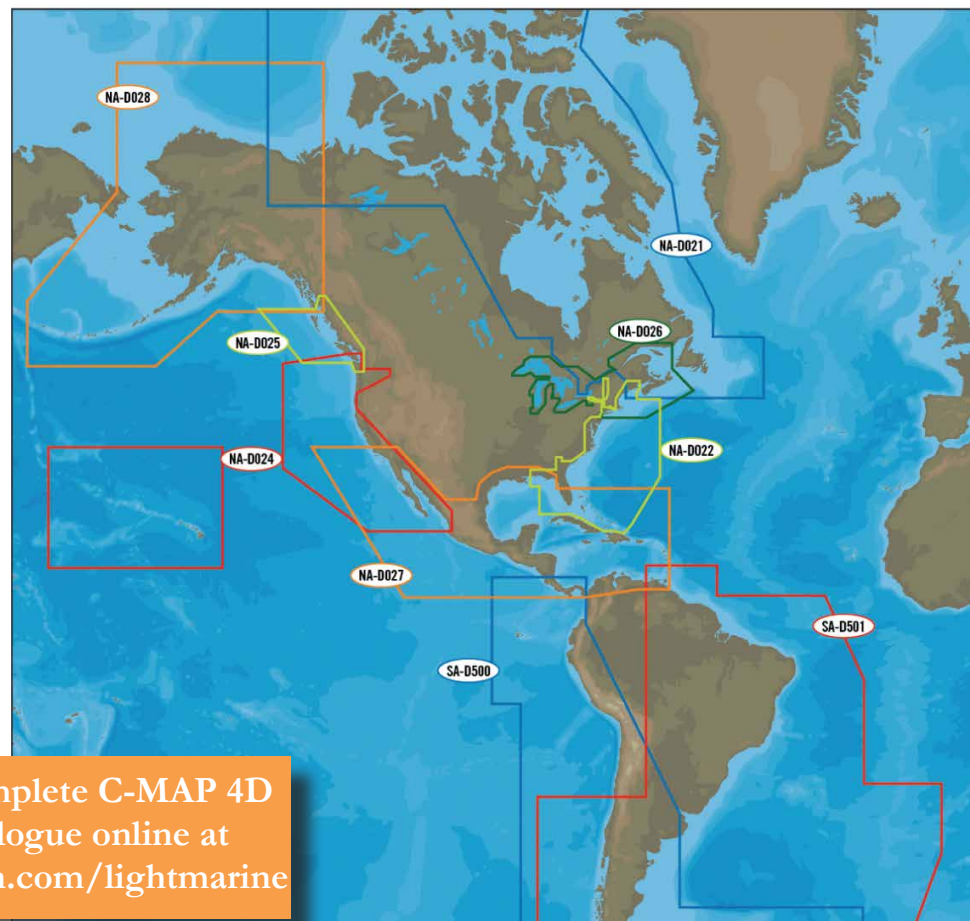
## Coverage and Pricing

---

C-MAP 4D is available in two price regions:

**4D WIDE** - Expansive coverage at \$299

**4D LOCAL** - Regional coverage at \$199



View the complete C-MAP 4D chart catalogue online at [www.jeppesen.com/lightmarine](http://www.jeppesen.com/lightmarine)



# C-MAP 4D CONTENT AND FEATURES

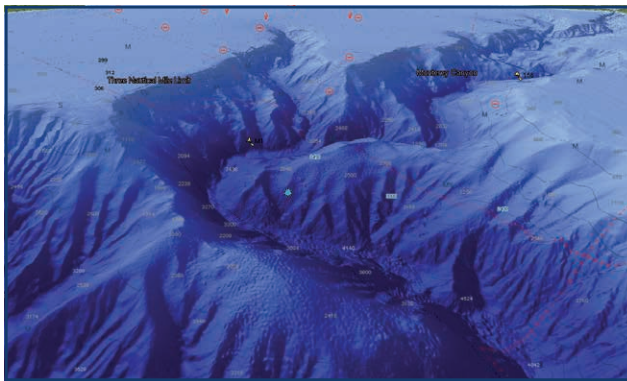
---

C-MAP 4D provides an all-in-one charting solution and includes a complete range of navigational features and technology. With C-MAP 4D, you get the most up-to-date vector data plus 3D-View, Satellite Imagery, Easy Routing and Dynamic Raster Charts.

## 3D-View

---

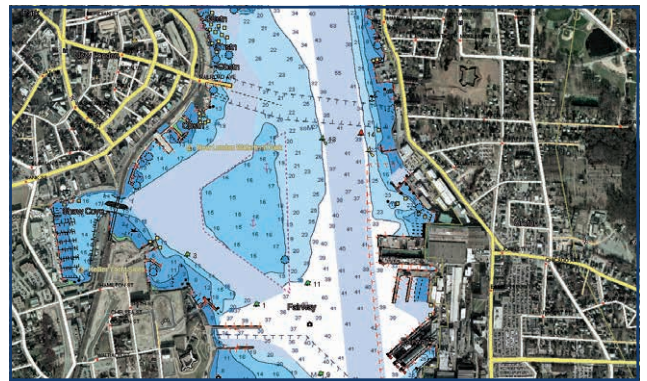
3D View uses advanced digital terrain modeling on land and sea resulting in an exceptional presentation of C-MAP cartography.



## Satellite Imagery

---

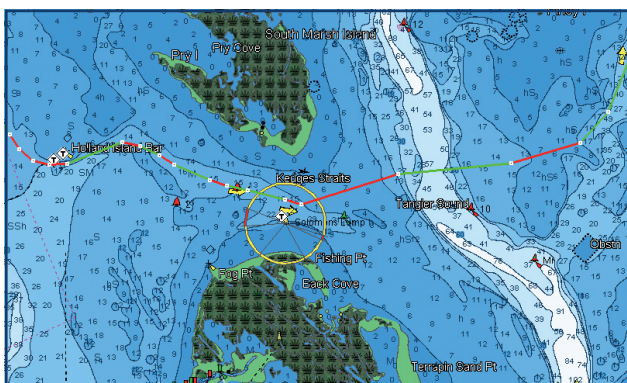
See the real world on-screen using High-Resolution Satellite Imagery.



## Easy Routing

---

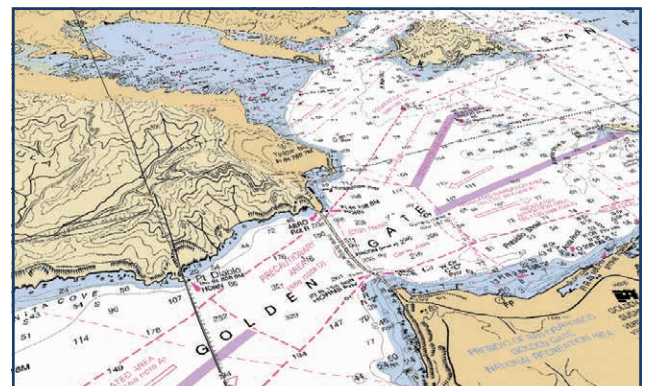
Automatically create routes from points A to B. The calculated route offers guidance within each route leg, thereby avoiding obstacles, shallow waters and dangerous areas.



## Dynamic Raster Charts

---

Only within C-MAP 4D do you have the ability to overlay official nautical paper charts on top of C-MAP 4D vector data.



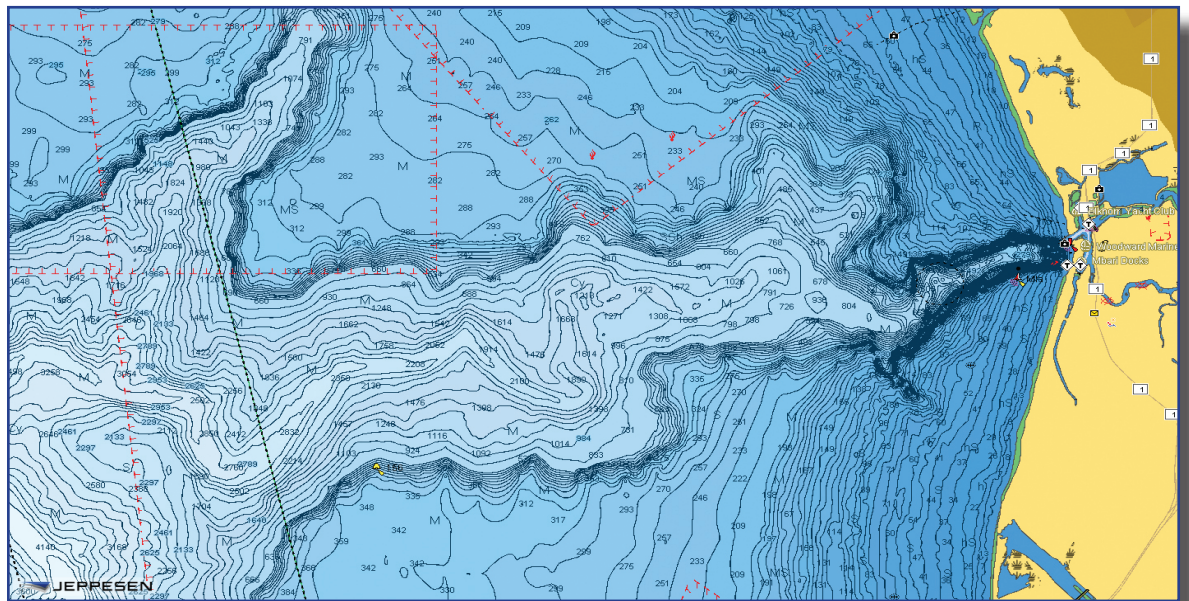


# VALUE ADDED DATA

Further expand your 4D experience with High-Resolution Bathymetric and Sport Fishing Data that can be easily unlocked through Jeppesen's online web store.

## High-Resolution Bathymetric Charts

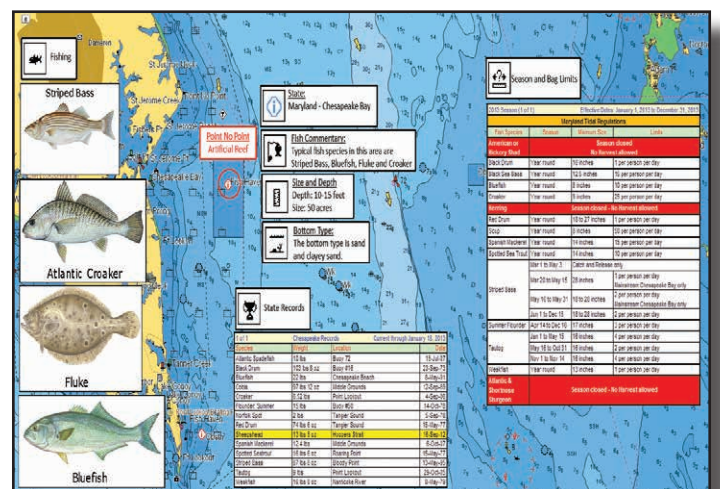
High-Resolution Bathymetric charts are designed specifically for fishing and add a specialized layer of bathymetric data that offers amazing depth and contour detail of ledges and canyons, giving you the most detailed profile of the ocean bottom.



## Sport Fishing Data

Sport Fishing Data is an extensive collection of private and public sport fishing information from valued sources including NOAA and Coast Side Fishing Club. Each sport fishing hot spot includes:

- Artificial Reefs
- Wrecks
- Hangs
- Fish ID images
- Obstructions
- Up-to-date state rules, records and regulations.



# PLOTTER CONTROL OPTIONS

The control keys on the Furuno GP1670F and GP1870F which contain two labels have dual functions. The top label is the main function and can be accessed with a **SHORT PUSH**. The bottom label is the secondary function and can be accessed with a **LONG PUSH**.



A	HOME/CTRL	Short Push	Displays home page.
		Long Push	Switches active display in combination modes.
B	ENT		Confirms Operation. Access info/easy routing menu.
C	POINTS/GO TO	Short Push	Places point at cursor.
		Long Push	Sets cursor position as destination.
D	ESC/MENU	Short Push	Escape from current operation.
		Long Push	Opens the menu.
E	CURSOR		Move cursor and pan. Tilt/Rotate - 3D manual mode.
F	EVENT/MOB	Short Push	Places point at current position.
		Long Push	Put MOB at current position.
G	ROTOKEY	Short Push	Displays base menu.
		Long Push	Displays full menu. - Zoom/Enter.

# CUSTOMIZE CHART PRESENTATION



**A** Access **MAP** to change icon size, adjust nav-aid presentation, select chart languages, predict currents and change the chart display.

1. **ESC/MENU** [long push].
2. Select **MAP**.

**B** Select **CHART DISPLAY** to adjust chart overlays and transparencies for 2D, 3D, Vector and Satellite.

1. **ESC/MENU** [long push].
2. Select **MAP** then **CHART DISPLAY** and choose from:

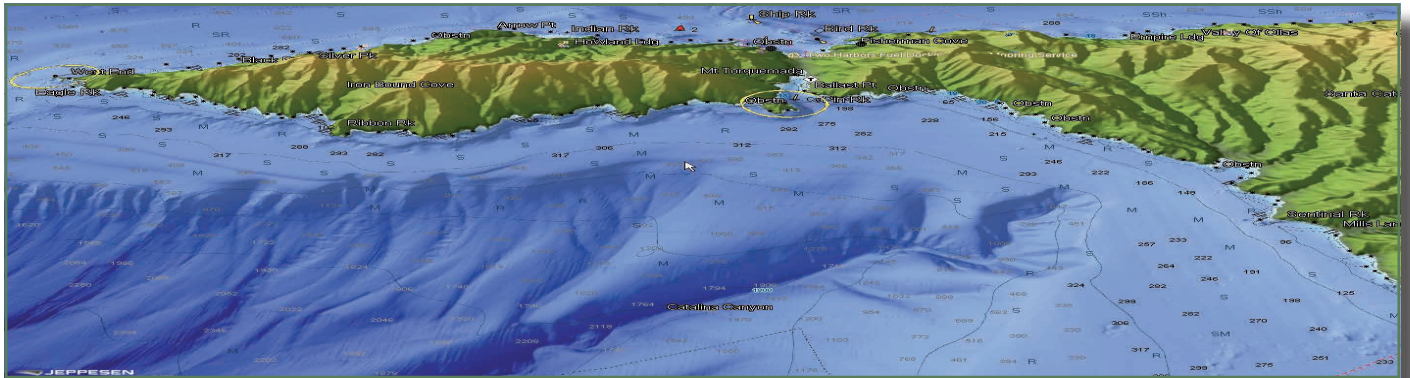
<b>PLOTTER WINDOW</b>	Select active display location for the 2-way split screen. Default setting displays on the left half.
<b>DISPLAY MODE</b>	Select the chart display mode, among 2D, 2D Perspective and 3D.
<b>OVERLAY</b>	Select the type of overlay to use: Vector, Satellite, Raster and Chart Shading (not available in the 3D display).
<b>OVERLAY MODE</b>	Select where to display the overlay: On Land, On Sea or On All (available in 2D and 2D Perspective modes when [Chart Shading] is selected).
<b>TRANSPARENCY</b>	Set the level of transparency for satellite photos. The higher the number the greater the degree of transparency.
<b>3D EXAGGERATION FACTOR</b>	To enhance the view of topographical features, set the level of 3D exaggeration from levels 1 – 5. The higher the number the greater the degree of exaggeration.



# MAKE THE MOST OF 4D

Easily navigate the features of C-MAP 4D using these quick steps.

## 3D-VIEW




3D is viewable in Vector, Raster or Satellite Imagery chart layers.

### Enable 3D-View

1. **ROTOKEY** [short push].
2. Select **2D/3D MODE**.
3. Under **3D**, select: Vector, Satellite or Raster.

### Tilt and Rotate 3D-View

1. **ROTOKEY** [long push].
2. Select **MODE** then **MANUAL**.
3. Hold in the **ENT** key to enable adjustments.
4. Adjustments are enabled when the **3D icon**  appears on-screen.

### Exaggerate 3D-View

Exaggerate chart objects and underwater features.

1. **ESC/MENU** [long push].
2. Go to **MAP** then **CHART DISPLAY**.
3. Select **3D EXAGGERATION** and choose between 5 levels. *5 offers the highest exaggeration.*



# HIGH-RESOLUTION SATELLITE IMAGERY

---



Overlay High-Resolution Satellite Imagery onto the most accurate vector data. High-Resolution Satellite Imagery is viewable in 2D and 3D modes.

## Overlay Satellite Imagery

1. **ROTOKEY** [short push].
2. Select **2D/3D MODE**.
3. Choose from:
  - 2D
  - 2D Perspective (Vector/Satellite)
  - 3D (Satellite)

## Satellite Transparency

Adjust the transparency for High-Resolution Satellite Images.

1. **ESC/MENU** [long push].
2. Go to **MAP** then **CHART DISPLAY**.
3. Select **TRANSPARENCY** and choose between 0-100.  
*100 offers the highest level of transparency.*

# DYNAMIC RASTER CHARTS

---



The Raster Chart overlay found within 4D provides an additional navigational reference source while allowing access to vector chart detail, including: nav aids info, wrecks, obstructions, etc. Viewable in 2D and 3D modes.

## Overlay Raster Charts

---

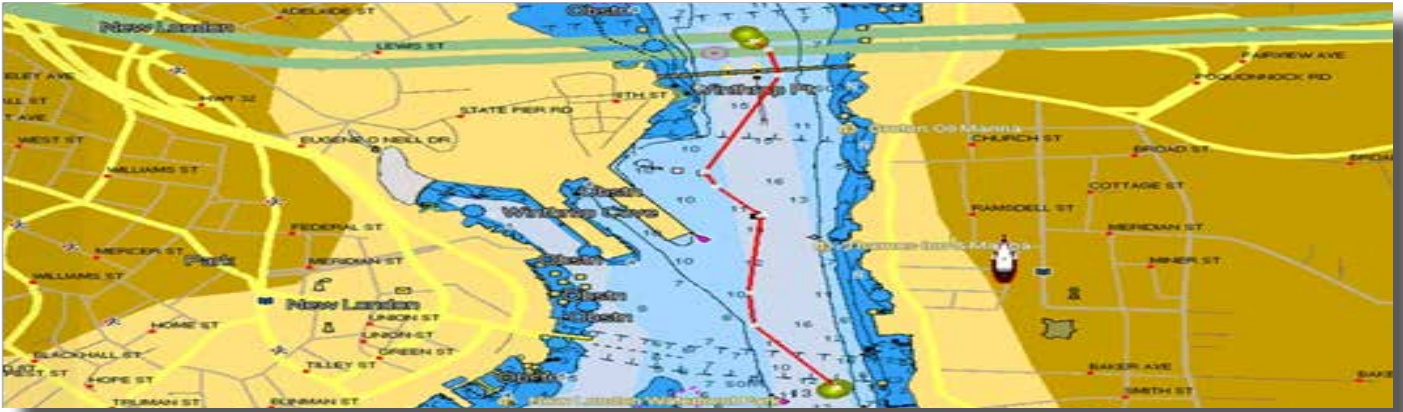
1. **ROTOKEY** [short push].
2. Select **2D/3D MODE**.
3. Choose Raster from:
  - 2D
  - 2D Perspective
  - 3D

## Raster Transparency

---

1. **ESC/MENU** [long push].
2. Go to **MAP** then **CHART DISPLAY**.
3. Select **TRANSPARENCY** and choose between 0-100.  
*100 offering the highest level of transparency.*

# EASY ROUTING



Easy Routing calculates the shortest safe route from start to end points.

The proposed route will display a level of safety for each leg, thereby avoiding obstacles such as: Nav-Aids, Rocks, Obstruction, Shallow waters, Dangerous Areas and Bridges. **IMPORTANT:** The suggested route must be checked, edited and approved before using for navigational purposes.

## Setup Easy Routing

1. **ESC/MENU** [long push].
2. Select **PLOTTER** then **EASY ROUTING**.
3. Set the following safe values:

Safe Value	Description
Safe Depth	Vessel's Draft. 3.3 – 65.6 (ft).
Safe Height	Vessel's Minimum Height Clearance. 6.6 – 164.1 (ft).
Safe Corridor	Minimum width of path. 0.0011 – 0.0099 (nm).
Time Out	Maximum time allowed for route calculation. 1-20 (min).
Safe Margin	[ON] Honors the minimum distance between a dangerous/non-navigable area and the vessel.
Respect Draft	[ON] Disregards the depths shallower than the Safe Depth setting. [OFF] Respects the Safe Depth setting.



# CALCULATE EASY ROUTE

---

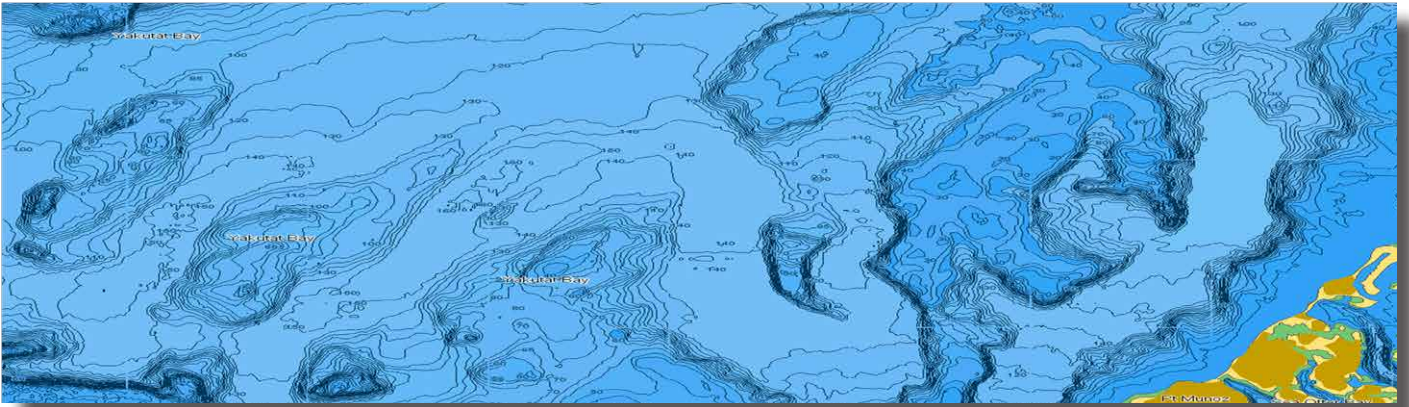
1. Place cursor on start point and press **ENT**.
2. Select **EASY ROUTING** then **START**.
3. Move cursor to end point and press **ENT**.
4. Select **EASY ROUTING** then **DESTINATION**.
5. Select **ENT**, **EASY ROUTING** then **CALCULATE**.
6. Choose **OK** to finish or **DETAILS** to view results.
7. Select **ENT** to save route or **ESC/MENU** to exit without saving.

Note: Route must be saved before changes can be made. Start and end points stay on screen until deleted (for routes that are not saved and/or completed.)

Route Leg	Description
Red	Condition is unsafe for navigation, crossing dangerous areas or objects.
Yellow	Requires maximum attention. Leg crosses potentially dangerous areas/objects.
Green	No Hazards detected.
Gray	Start/End point moved to safer area.

# VALUE ADDED DATA

---



High-Resolution Bathymetric and Sport Fishing Value Added Data (VAD) provides additional enhancements tailored to your changing boating needs. Using your pre-programmed C-MAP 4D card, VAD can easily be unlocked and updated online.

## Managing Value Added Data

---

Use the following steps to turn Value Added Data ON/OFF or customize to display individual objects.

1. Press **ROTOKEY** [long push]
2. Scroll to **VAD** and choose between the following for each category:

DISPLAY – select On/Off or Custom.

CUSTOMIZE – select On/Off for each object.

## VAD Categories

---

Value Added Data is divided into ‘Standard VAD’ and ‘Paid VAD’ categories. Standard VADs are included at no additional cost and require no unlock. Paid VADs are visible after a purchased unlock.

### **STANDARD VAD**

Roads, Lane Elevations, Points of Interest, Tidal Stations, Port/Marina and Multimedia Content.

### **PAID VAD**

High Resolution Bathymetric data and Sport Fishing data that includes: caution areas, fish havens, fishing grounds, precautionary areas, wrecks, restricted areas and ORAs

# UNLOCK VALUE ADDED DATA

---

1. Go to [www.jeppesen.com](http://www.jeppesen.com) and click on **ACCOUNT/LOGIN** then select **MARINE ACCOUNT**.
2. Enter User Name and Password or select Register, for first time users.
3. Insert the C-MAP 4D SD-card into an SD-card reader and go to **YOUR MAPS**. On first use, you will be prompted to download and install MAPS MANAGER.
4. Select **ADD SD CONTENT**.
5. Select **BUY** next to the available content to be purchased then choose from:


INFO - view cartridge details.

VALUE ADDED DATA - unlock 4D Value Added Data.

CONTENT - upgrade to include all 4D features.

UPDATE - update 4D content from old to newer version.

UPGRADE - upgrade 4D from Local to Wide.

6. Click  to add selected purchase to the shopping cart.
7. Go to **SHOPPING CART**, click **CHECK OUT** then **PAY ONLINE**. Enter payment details then confirm. The message *'Transaction completed successfully'* will be shown.
8. Return to **YOUR MAPS** and click on **APPLY TO SD** to launch Maps Manager.
9. Choose **UNLOCK**. The C-MAP 4D chart content will move to **ON THE DEVICE** and show 'ready to install on SD'.
10. Select **PROGRAM-SD** to start unlocking. The chart will be displayed as **READY** once the purchased C-MAP 4D content has been successfully unlocked.







133 FALMOUTH ROAD • MASHPEE • MA 02649  
800.424.2627 • US-CUSTOMERSUPPORT@JEPPESEN.COM