

Jeppesen Handheld Training Series



This series provides advanced, self-paced, digital learning programs that train nearly all operational aspects of your handheld GPS unit. The programs use a two-step process to help you learn procedures in a linear, scenario-based fashion. It's the easy, proven way to gain confidence with all that your handheld GPS has to offer.

Garmin GPSMAP 196, 296, 396, 496 and 696.

- Scenario-based, guided simulation
- Hands-on interactive learning
- Realistic GPS emulator (virtual handheld devices)
- Detailed, narrated demonstrations
- Over 34 topics taught, including: startup, pre-departure, departure, enroute, arrival and quick tips
- On-screen help and feedback systems
- MapSource downloadable tutorials
- Includes link to Garmin Pilot's Guide and Owner's Manual

Minimum Technical Requirements

Jeppesen programs are distributed on Windows® compatible CD-ROM or DVD-ROM.

- Microsoft® Windows 2000®, Windows XP® and Windows Vista®
- 175 MB of available disk space
- 256 MB or more of available RAM
- 256 color monitor capable of 800x600 resolution
- Sound Card



For more information, please contact us:
+1 800.621.5377 (U.S. Only) or +1 303.328.4274 email: captain@jeppesen.com

jeppesen.com/avionicstraining

To see prices and order online, please visit jeppdirect.com

Jeppesen Avionics Knowledge Library

Advanced, online and computer-based training for panel mount and handheld GPS systems



Jeppesen Avionics Training product features



Demo mode

The demo mode plays an animated, narrated movie to illustrate topics using a scenario. Controls are provided to pause, play, rewind or jump to any step of the movie. The demo mode is available for all topics, and the average playback time and number of steps in the lesson are indicated in the control bar.



Training mode

In the training mode, prompts and on-screen text guide you through the correct actions for the same scenario and task you viewed in the demo mode. A visual feedback system will advise you of any incorrect actions and you can practice the operation again. You can advance or go back to any step by using the control bar.

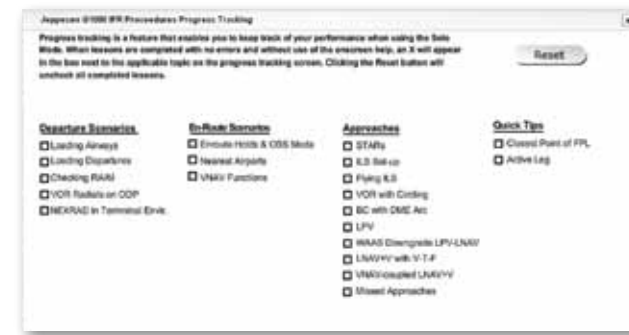


Solo mode

The solo mode reinforces your knowledge because you complete the task without the prompting found in the training mode. An optional feedback system alerts you of any incorrect actions and a help system is available. The solo mode enables you to assess your ability to complete the task shown in the demo mode and practiced in the training mode.

Progress tracking

The progress tracking function monitors your performance in the solo mode. For each applicable topic, an X will appear if you have completed all steps (in sequence) with no more than two errors and without using the on-screen prompts. You can view your progress by clicking on the progress tracking button on the home page. This function can be reset at any time.



Jeppesen Panel Mount Training Series

These courses are state-of-the-art, online and computer-based training programs for Garmin™ panel mount GPS systems, which utilize a proven three-step method to teach procedures. All programs are self paced, digital learning solutions that not only teach the basics, but also provide comprehensive training on almost all operational aspects of your GPS, including IFR procedures. Developed with input from Garmin, the FAA and top CFIs, these programs help maintain your operational knowledge and help increase your efficiency and competency with important procedures during critical phases of flight.



Jeppesen Garmin G1000 Training—Core and VFR Procedures

Teaches you the skills required to master G1000 basics. Over 60 topics in eight categories emulate the phases of flight and include:

- Abnormal and emergency operations
- GFC700 and KAP140 autopilots
- Quick tips

This training is available as an **online course** or on CD-ROM.

Jeppesen Garmin G1000 Training—IFR Procedures

An advanced, comprehensive program that covers everything you need to fly the G1000 in IFR conditions. Over 40 topics taught in six categories emulating the phases of flight, including using NEXRAD in the terminal environment, common errors and the following:

- Calling up and flying instrument procedures
- New WAAS-enabled approaches such as LNAV, LNAV/VNAV and LPV
- Departures and arrivals
- Course reversals
- Holding patterns
- Executing missed approaches

This training is available as an **online course** or on CD-ROM.

Jeppesen Garmin G1000 Training—VFR and IFR Bundle

Get more value with our bundle pricing. Includes VFR and IFR G1000 courses, available as a **Mobile App**, as an **online course** or CD-ROM.

Jeppesen Garmin GNS 530/430 Training—VFR and Core IFR Procedures

Provides overall comprehensive training on most operational aspects of the GNS 530 and 430 GPS, including basic IFR procedures. It is also a great refresher tool for recurrent training and helps minimize the “highly perishable skills syndrome” that occurs from infrequent use of your Garmin navigator. Discover the safe way to understand your GNS 530/430 compared to heads-down, in-cockpit training.

Jeppesen Garmin GNS 530/430 Training—Advanced IFR Procedures

This training contains over 25 topics that complement and build on skills learned in VFR and Core IFR Procedures, and includes valuable shortcuts and a virtual flight. Expand your comprehension of these sophisticated operations:

- Approaches
- Missed approach procedures
- OBS mode changes
- Undefined DPs
- Amended routings
- Intercepting radials
- Unpublished holds
- Changes to transitions

Jeppesen Garmin GNS 530/430 Training—WAAS Procedures

Become proficient with WAAS operations at your computer desktop, not in the cockpit. This training teaches you how to leverage all the new WAAS functionality, and confidently fly WAAS approaches. You'll learn about fundamental WAAS concepts and train to use the upgraded features and functions of your GNS 530W/430W. Includes:

- WAAS overview
- WAAS approaches
- Enhanced operational functions
- Modes and behaviors
- New approach annunciations
- LNAV, LNAV/VNAV and LPV approaches
- Updated holding pattern operation
- New/different OBS mode behaviors
- Parallel track and dead reckoning functions
- Revised terrain database capability

Jeppesen Garmin GNS 530/430 Training Bundle

Get more value with our bundle pricing. Includes VFR and Core IFR Procedures, and Advanced IFR Procedures.

Jeppesen Garmin GNS 530/430 Advanced Training Bundle

Get more value with our bundle pricing. Includes Advanced IFR Procedures and WAAS Procedures.

Jeppesen Garmin GNS 530/430 Complete Training Bundle

Get more value with our bundle pricing. Includes all three of the GNS 530/430 training courses.