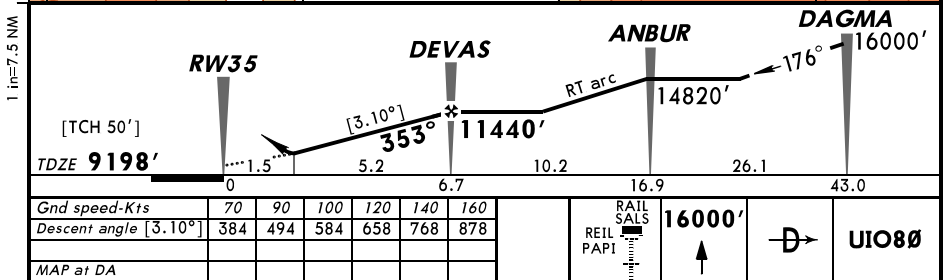
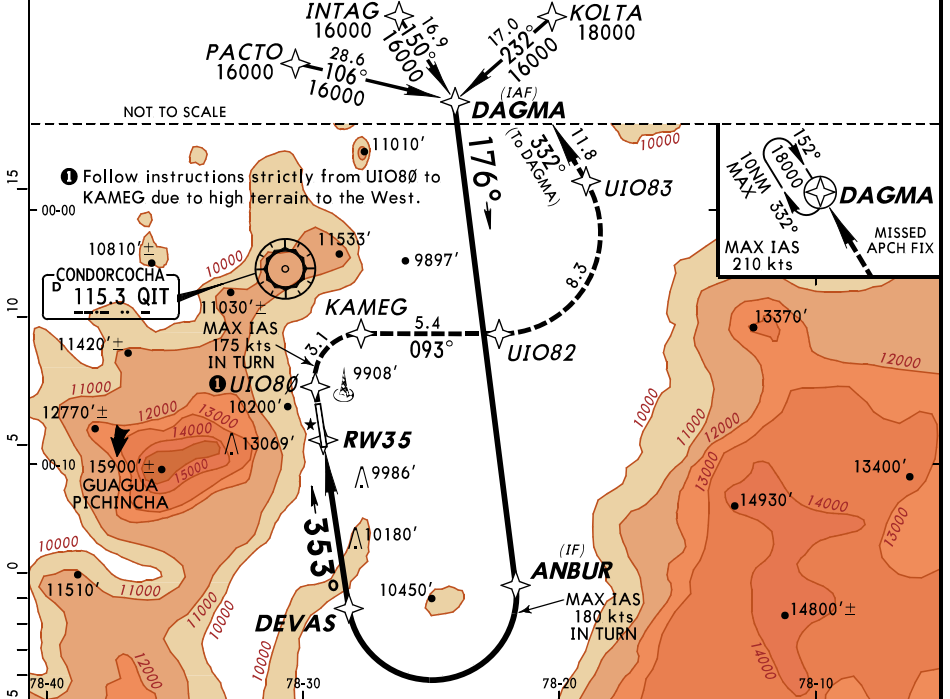


BRIEFING STRIP™

ATIS 114.8 115.3		QUITO Approach (R) 119.7 121.2		QUITO Tower 118.1	Ground 121.9		
RNAV	Final ApcH Crs 353°	Minimum Alt DEVAS 11440' (2242')	RNP 0.15 DA(H) 9740' (542')	Apt Elev 9228'	TDZE 9198'		
MISSED APCH: Climb to 16000' following the RNAV missed approach to DAGMA and hold. Minimum climb gradient of 170' per NM until 10,700' is required.							
Gnd speed-Kts		75	100	150		200	250
Mim climb 170'/NM		213	283	425	567	708	850
					MSA QIT VOR		

Alt Set: hPa TDZ Elev: 294 hPa Trans level: FL 180 Trans alt: 18000'
1. SPECIAL AIRCRAFT & AIRCREW AUTHORIZATION REQUIRED. 2. RF and GPS capability required.
 3. DME/DME not authorized. 4. For uncompensated Baro-VNAV systems, procedure not authorized below -15°C (5°F). 5. VGS1 and descent angles not coincident. 6. After RNP alert, follow the Missed Apch instructions. 7. Pilot controlled lighting: Rwy 35 RAIL, Rwy 17/35 REIL on 122.8; Rwy 17 PAPI-L on 123.0.



STRAIGHT-IN LANDING RWY 35							
Missed apch climb gradient mim 170'/NM							
RNP 0.15							
DA(H) 9740' (542')							
A	NA						
B							
C	3.0 km						
D							