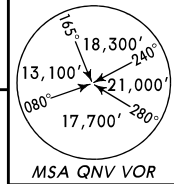
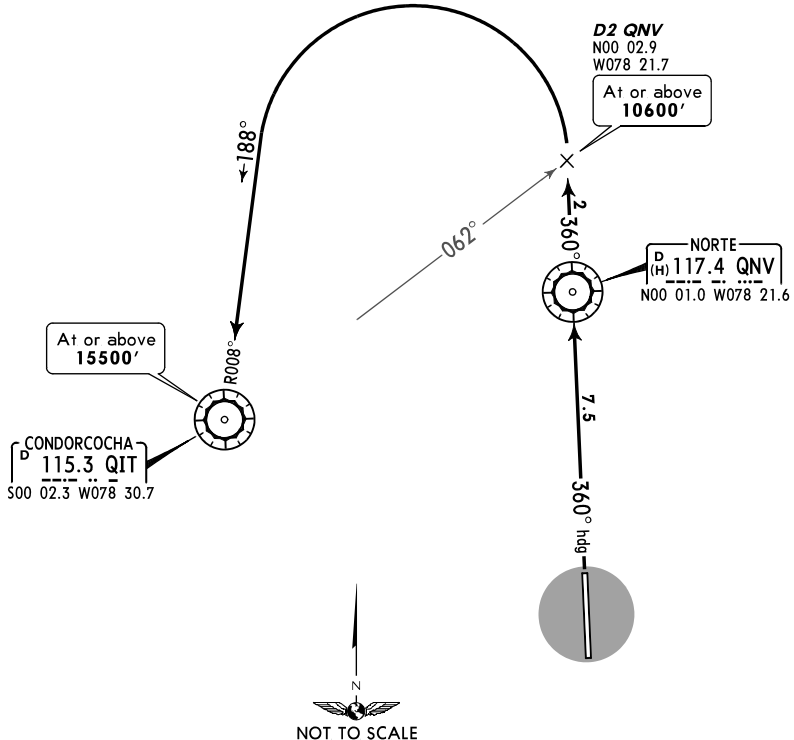


Apt Elev  
7910'

Trans level: FL180 Trans alt: 18000'



DEPARTURE 1  
[DEP 1]  
(RWY 36)



This SID requires take-off minimums:  
Ceiling 100m, Visibility 1000m and a minimum  
climb gradient of 5.0% (304' per NM).

Gnd speed-KT	75	100	150	200	250	300
5.0% V/V (fpm)	380	506	760	1013	1266	1519

Altitude at distance from QNV

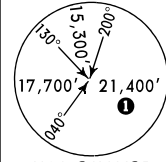
QNV DME	7.5	7	6	5	4	3	2	1	0
ALTITUDE	7792'	8096'	8400'	8704'	9008'	9312'	9616'	9920'	10224'

INITIAL CLIMB

After take-off **MAINTAIN** runway heading to QNV, then climb on course 360° (QNV R-360) to D2 QNV (QIT R-062), turn **LEFT** to intercept QIT R-008 (188° course) to QIT, or proceed according to ATC instructions.

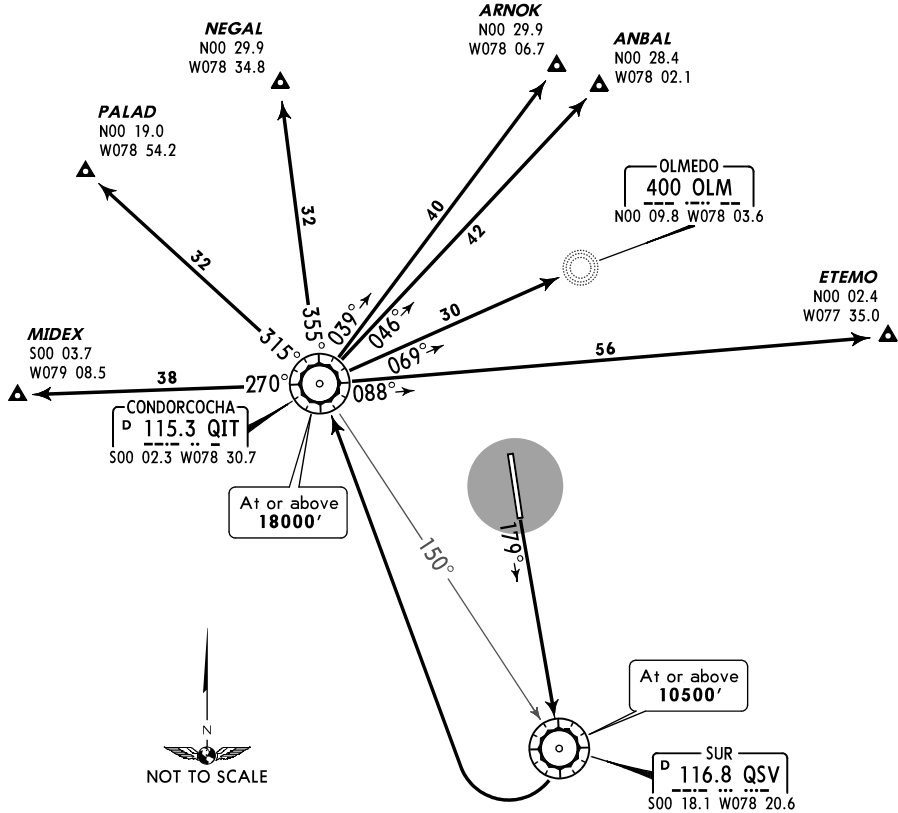
Apt Elev  
7910'

Trans level: FL180 Trans alt: 18000'



MSA QSV VOR  
1 16,600'  
within 10 NM

DEPARTURE 2  
[DEP2]  
(RWY 18)



This SID requires take-off minimums:  
Ceiling 100m, Visibility 1000m and a minimum  
climb gradient of 4.5% (273' per NM).

Direct distance from Mariscal Sucre  
De La Ciudad De Quito Intl to:  
QSV 11 NM

Gnd speed-KT	75	100	150	200	250	300
4.5% V/V (fpm)	342	456	684	911	1139	1367

Altitude at distance from QSV

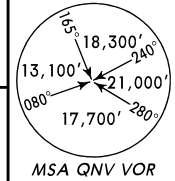
QSV DME	9	8	7	6	5	4	3	2	1	0
ALTITUDE	8063'	8338'	9609'	9882'	9155'	9428'	9701'	9974'	10247'	10520'

INITIAL CLIMB

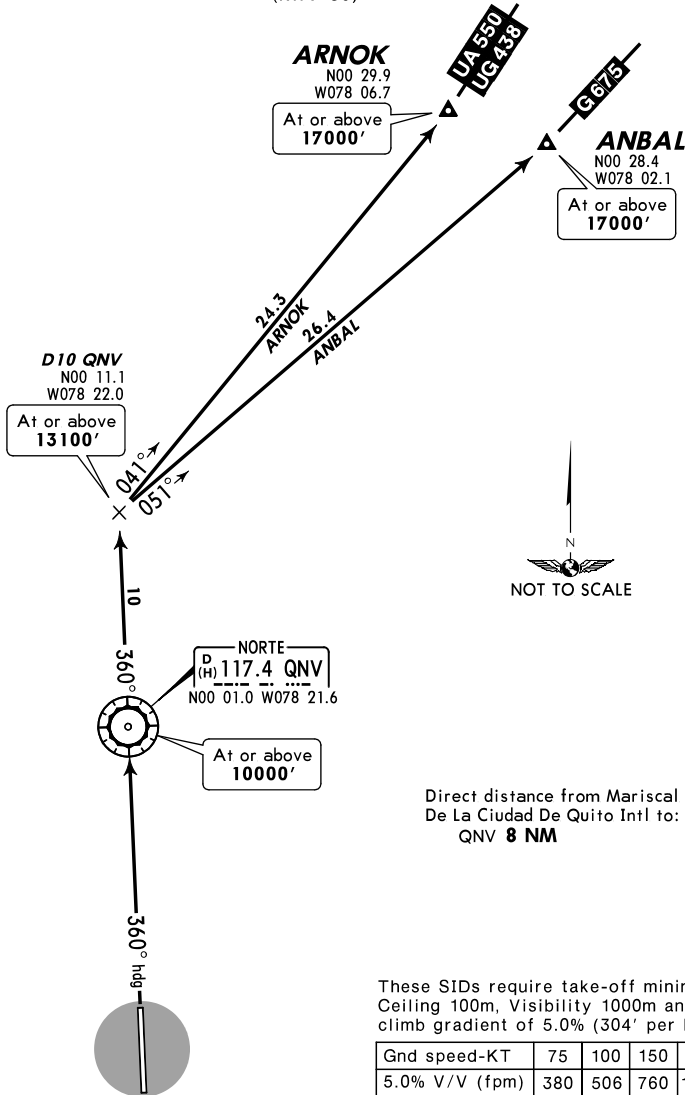
After take-off, direct to QSV. Turn RIGHT to QIT climbing to 18000' or proceed according to ATC instructions.

Apt Elev  
7910'

Trans level: FL180 Trans alt: 18000'



**ANBAL [ANBAL], ARNOK [ARNOK]  
DEPARTURES**  
(RWY 36)



Direct distance from Mariscal Sucre  
De La Ciudad De Quito Intl to:  
QNV **8 NM**

These SIDs require take-off minimums:  
Ceiling 100m, Visibility 1000m and a minimum  
climb gradient of 5.0% (304' per NM) to D10 QNV.

Gnd speed-KT	75	100	150	200	250	300
5.0% V/V (fpm)	380	506	760	1013	1266	1519

Altitude at distance from QNV

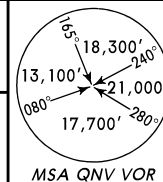
QNV DME	7.5	7	6	5	4	3	2	1	0
ALTITUDE	7792'	7940'	8250'	8550'	8860'	9160'	9460'	9770'	10070'

**INITIAL CLIMB**

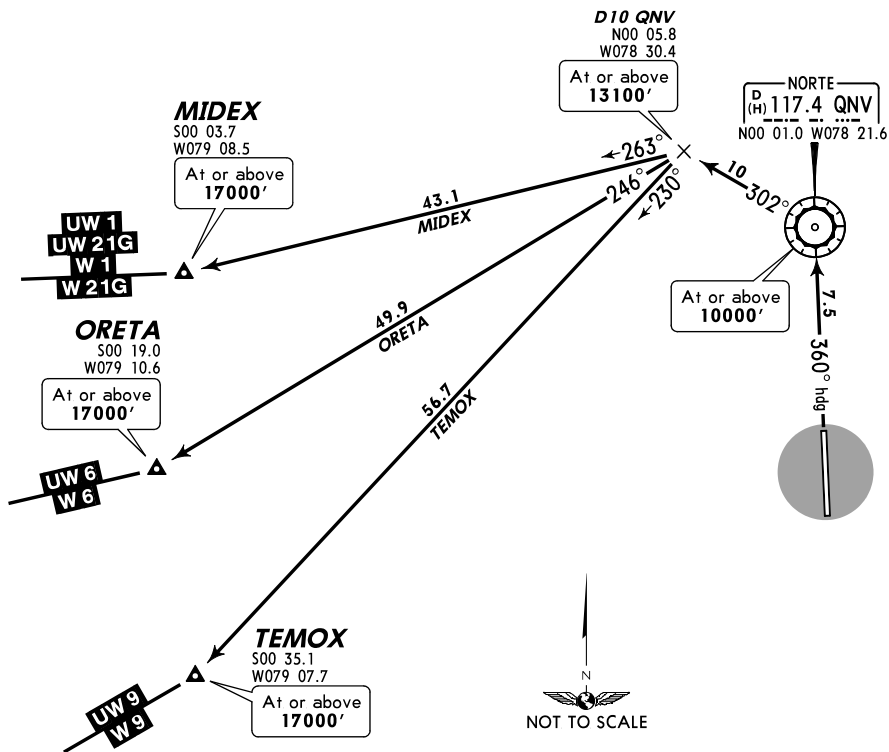
After take-off **MAINTAIN** runway heading to QNV, then climb on course 360° (QNV R-360) to D10 QNV, turn **RIGHT** to track 041° direct to ARNOK; or, turn **RIGHT** to track 051° direct to ANBAL; or, proceed according to ATC instructions.

Apt Elev  
7910'

Trans level: FL180 Trans alt: 18000'



MIDEX [MIDEX], ORETA [ORETA], TEMOX [TEMOX]  
DEPARTURES  
(RWY 36)



These SIDs require take-off minimums:  
Ceiling 100m, Visibility 1000m and a minimum  
climb gradient of 5.0% (304' per NM) to D10 QNV.

Gnd speed-KT	75	100	150	200	250	300
5.0% V/V (fpm)	380	506	760	1013	1266	1519

Altitude at distance from QNV

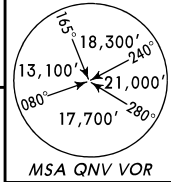
QNV DME	7.5	7	6	5	4	3	2	1	0
ALTITUDE	7792'	7940'	8250'	8550'	8860'	9160'	9460'	9770'	10070'

INITIAL CLIMB

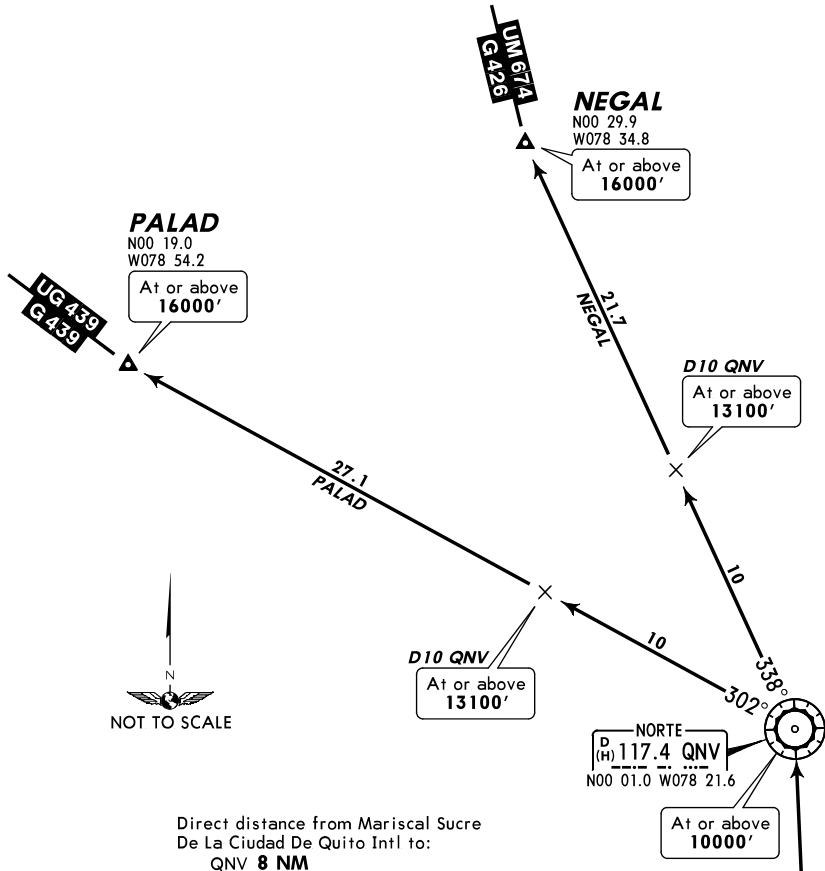
After take-off **MAINTAIN** runway heading to QNV, then climb on course 302° (QNV R-302) to D10 QNV, turn LEFT to track 263° direct MIDEX; or, turn LEFT to track 246° direct ORETA; or, turn LEFT to track 230° direct TEMOX; or, proceed according to ATC instructions.

Apt Elev  
7910'

Trans level: FL180 Trans alt: 18000'



**NEGAL [NEGAL], PALAD [PALAD]  
DEPARTURES  
(RWY 36)**



Direct distance from Mariscal Sucre  
De La Ciudad De Quito Intl to:  
QNV **8 NM**

These SIDs require take-off minimums:  
Ceiling 100m, Visibility 1000m and a minimum  
climb gradient of 5.0% (304' per NM) to D10 QNV.

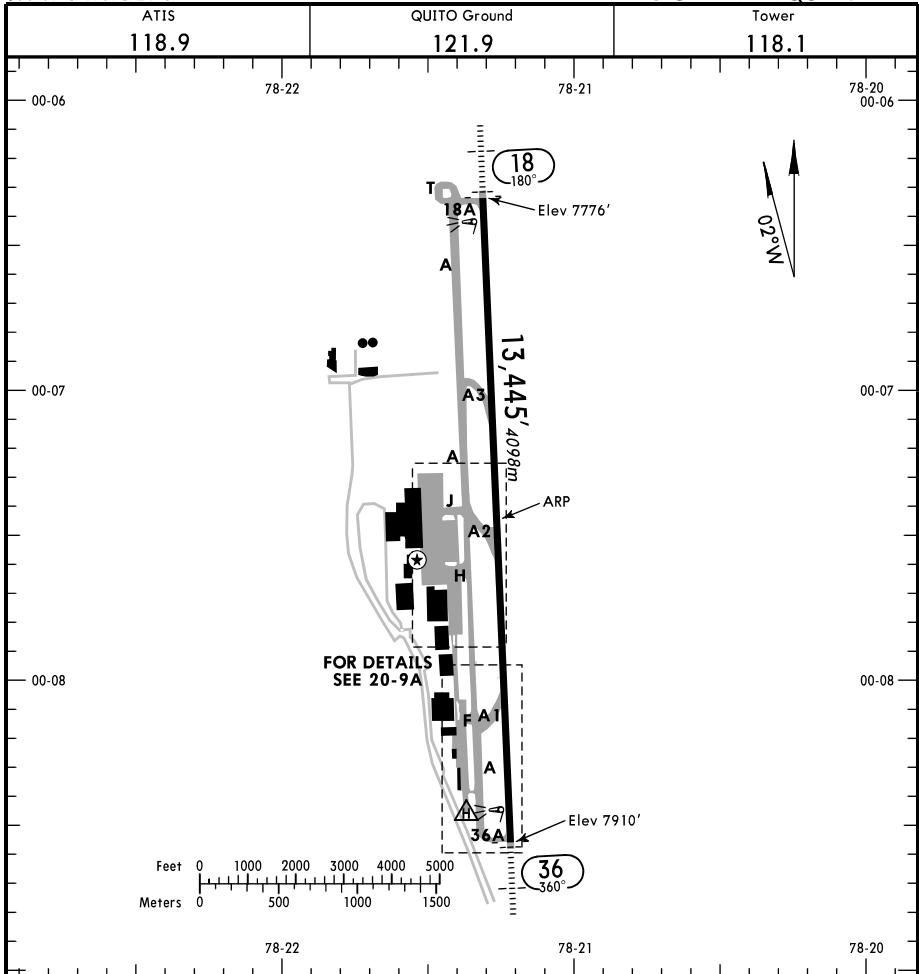
Gnd speed-KT	75	100	150	200	250	300
5.0% V/V (fpm)	380	506	760	1013	1266	1519

Altitude at distance from QNV

QNV DME	7.5	7	6	5	4	3	2	1	0
ALTITUDE	7792'	7940'	8250'	8550'	8860'	9160'	9460'	9770'	10070'

**INITIAL CLIMB**

After take-off **MAINTAIN** runway heading to QNV. Turn **LEFT** to intercept QNV R-302 (302° course) to PALAD; or, turn **LEFT** to intercept QNV R-338 (338° course) to NEGAL; or, proceed according to ATC instructions.



ADDITIONAL RUNWAY INFORMATION

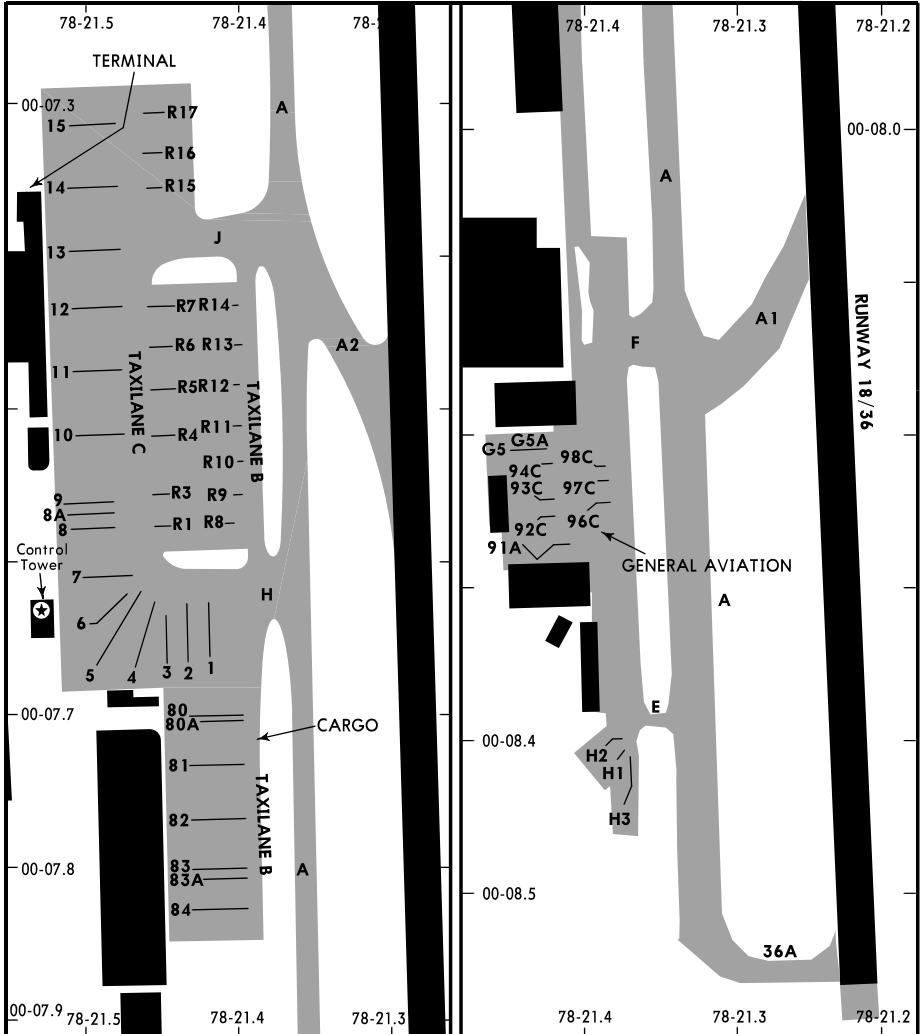
RWY				USABLE LENGTHS		TAKE-OFF	WIDTH
	HIRL	SALS	PAPI-L (angle 3.2°)	Threshold	Glide Slope		
18	HIRL	SALS	PAPI-L (angle 3.2°)				148'
36	HIRL	ALS	PAPI-L (angle 3.2°)		12299' 3749m		45m

TAKE-OFF

All Rwy's

- A
- B
- C
- D

100m - 1.5 km



**PARKING GATE COORDINATES**

GATE No.	COORDINATES	GATE No.	COORDINATES
<b>TERMINAL</b>		<b>CARGO</b>	
1	S00 07.7 W078 21.4	80, 80A, 81	S00 07.7 W078 21.5
2 thru 5	S00 07.7 W078 21.5	82, 83, 83A, 84	S00 07.8 W078 21.5
6 thru 8, 8A, 9	S00 07.6 W078 21.5	<b>GENERAL AVIATION</b>	
10 thru 12	S00 07.5 W078 21.6	91A, 92C	S00 08.3 W078 21.4
13 thru 15	S00 07.4 W078 21.6	93C, 94C	S00 08.2 W078 21.4
R1, R3	S00 07.6 W078 21.5	96C	S00 08.3 W078 21.4
R4 thru R7	S00 07.5 W078 21.5	97C, 98C	S00 08.2 W078 21.4
R8, R9	S00 07.6 W078 21.4	G5, G5A	S00 08.2 W078 21.4
R10 thru R14	S00 07.5 W078 21.4	H1, H2	S00 08.4 W078 21.4
R15 thru R17	S00 07.4 W078 21.5	H3	S00 08.5 W078 21.4

CHANGES: Ramp revised.

SEQM/UIO 15 MAR 13  
 MARISCAL SUCRE DE LA  
 CIUDAD DE QUITO INTL

JEPPESEN

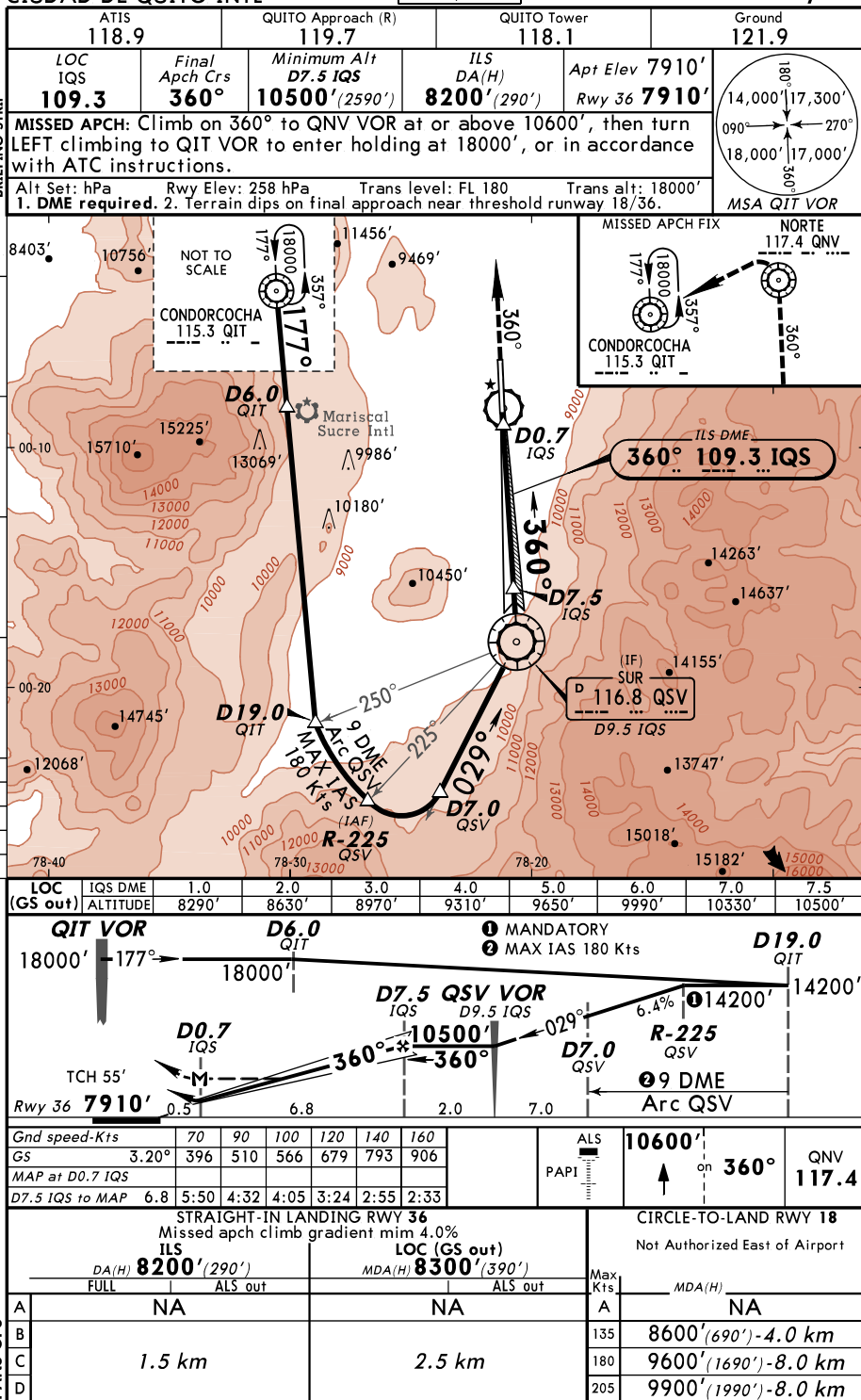
MISSED APCH  
 CLIMB GRADIENT  
 MIM 4.0%

QUITO, ECUADOR

(21-1)

CAT B, C & D

APCH 1 VOR ILS Rwy 36

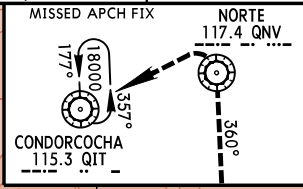
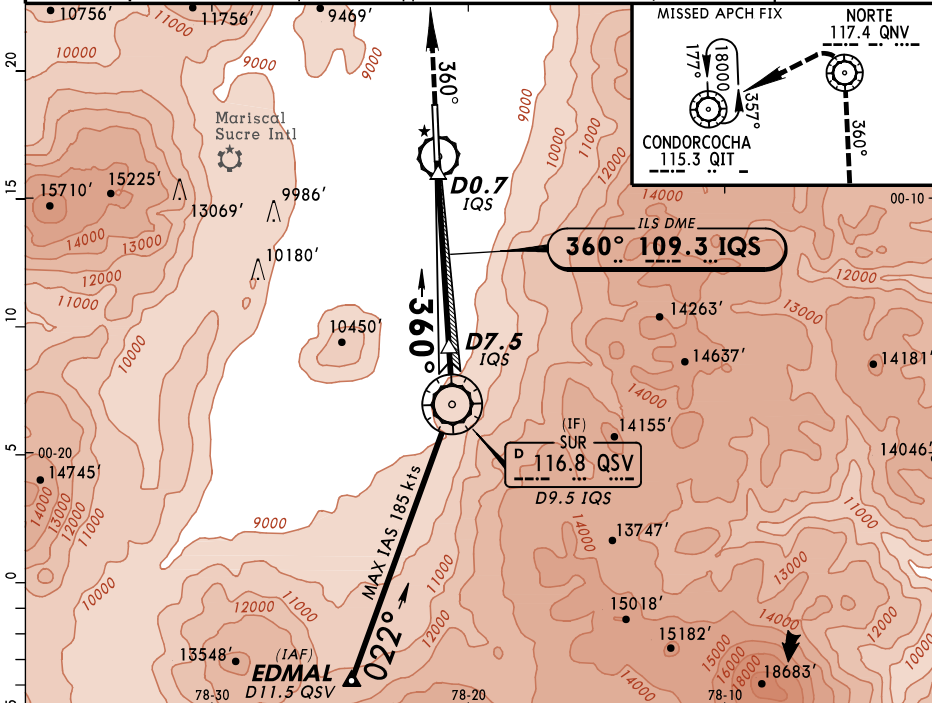
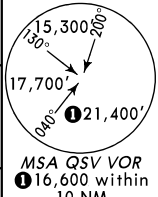


CHANGES: Missed approach, minimums, profile depiction.

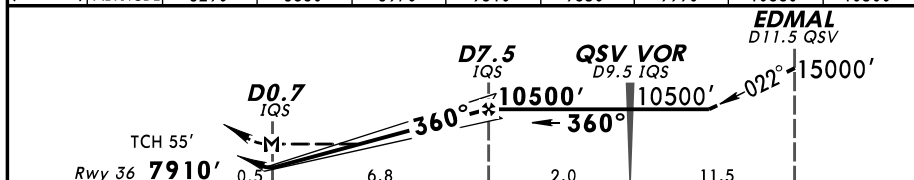
© JEPPESEN, 2012, 2013. ALL RIGHTS RESERVED.



ATIS 118.9		QUITO Approach (R) 119.7		QUITO Tower 118.1		Ground 121.9	
LOC IQS <b>109.3</b>	Final Apch Crs <b>360°</b>	Minimum Alt <b>D7.5 IQS</b> 10500' (2590')	ILS DA(H) <b>8200'</b> (290')	Apt Elev 7910' Rwy 36 <b>7910'</b>			
MISSED APCH: Climb on 360° to QNV VOR at or above 10600', then turn LEFT climbing to QIT VOR to enter holding at 18000', or in accordance with ATC instructions.							
Alt Set: hPa		Rwy Elev: 258 hPa		Trans level: FL 180		Trans alt: 18000'	
1. DME required. 2. Terrain dips on final approach near threshold runway 18/36.							



LOC (GS out)	IQS DME ALTITUDE	1.0 8290'	2.0 8630'	3.0 8970'	4.0 9310'	5.0 9650'	6.0 9990'	7.0 10330'	7.5 10500'
--------------	------------------	-----------	-----------	-----------	-----------	-----------	-----------	------------	------------

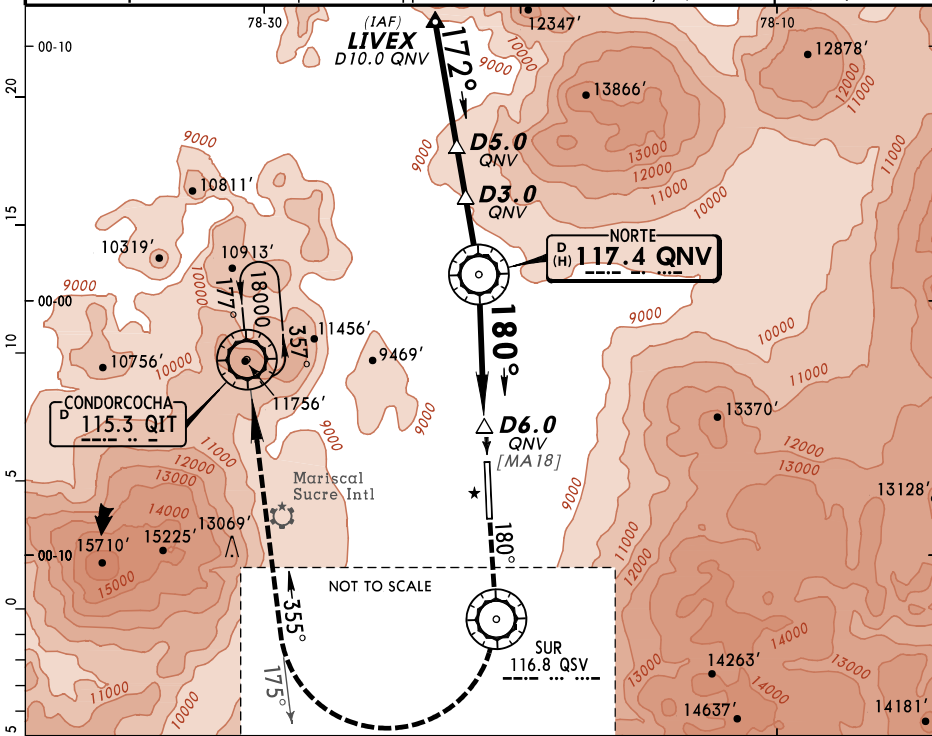


Gnd speed-Kts	70	90	100	120	140	160	ALS 10600'	PAPI ↑	360°	QNV 117.4	
GS	3.20°	396	510	566	679	793					906
MAP at D0.7 IQS											
D7.5 IQS to MAP	6.8	5:50	4:32	4:05	3:24	2:55	2:33				

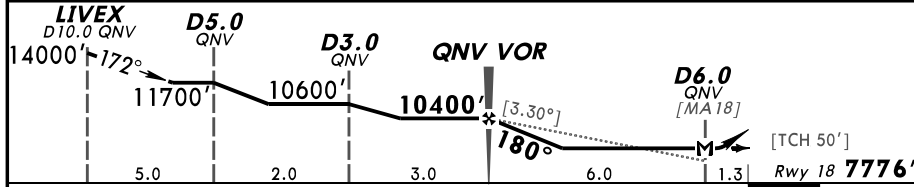
STRAIGHT-IN LANDING RWY 36 Missed apch climb gradient mim 4.0%						CIRCLE-TO-LAND RWY 18 Not Authorized East of Airport					
ILS DA(H) <b>8200'</b> (290')			LOC (GS out) MDA(H) <b>8300'</b> (390')			Max Kts					
FULL			ALS out			MDA(H)					
A	NA			NA			NA				
B							135 8600' (690') - 4.0 km				
C	1.5 km			2.5 km			180 9600' (1690') - 8.0 km				
D							205 9900' (1990') - 8.0 km				

PANS OPS

ATIS 118.9		QUITO Approach (R) 119.7		QUITO Tower 118.1		Ground 121.9	
VOR QNV <b>117.4</b>	Final Apch Crs <b>180°</b>	Minimum Alt QNV VOR <b>10400'</b> (2624')	MDA(H) <b>8350'</b> (574')	Apt Elev 7910' Rwy 18 <b>7776'</b>			
<p><b>MISSED APCH:</b> Climb on 180° to QSV VOR at or above 11500', then turn RIGHT, heading 355° (QIT VOR R-175) climbing to QIT VOR to enter holding at 18000' or in accordance with ATC instructions.</p> <p>Alt Set: hPa Rwy Elev: 254 hPa Trans level: FL 180 Trans alt: 18000'</p> <p>1. DME required. 2. Terrain dips on final approach near threshold runway 18/36.</p>							
							<p>① 21000' MSA QNV VOR</p>



QNV DME	QNV VOR	1.0	2.0	3.0	4.0	5.0	6.0
ALTITUDE	10400'	10060'	9720'	9380'	9040'	8700'	8350'



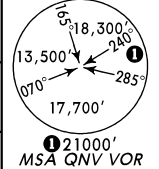
Gnd speed-Kts	70	90	100	120	140	160	SALS PAPI-L	11500'	on 180°	QSV 116.8
Descent angle [3.30°]	409	526	584	701	817	934				
MAP at D6.0 QNV	6.0	5:09	4:00	3:36	3:00	2:34				
QNV VOR to MAP	6.0	5:09	4:00	3:36	3:00	2:34	2:15			

STRAIGHT-IN LANDING RWY 18						CIRCLE-TO-LAND RWY 36					
Missed apch climb gradient mim 4.0%						Not Authorized East of Airport					
MDA(H) <b>8350'</b> (574')						ALS out					
A	NA						Max Kts	NA			
B	2.5 km						135	8600' (690') - 4.0 km			
C							180	9600' (1690') - 8.0 km			
D							205	9900' (1990') - 8.0 km			

PANS OPS

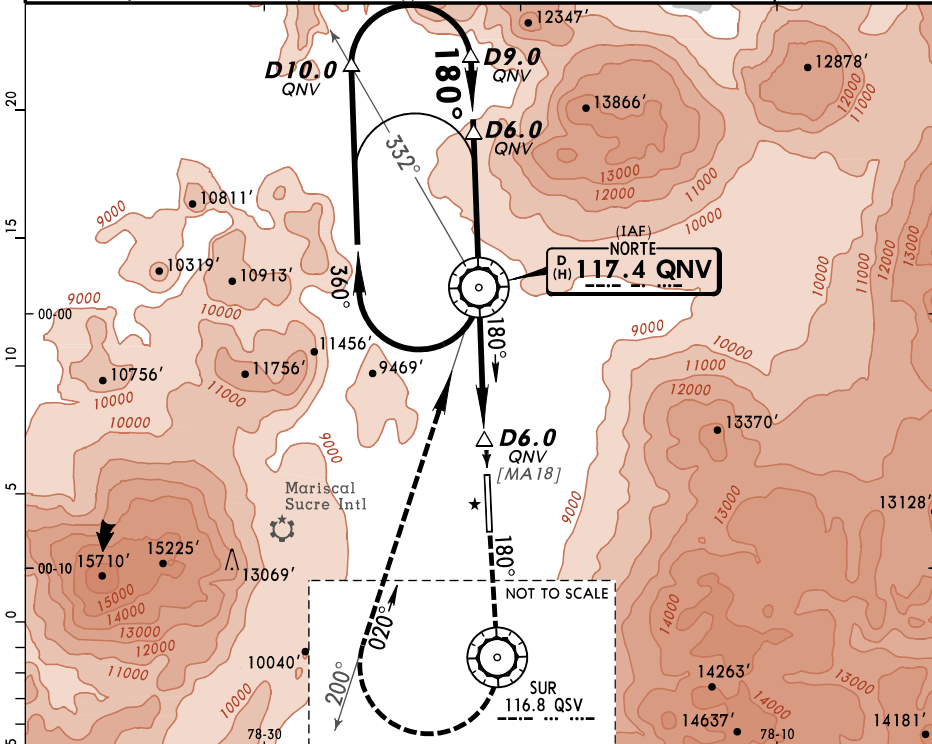
ATIS 118.9	QUITO Approach (R) 119.7	QUITO Tower 118.1	Ground 121.9
---------------	-----------------------------	----------------------	-----------------

VOR QNV <b>117.4</b>	Final Apch Crs <b>180°</b>	Minimum Alt QNV VOR <b>10400'</b> (2624')	MDA(H) <b>8350'</b> (574')	Apt Elev 7910' Rwy 18 <b>7776'</b>
-------------------------	-------------------------------	--	-------------------------------	---------------------------------------

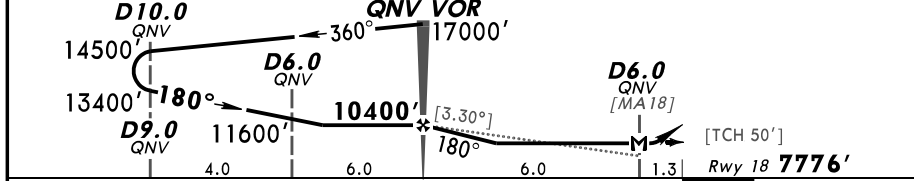


**MISSED APCH:** Climb and maintain runway heading to QSV VOR at or above 11500', then turn RIGHT heading 020° (QNV VOR R-200) climbing to QNV VOR at 17000' or in accordance with ATC instructions.

Alt Set: hPa Rwy Elev: 254 hPa Trans level: FL 180 Trans alt: 18000'  
1. DME required. 2. Terrain dips on final approach near threshold runway 18/36.



QNV DME	QNV VOR	1.0	2.0	3.0	4.0	5.0	6.0
ALTITUDE	10400'	10060'	9720'	9380'	9040'	8700'	8350'



Gnd speed-Kts	70	90	100	120	140	160
Descent angle [3.30°]	409	526	584	701	817	934
MAP at D6.0 QNV						
QNV VOR to MAP	6.0	5:09	4:00	3:36	3:00	2:34
						2:15

SALS	<b>11500'</b>	Runway	QSV
PAPI-L	↑	hdg	<b>116.8</b>

STRAIGHT-IN LANDING RWY 18	
Missed apch climb gradient mim 4.0%	
MDA(H) <b>8350'</b> (574')	
ALS out	
A	NA
B	
C	2.5 km
D	

CIRCLE-TO-LAND RWY 36	
Not Authorized East of Airport	
Max Kts	MDA(H)
A	NA
135	8600' (690') - 4.0 km
180	9600' (1690') - 8.0 km
205	9900' (1990') - 8.0 km

PANS OPS

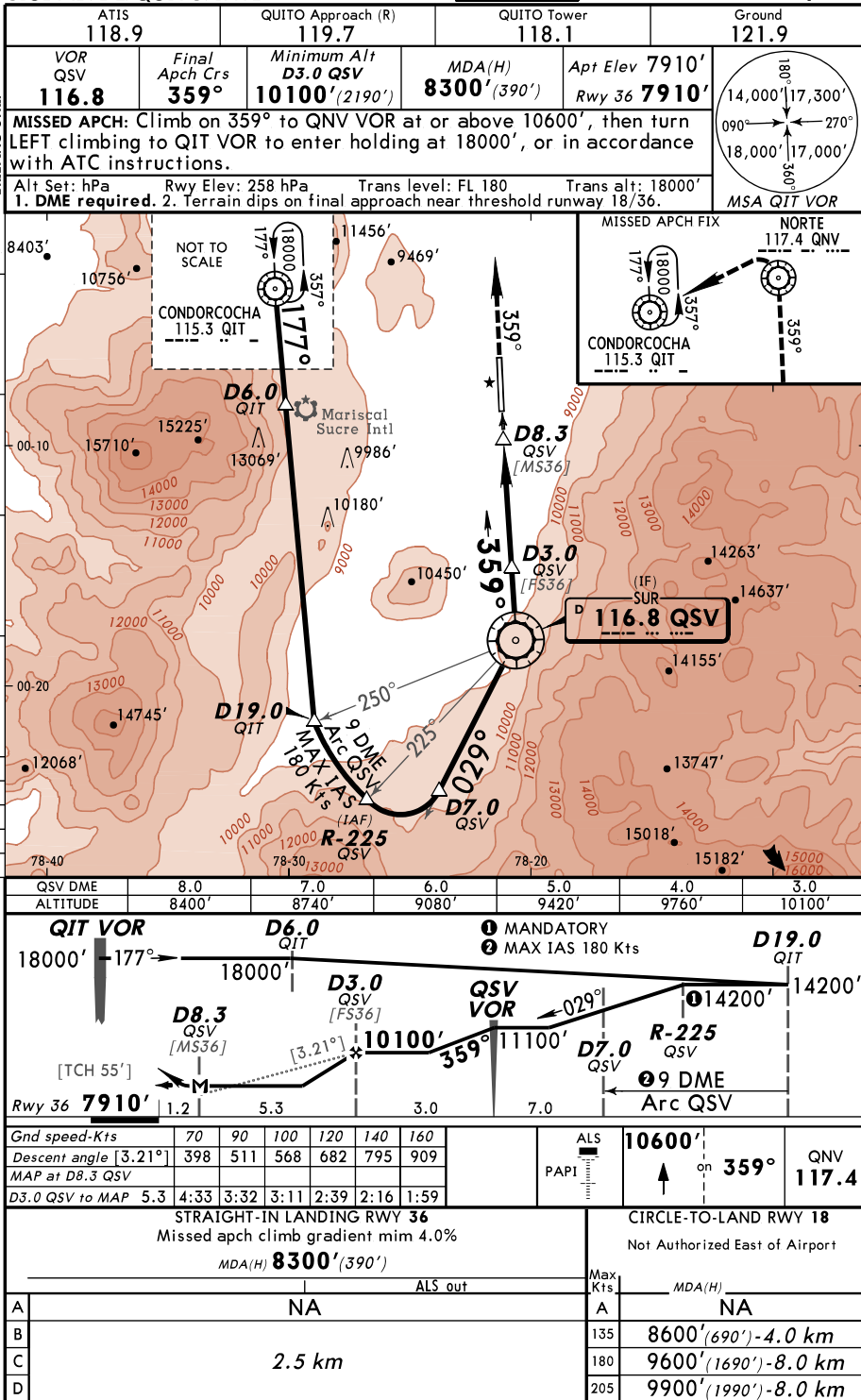
**SEQM/UIO**  
**MARISCAL SUCRE DE LA CIUDAD DE QUITO INTL**

**JEPPESEN** 15 MAR 13 (23-3)

**MISSED APCH CLIMB GRADIENT MIM 4.0%**

**QUITO, ECUADOR**  
**APCH 2 VOR Rwy 36**

CAT B, C & D



CHANGES: Missed approach, profile depiction.

© JEPPESEN, 2012, 2013. ALL RIGHTS RESERVED.

SEQM/UIO

JEPPESEN

MISSED APCH  
CLIMB GRADIENT  
MIM 4.0%

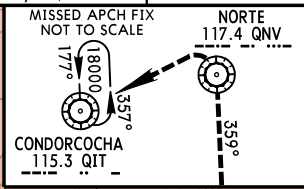
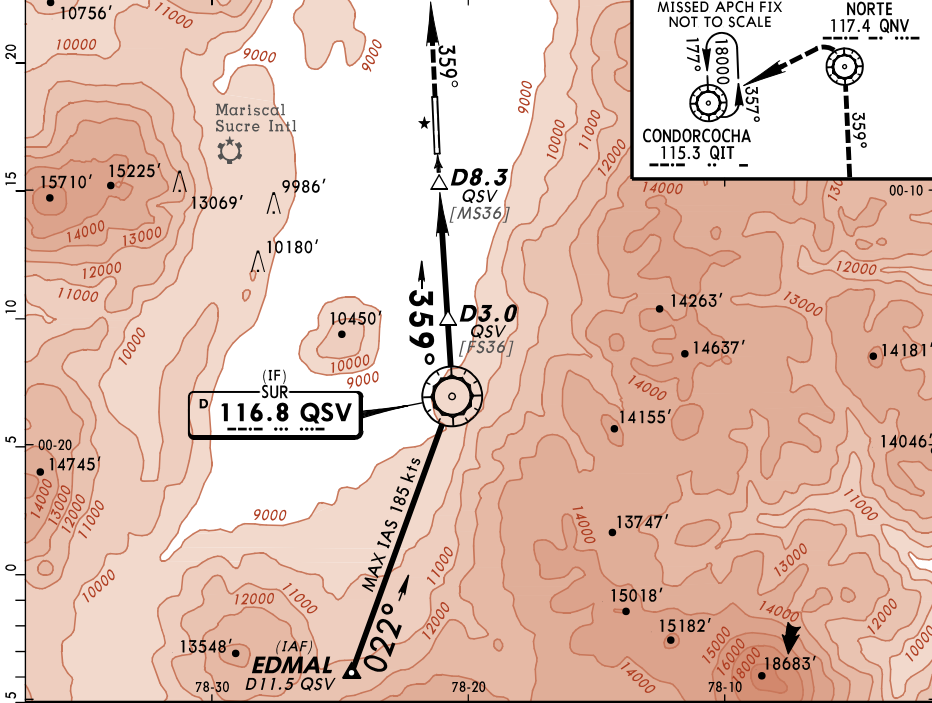
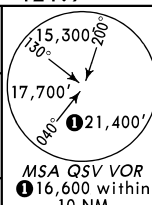
QUITO, ECUADOR

MARISCAL SUCRE DE LA CIUDAD DE QUITO INTL 15 MAR 13 (23-4)

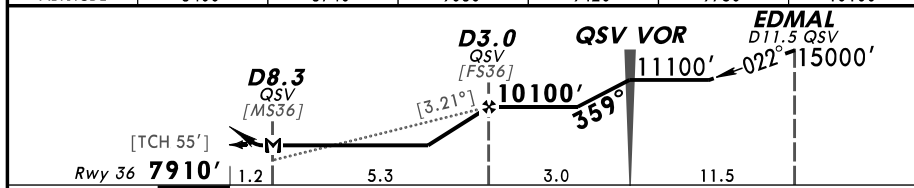
CAT B, C & D

APCH 4 VOR Rwy 36

ATIS 118.9		QUITO Approach (R) 119.7		QUITO Tower 118.1		Ground 121.9	
VOR QSV <b>116.8</b>	Final Apch Crs <b>359°</b>	Minimum Alt <b>D3.0 QSV</b> 10100' (2190')	MDA(H) <b>8300'</b> (390')	Apt Elev 7910' Rwy 36 <b>7910'</b>			
<p><b>MISSED APCH:</b> Climb on 359° to QNV VOR at or above 10600', then turn LEFT climbing to QIT VOR to enter holding at 18000', or in accordance with ATC instructions.</p>							
<p>Alt Set: hPa Rwy Elev: 258 hPa Trans level: FL 180 Trans alt: 18000'  <b>1. DME required.</b> 2. Terrain dips on final approach near threshold runway 18/36.</p>							



QSV DME	8.0	7.0	6.0	5.0	4.0	3.0
ALTITUDE	8400'	8740'	9080'	9420'	9760'	10100'



Gnd speed-Kts	70	90	100	120	140	160	ALS PAPI	10600' ↑ 359° QNV 117.4
Descent angle [3.21°]	398	511	568	682	795	909		
MAP at D8.3 QSV	5.3	4:33	3:32	3:11	2:39	2:16		

STRAIGHT-IN LANDING RWY 36 Missed apch climb gradient mim 4.0%				CIRCLE-TO-LAND RWY 18 Not Authorized East of Airport				
FULL				ALS out				
MDA(H) <b>8300'</b> (390')				Max Kts				
A	NA				A			
B	2.5 km				135			
C					180			
D					205			
				MDA(H)				
				NA				
				8600' (690') - 4.0 km				
				9600' (1690') - 8.0 km				
				9900' (1990') - 8.0 km				

PANS OPS

CHANGES: New procedure.

© JEPPESEN, 2013. ALL RIGHTS RESERVED.