



JEPPESEN[®]

Chart Alert

!! URGENT !!

Date: 30 May 2014

**Subject: Doha, Qatar
Hamad Intl (OTHH)
All Approach procedures – Jeppesen charts 21-1 up to 23-4 dated 23 MAY 14 effective
29 May modified and corrected.**

Please replace the current published charts dated **23 MAY 14** by the charts attached to this Alert.

The corrected charts will be issued with the revision **6 JUN 14** and are attached to this Alert.
The attached charts shall be used with immediate effect.

This Alert is posted on Jeppesen Web site at <http://www.jeppesen.com/company/alerts/aviation-alerts.jsp>.

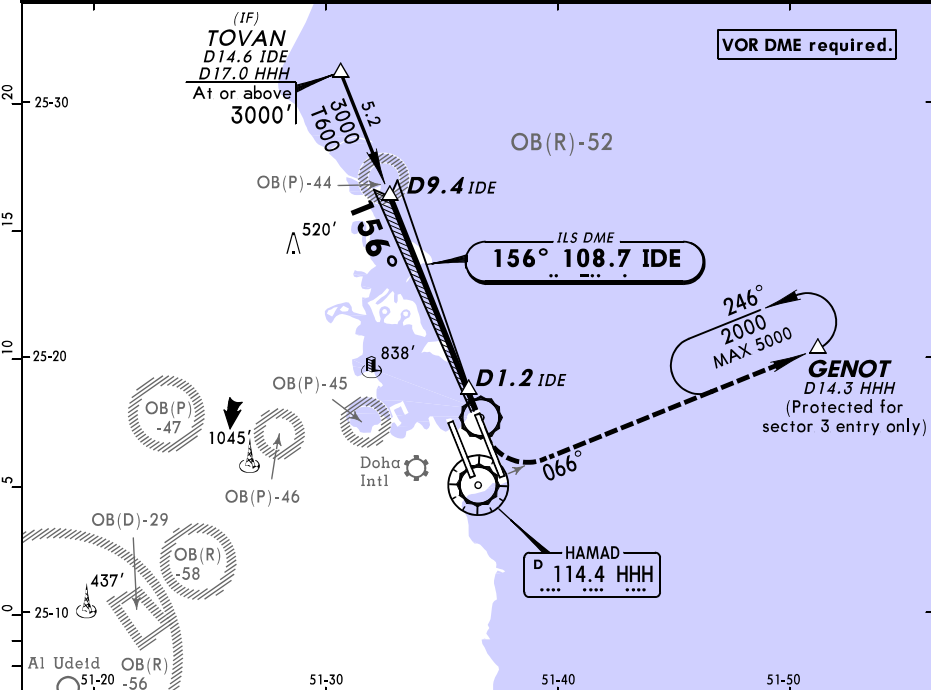
**WE STRONGLY URGE YOU TO MAKE THIS INFORMATION AVAILABLE
TO APPROPRIATE CREW MEMBERS IMMEDIATELY!**

If you have any questions concerning this Chart Alert, please contact Charting Technical Support at:
U.S. Toll Free: 1-800-353-2107 Direct: 1-303-799-9090, Extension 5830
E-mail: ChartSupport@jeppesen.com

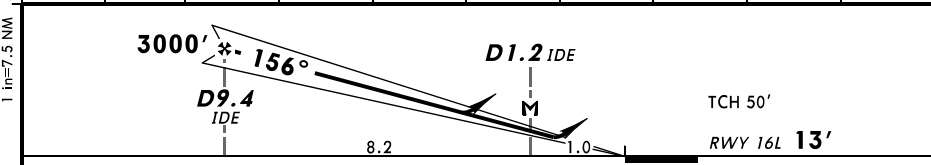
Chart Alerts (formerly ChartWatch Notices) are published to advise users of significant issues
In Jeppesen chart data which may affect aircraft operations. These Alerts are distributed to
Affected chart users and are also available on Jeppesen's Web site at www.jeppesen.com.

BRIEFING STRIP™

D-ATIS	DOHA RADAR (APP)	DOHA Approach	DOHA Director (APP)	HAMAD Tower West	HAMAD Tower East	Ground West	Ground East
126.85	121.1	119.72	119.4	118.02	118.52	121.67	121.87
LOC IDE 108.7	Final Apch Crs 156°	GS D9.4 IDE 3000' (2987')	ILS DA(H) Refer to Minimums	Apt Elev RWY	13'	2100'	
MISSED APCH: Climb STRAIGHT AHEAD to 4000'. At 500' turn LEFT onto R-066 HHH to GENOT and hold. Do not turn before MAP. MAX 230 KT.							
Alt Set: hPa		Rwy Elev: 0 hPa		Trans level: FL 150		Trans alt: 13000'	



LOC (GS out)	IDE DME ALTITUDE	9.0 2880'	8.0 2570'	7.0 2250'	6.0 1930'	5.0 1610'	4.0 1290'	3.0 980'	2.0 660'
--------------	------------------	-----------	-----------	-----------	-----------	-----------	-----------	----------	----------

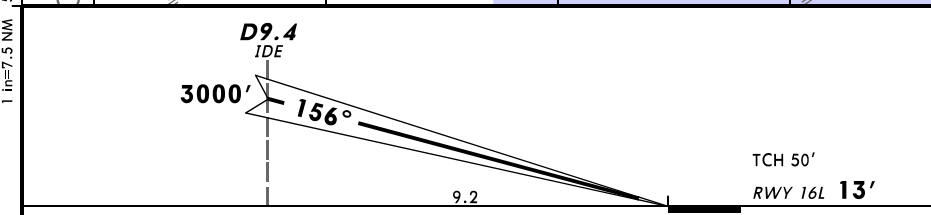
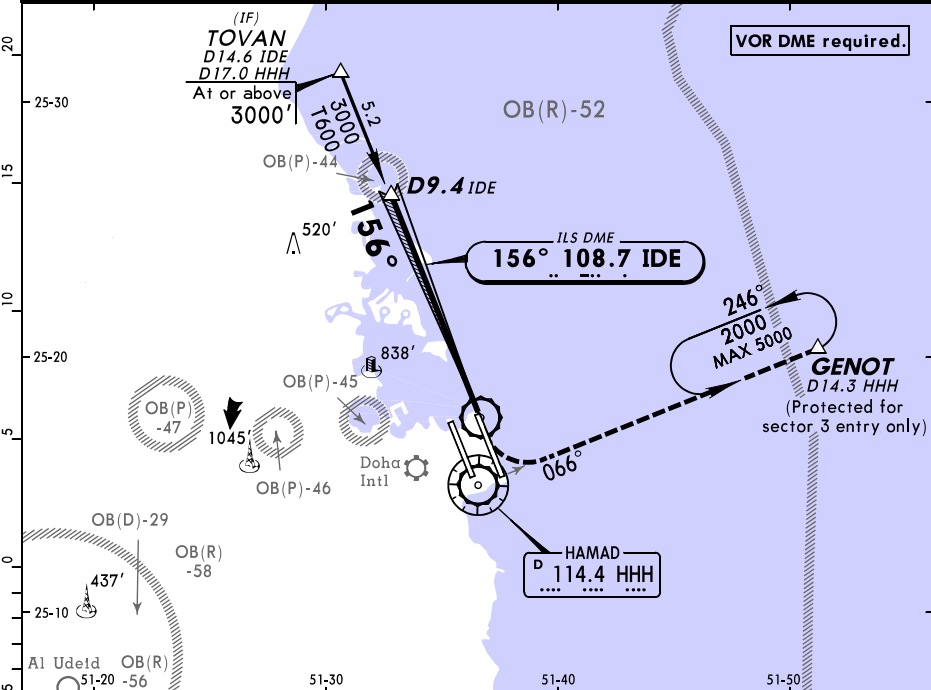


Gnd speed-Kts	70	90	100	120	140	160	ILS-II	230 KT	500'
ILS GS or LOC Descent Angle	3.00°	372	478	531	637	743	PAPI	MAX	↑
MAP at D1.2 IDE									

PANS OPS	Standard				STRAIGHT-IN LANDING RWY 16L		CIRCLE-TO-LAND	
	ILS		LOC (GS out)					
	DA(H) ABC: 213' (200')		D: 220' (207')		MDA(H) 370' (357')			
	FULL		Limited		ALS out		ALS out	
	A						Max Kts	MDA(H)
B						100	620' (607')	1500m
C	RVR 550m	RVR 750m	RVR 1200m	RVR 900m	RVR 1600m	135	620' (607')	1600m
D						180	1240' (1227')	2400m
						205	1240' (1227')	3600m

After LOC apch: VIS 1600m.
 CHANGES: D-ATIS added. Altitude at TOVAN.
 © JEPPESEN, 2014. ALL RIGHTS RESERVED.

D-ATIS	DOHA RADAR (APP)	DOHA Approach	DOHA Director (APP)	HAMAD Tower West	HAMAD Tower East	Ground West	Ground East
126.85	121.1	119.72	119.4	118.02	118.52	121.67	121.87
LOC IDE 108.7	Final Apch Crs 156°	GS D9.4 IDE 3000' (2987')	CAT II & IIIA ILS Refer to Minimums	Apt Elev RWY	13'	2100'	
MISSED APCH: Climb STRAIGHT AHEAD to 4000'. At 500' turn LEFT onto R-066 HHH to GENOT and hold. Do not turn before MAP. MAX 230 KT.							MSA HHH VOR
Alt Set: hPa		Rwy Elev: 0 hPa		Trans level: FL 150		Trans alt: 13000'	



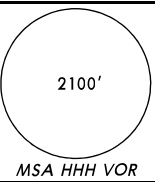
Gnd speed-Kts	70	90	100	120	140	160	HIALS-II PAPI PAPI 230 KT 500' MAX ↑
GS	3.00°	372	478	531	637	849	

Standard		STRAIGHT-IN LANDING RWY 16L	
CAT IIIA ILS	CAT II ILS		
DH 50'	ABC: RA 100' DA(H) 113'(100')		
	D: RA 118' DA(H) 129'(116')		
RVR 200m	RVR 300m		

I Operators applying U.S. Ops Specs: Autoland or HUD required below 350m.
 CHANGES: D-ATIS added. Altitude at TOVAN. © JEPPESEN, 2013, 2014. ALL RIGHTS RESERVED.

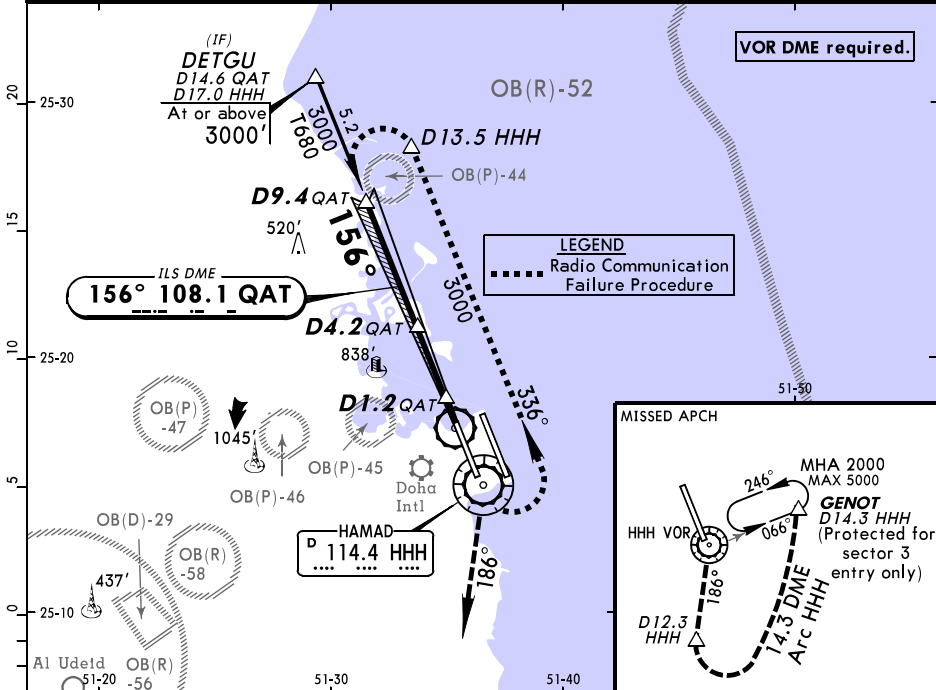
D-ATIS	DOHA RADAR (APP)	DOHA Approach	DOHA Director (APP)	HAMAD Tower West	HAMAD Tower East	Ground West	Ground East
126.85	121.1	119.72	119.4	118.02	118.52	121.67	121.87

LOC QAT 108.1	Final Apch Crs 156°	GS D9.4 QAT 3000' (2987')	ILS DA(H) Refer to Minimums	Apt Elev RWY 13'
-------------------------	-------------------------------	--	--------------------------------	----------------------------

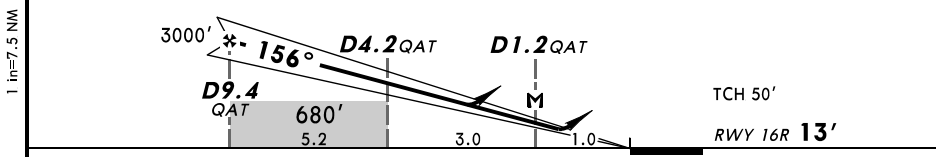


MISSED APCH: Climb STRAIGHT AHEAD until VOR turn RIGHT onto R-186 HHH. At D12.3 HHH turn LEFT to intercept 14.3 DME Arc HHH anti-clockwise to GENOT and hold. Climb and maintain to 2000'. Climb in the hold to 3000'. MAX 230 KT.

Alt Set: hPa Rwy Elev: 0 hPa Trans level: FL 150 Trans alt: 13000'



LOC (GS out)	QAT DME	9.0	8.0	7.0	6.0	5.0	4.0	3.0	2.0	1.0
	ALTITUDE	2880'	2570'	2250'	1930'	1610'	1290'	980'	660'	340'



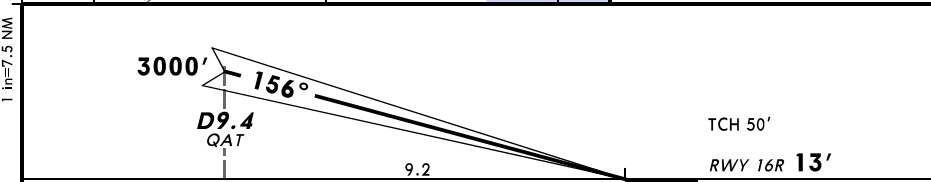
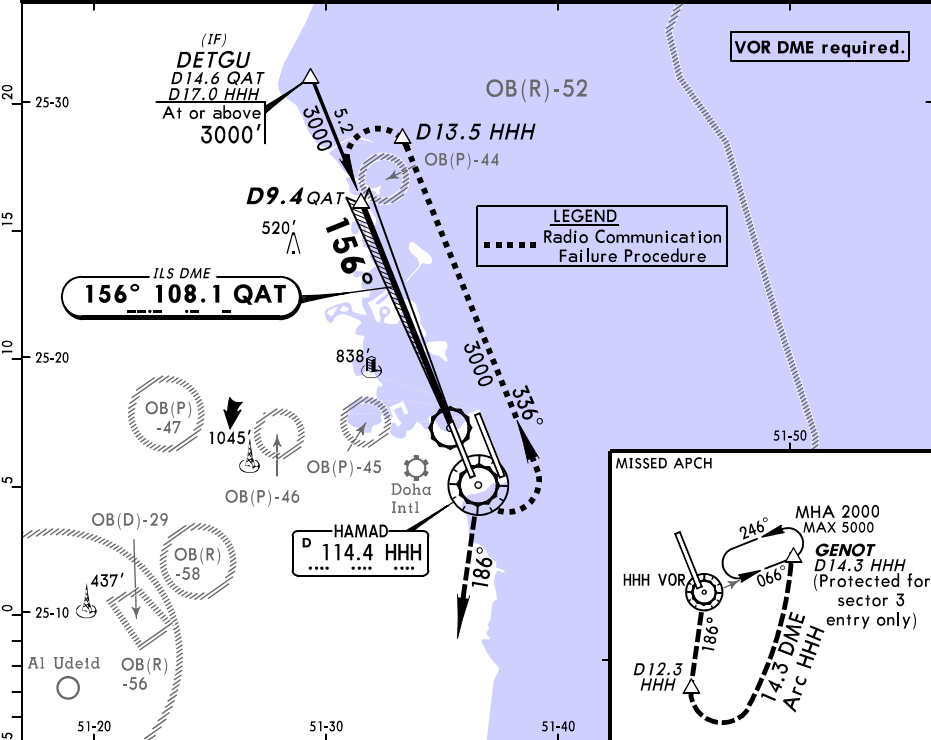
Gnd speed-Kts	70	90	100	120	140	160	HIALS-II PAPI	230 KT	2000'	HHH 114.4
ILS GS or LOC Descent Angle 3.00°	372	478	531	637	743	849		MAX	↑	
MAP at D1.2 QAT										

Standard STRAIGHT-IN LANDING RWY 16R					CIRCLE-TO-LAND				
ILS			LOC (GS out)						
DA(H) ABC: 213' (200')			D: 220' (207')		MDA(H) 370' (357')				
FULL		Limited	ALS out	ALS out	Max Kts	MDA(H)		VIS	
A					100	620' (607')		1500m	
B					135	620' (607')		1600m	
C	RVR 550m	RVR 750m	RVR 1200m	RVR 900m	180	1240' (1227')		2400m	
D					205	1240' (1227')		3600m	

After LOC apch: VIS 1600m.

CHANGES: D-ATIS added. Profile. Altitude at DETGU.

D-ATIS 126.85	DOHA RADAR (APP) 121.1	DOHA Approach 119.72	DOHA Director (APP) 119.4	HAMAD Tower West 118.02 East 118.52	Ground West 121.67 East 121.87
LOC QAT 108.1	Final Apch Crs 156°	GS D9.4 QAT 3000' (2987')	CAT II & IIIA ILS Refer to Minimums	Apt Elev 13' RWY 13'	2100'
<p>MISSED APCH: Climb STRAIGHT AHEAD until HHH turn RIGHT onto R-186 HHH. At D12.3 HHH turn LEFT to intercept D14.3 HHH arc anti-clockwise to GENOT and hold. Climb and maintain to 2000'. Climb in the hold to 3000'. MAX 230 KT.</p>					
Alt Set: hPa		Rwy Elev: 0 hPa		Trans level: FL 150	
				Trans alt: 13000'	
					MSA HHH VOR



Gnd speed-Kts	70	90	100	120	140	160	HIALS-II PAPI PAPI	230 KT MAX	2000' ↑	HHH 114.4
GS	3.00°	372	478	531	637	743				

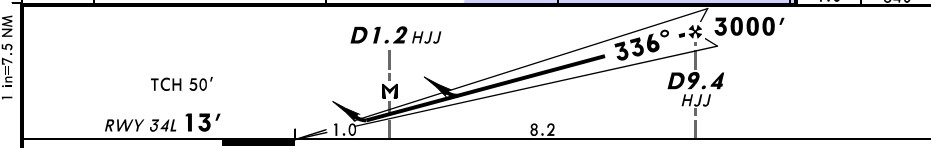
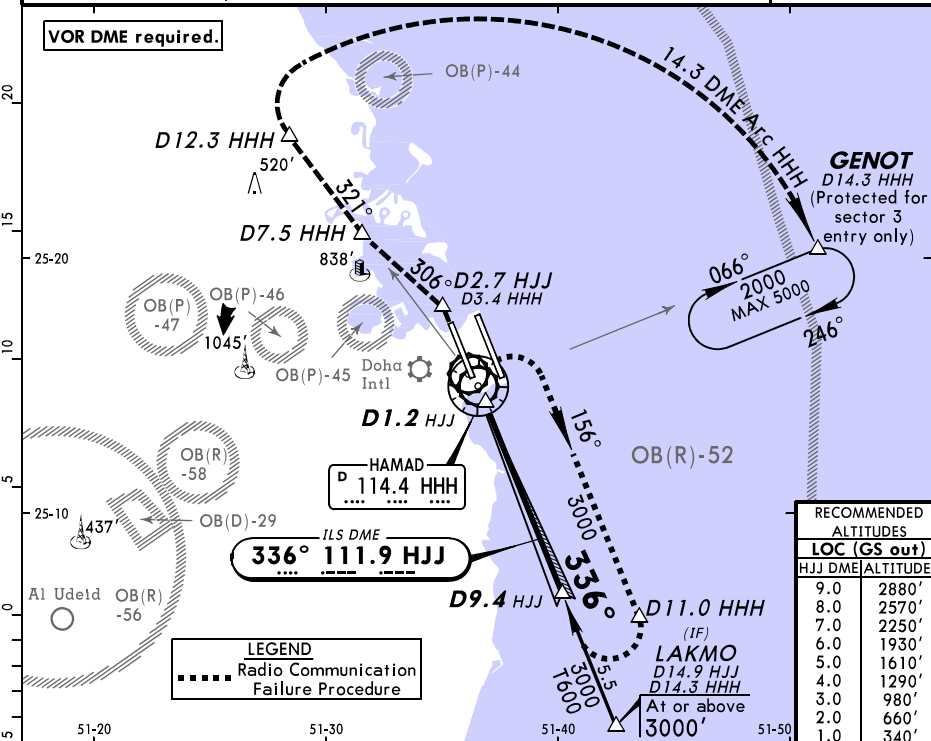
PANS OPS	Standard	STRAIGHT-IN LANDING RWY 16R	
	CAT IIIA ILS	CAT II ILS	
	DH 50' RVR 200m	ABC: RA 100' DA(H) 113'(100') D: RA 123' DA(H) 132'(119') RVR 300m	

Operators applying U.S. Specs: Autoland or HUD required below RVR 350m.

OTHM/DOH HAMAD INTL

DOHA, QATAR ILS Rwy 34L

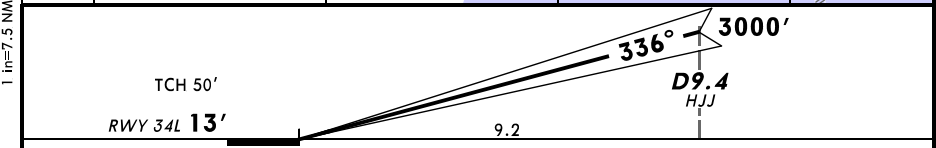
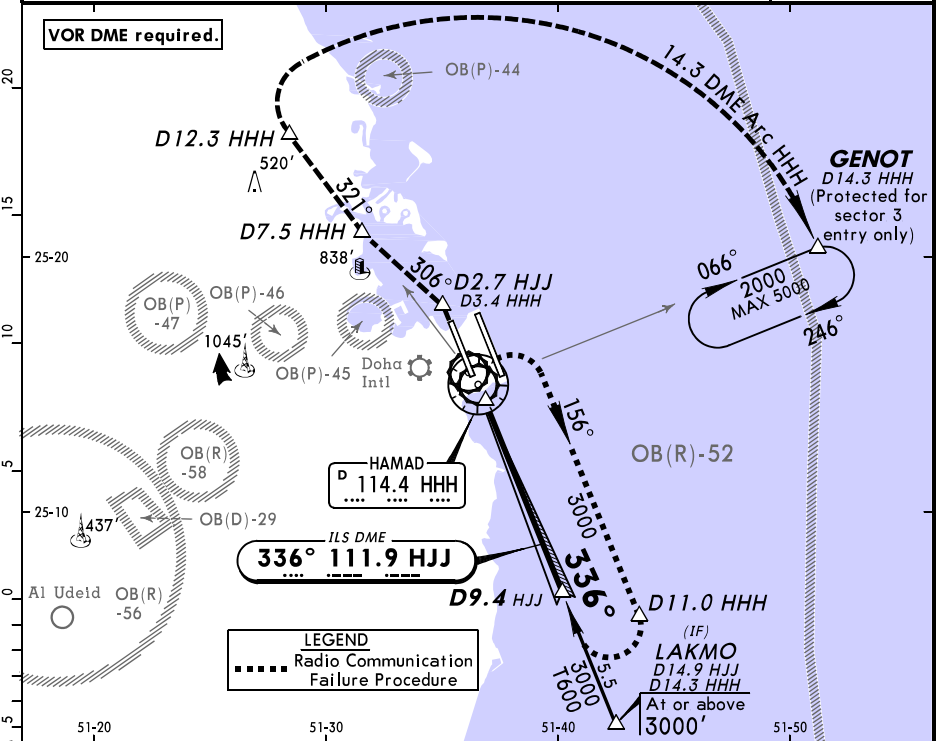
D-ATIS	DOHA RADAR (APP)	DOHA Approach	DOHA Director (APP)	HAMAD Tower West	HAMAD Tower East	Ground West	Ground East
126.85	121.1	119.72	119.4	118.02	118.52	121.67	121.87
LOC HJJ 111.9	Final Apch Crs 336°	GS D9.4 HJJ 3000' (2987')	ILS DA(H) Refer to Minimums	Apt Elev RWY	13'	2100'	
MISSED APCH: Climb STRAIGHT AHEAD at D2.7 HJJ turn LEFT onto 306° to intercept R-321 HHH (do not cross R-318 HHH), crossing D7.5 HHH at or above 2500'. At 12.3 HHH turn RIGHT to intercept the 14.3 DME Arc HHH at 5000'. Proceeding clockwise to GENOT and hold. Climb and maintain 5000'. MAX 230 KT.						MSA HHH VOR	
Alt Set: hPa		Rwy Elev: 0 hPa		Trans level: FL 150		Trans alt: 13000'	



Gnd speed-Kts	70	90	100	120	140	160	HIALS-II PAPI PAPI	230 KT MAX	D2.7 HJJ	
ILS GS or LOC Descent Angle	3.00°	372	478	531	637	743				849
MAP at D1.2 HJJ										

PANS OPS	Standard						STRAIGHT-IN LANDING RWY 34L		LOC (GS out)		CIRCLE-TO-LAND	
	Missed apch climb grad mim 4.0%			ILS Missed apch climb grad mim 2.5%								
	ABC: 213' (200')			DA(H) A: 301' (288') C: 320' (307')			B: 310' (297') D: 330' (317')		MDA(H) 340' (327')			
	DA(H) D: 220' (207')											
	FULL	Limited	ALS out	FULL	Limited	ALS out	FULL	ALS out	Max Kts	MDA(H)	VIS	
A								100	620' (607')	1500m		
B								135	620' (607')	1600m		
C	RVR 550m	RVR 750m	RVR 1200m					180	1240' (1227')	2400m		
D								205	1240' (1227')	3600m		

D-ATIS 126.85	DOHA RADAR (APP) 121.1	DOHA Approach 119.72	DOHA Director (APP) 119.4	HAMAD Tower West 118.02 East 118.52	Ground West 121.67 East 121.87
LOC HJJ 111.9	Final ApcH Crs 336°	GS D9.4 HJJ 3000' (2987')	CAT II & IIIA ILS Refer to Minimums	Apt Elev 13' RWY 13'	2100' MSA HHH VOR
MISSED APCH: Climb STRAIGHT AHEAD at D2.7 HJJ turn LEFT onto 306° to intercept R-321 HHH (do not cross R-318 HHH), crossing D7.5 HHH at or above 2500'. At 12.3 HHH turn RIGHT to intercept the 14.3 DME Arc HHH at 5000'. Proceeding clockwise to GENOT and hold. Climb and maintain 5000'. MAX 230 KT.					
Alt Set: hPa		Rwy Elev: 0 hPa	Trans level: FL 150		Trans alt: 13000'



Gnd speed-Kts	70	90	100	120	140	160	HIALS-II PAPI PAPI 230 KT MAX ↑ D2.7 HJJ
GS	3.00°	372	478	531	637	743	

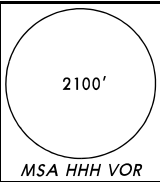
Standard			STRAIGHT-IN LANDING RWY 34L		
CAT IIIA ILS	Missed apch climb grad min 4.0%		CAT II ILS	Missed apch climb grad min 2.5%	
	ABC: RA 100' DA(H) 113' (100')	D: RA 120' DA(H) 132' (119')		A: RA 174' DA(H) 184' (171')	B: RA 191' DA(H) 200' (187')
DH 50'			C: RA 209' DA(H) 213' (200')		
RVR 200m	RVR 300m		RVR 450m		

I Operators applying U.S. Specs: Autoland or HUD required below RVR 350m.
 CHANGES: D-ATIS added. Missed approach. © JEPPESEN, 2014. ALL RIGHTS RESERVED.

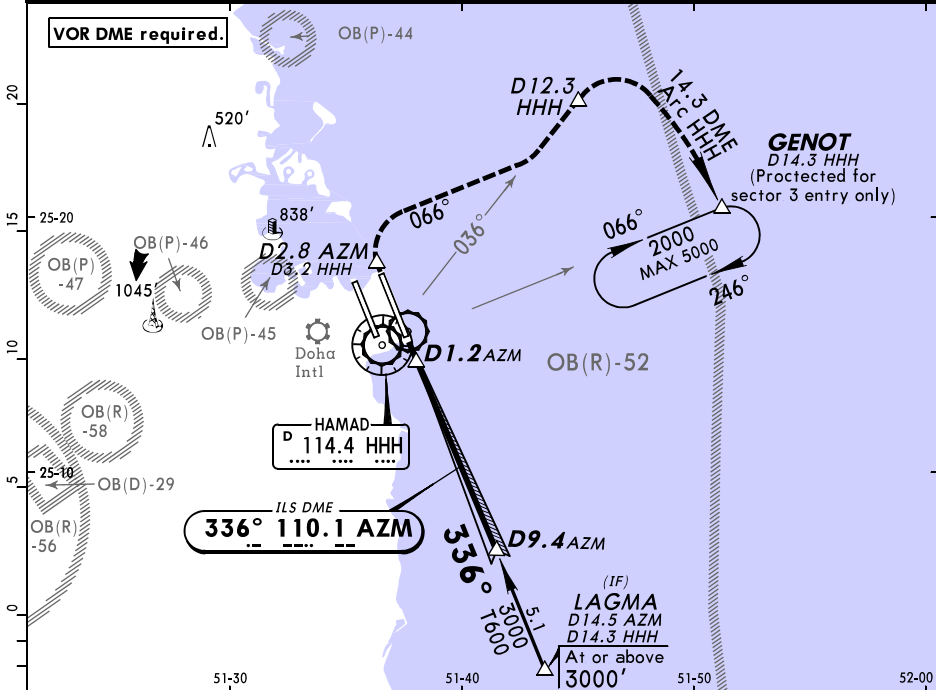
D-ATIS	DOHA RADAR (APP)	DOHA Approach	DOHA Director (APP)	HAMAD Tower West	HAMAD Tower East	Ground West	Ground East
126.85	121.1	119.72	119.4	118.02	118.52	121.67	121.87

LOC AZM 110.1	Final Apch Crs 336°	GS D9.4 AZM 3000' (2987')	ILS DA(H) Refer to Minimums	Apt Elev RWY	13' 13'
-------------------------	-------------------------------	--	--------------------------------	-----------------	-------------------

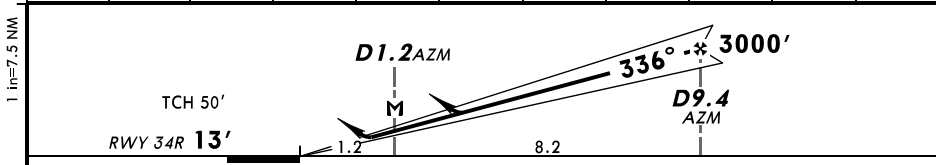
MISSED APCH: Climb STRAIGHT AHEAD. At D2.8 AZM turn RIGHT onto 066° to intercept R-036 HHH. At D12.3 HHH turn RIGHT to intercept 14.3 DME Arc HHH clockwise to GENOT and hold. Climb and maintain 4000'. MAX 230 KT.



Alt Set: hPa Rwy Elev: 0 hPa Trans level: FL 150 Trans alt: 13000' MSA HHH VOR



LOC (GS out)	AZM DME	1.0	2.0	3.0	4.0	5.0	6.0	7.0	8.0	9.0
	ALTITUDE	340'	660'	980'	1290'	1610'	1930'	2250'	2570'	2880'



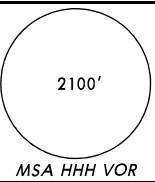
Gnd speed-Kts	70	90	100	120	140	160	HIALS-II PAPI PAPI 230 KT MAX	D2.8 AZM
ILS GS or LOC Descent Angle 3.00°	372	478	531	637	743	849		

Standard STRAIGHT-IN LANDING RWY 34R					CIRCLE-TO-LAND				
ILS			LOC (GS out)						
C: 222' (209')			DA(H) AB: 213' (200') D: 235' (222')		MDA(H) 320' (307')				
FULL		Limited	ALS out	ALS out					
A					Max Kts	MDA(H)	VIS		
B					100	620' (607')	1500m		
C	RVR 550m	RVR 750m	RVR 1200m	RVR 750m	135	620' (607')	1600m		
D					180	1240' (1227')	2400m		
					205	1240' (1227')	3600m		

D-ATIS	DOHA RADAR (APP)	DOHA Approach	DOHA Director (APP)	HAMAD Tower West	HAMAD Tower East	Ground West	Ground East
126.85	121.1	119.72	119.4	118.02	118.52	121.67	121.87

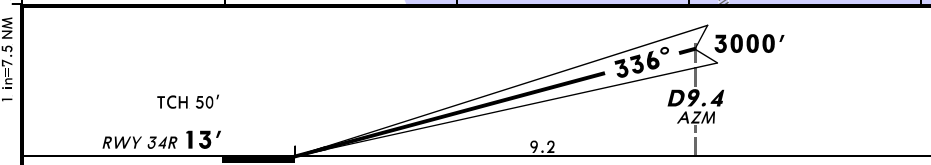
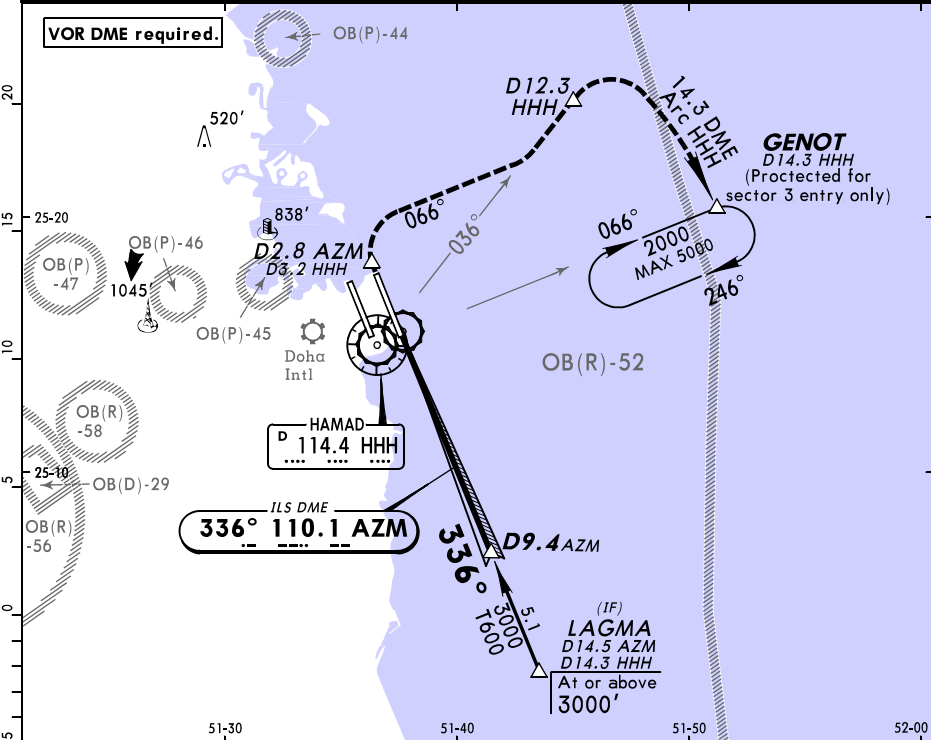
BRIEFING STRIP™

LOC AZM 110.1	Final Apch Crs 336°	GS D9.4 AZM 3000' (2987')	CAT II & IIIA ILS Refer to Minimums	Apt Elev 13'	Rwy 13'
----------------------------	----------------------------------	--	---	--------------	---------



MISSED APCH: Climb STRAIGHT AHEAD. At D2.8 AZM turn RIGHT onto 066° to intercept R-036 HHH. At D12.3 HHH turn RIGHT to intercept 14.3 DME Arc HHH clockwise to GENOT and hold. Climb and maintain 4000'. MAX 230 KT.

Alt Set: hPa	Rwy Elev: 0 hPa	Trans level: FL 150	Trans alt: 13000'	MSA HHH VOR
--------------	-----------------	---------------------	-------------------	-------------



Gnd speed-Kts	70	90	100	120	140	160	HIALS-II PAPI PAPI	230 KT MAX	D2.8 AZM
GS	3.00°	372	478	531	637	743			

Standard				STRAIGHT-IN LANDING Rwy 34R					
CAT IIIA ILS		A		B		C		D	
DH 50'		RA 100'		RA 114'		RA 132'		RA 151'	
		DA(H) 113' (100')		DA(H) 124' (111')		DA(H) 137' (124')		DA(H) 156' (143')	
RVR 200m		RVR 300m		RVR 400m		RVR 450m			

PANS OPS

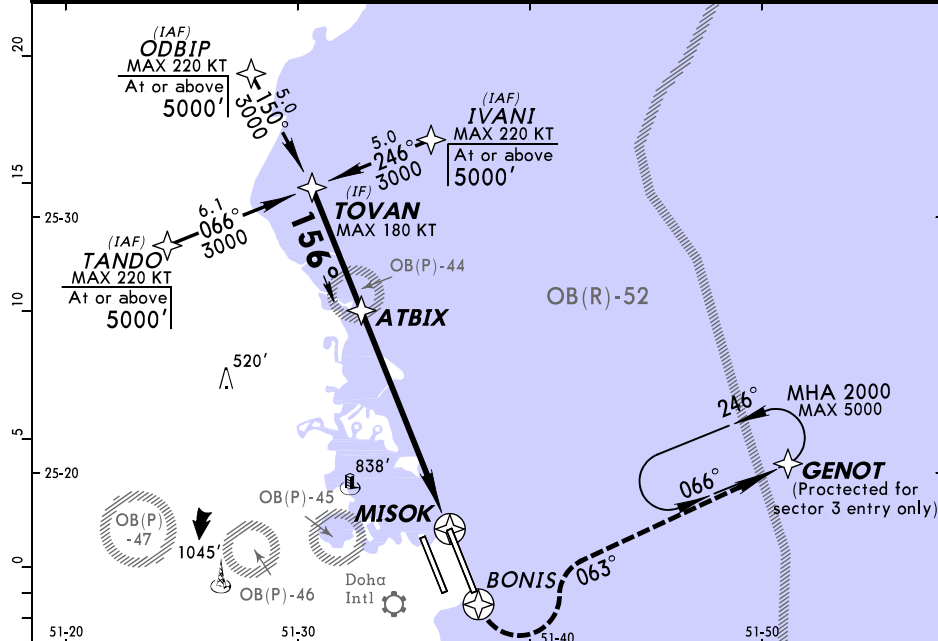
Operators applying U.S. Ops Specs: Autoland or HUD required below 350m.

D-ATIS	DOHA RADAR (APP)	DOHA Approach	DOHA Director (APP)	HAMAD Tower West	HAMAD Tower East	Ground West	Ground East
126.85	121.1	119.72	119.4	118.02	118.52	121.67	121.87

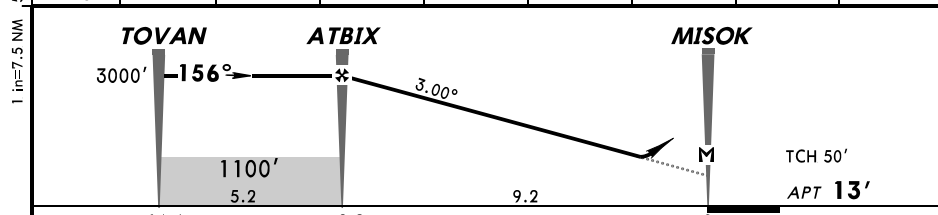
RNAV	Final Apch Crs 156°	Procedure Alt ATBIX 3000' (2987')	LNAV/VNAV DA(H) 370' (357')	Apt Elev 13'	2100'
------	-------------------------------	--	--	---------------------	-------

MISSED APCH: Climb STRAIGHT AHEAD to BONIS. At BONIS turn LEFT to GENOT. Climb and maintain 4000'. MAX 230 KT.

Alt Set: hPa Apt Elev: 0 hPa Trans level: FL 150 Trans alt: 13000'
Procedure not usable below 15°C. MSA ARP



DIST to THR	9.0	8.0	7.0	6.0	5.0	4.0	3.0	2.0
ALTITUDE	2930'	2620'	2300'	1980'	1660'	1340'	1020'	700'



Gnd speed-Kts	70	90	100	120	140	160	HIALS-II PAPI PAPI	230 KT MAX	BONIS ↑
Descent Angle	3.00°	372	478	531	637	743			

MAP at MISOK

Standard STRAIGHT-IN LANDING RWY 16L

LNAV/VNAV DA(H) 370' (357')		LNAV MDA(H) 570' (557')		Max Kts	MDA(H)	VIS
ALS out		ALS out				
A				100	620' (607')	1600m
B				135	620' (607')	1600m
C	RVR 900m	RVR 1600m	RVR 1800m	180	1240' (1227')	2400m
D			CMV 2500m	205	1240' (1227')	3600m

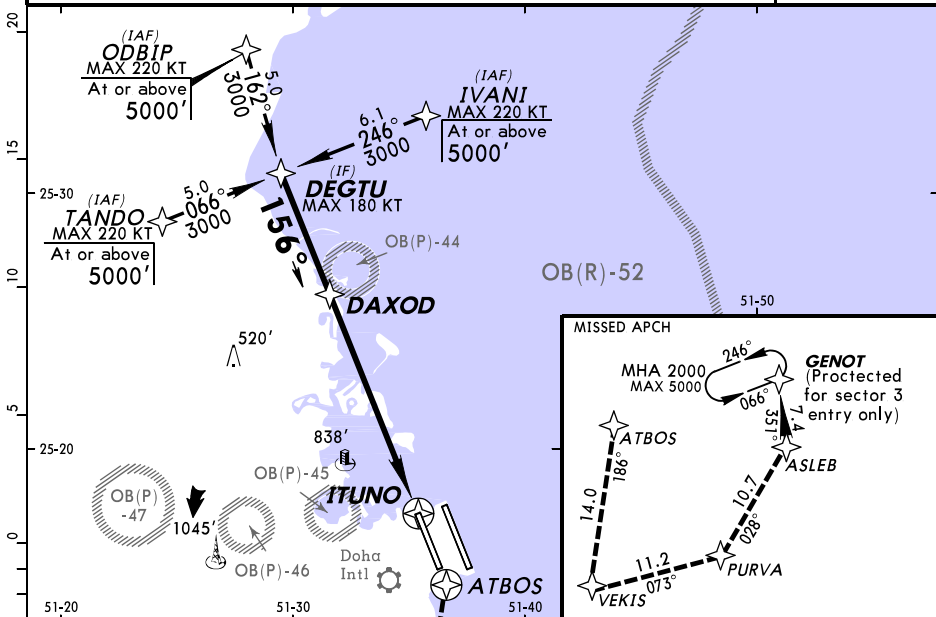
After LNAV apch: VIS 2500m.

D-ATIS	DOHA RADAR (APP)	DOHA Approach	DOHA Director (APP)	HAMAD Tower West	HAMAD Tower East	Ground West	Ground East
126.85	121.1	119.72	119.4	118.02	118.52	121.67	121.87

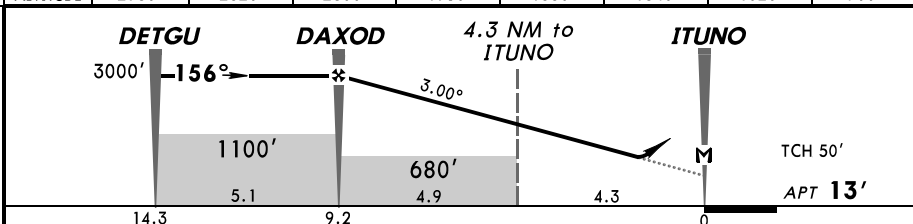
RNAV	Final Apch Crs 156°	Procedure Alt DAXOD 3000' (2987')	LNAV/VNAV DA(H) 380' (367')	Apt Elev 13'	2100' MSA ARP
------	-------------------------------	--	--	------------------------	----------------------

MISSED APCH: Climb STRAIGHT AHEAD to ATBOS. At ATBOS turn RIGHT to VEKIS, then LEFT to PURVA, then LEFT to ASLEB and then LEFT to GENOT. Climb and maintain 2000'. Climb in holding to 3000'. MAX 230 KT.

Alt Set: hPa Apt Elev: 0 hPa Trans level: FL 150 Trans alt: 13000'
Procedure not usable below 15°C.



DIST to THR	9.0	8.0	7.0	6.0	5.0	4.0	3.0	2.0
ALTITUDE	2930'	2620'	2300'	1980'	1660'	1340'	1020'	700'



Gnd speed-Kts	70	90	100	120	140	160	HIALS-II PAPI PAPI	230 KT ATBOS MAX	↑
Descent Angle	3.00°	372	478	531	637	743			

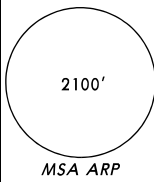
Standard STRAIGHT-IN LANDING RWY 16R

A	LNAV/VNAV		LNAV		Max Kts	MDA(H)	VIS
	DA(H)	ALS out	DA(H)	ALS out			
B	380' (367')		570' (557')		100	620' (607')	1700m
C		RVR 1700m		CMV 2500m	135	620' (607')	1700m
D	RVR 1000m		RVR 1800m		180	1240' (1227')	2400m
					205	1240' (1227')	3600m

After LNAV apch: VIS 2500m.
 CHANGES: D-ATIS added. Note. Altitude at waypoints.
 © JEPPESEN, 2014. ALL RIGHTS RESERVED.

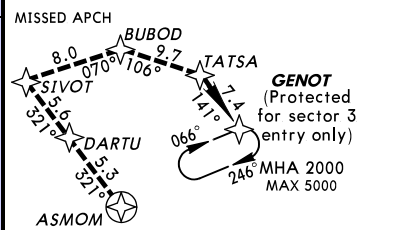
D-ATIS	DOHA RADAR (APP)	DOHA Approach	DOHA Director (APP)	HAMAD Tower West	HAMAD Tower East	Ground West	Ground East
126.85	121.1	119.72	119.4	118.02	118.52	121.67	121.87

RNAV	Final Apch Crs 336°	Procedure Alt VEBAD 3000' (2987')	LNAV/VNAV DA(H) 370' (357')	Apt Elev 13'
------	-------------------------------	--	--	---------------------

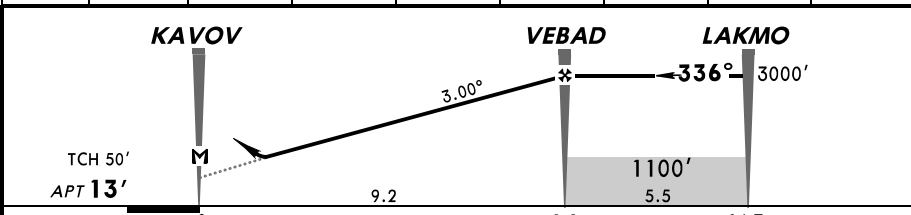


MISSED APCH: Climb STRAIGHT AHEAD to ASMOM. At ASMOM turn LEFT to DARTU, then STRAIGHT AHEAD to SIVOD then turn RIGHT to BUBOD, then turn RIGHT to TATSA and then turn RIGHT to GENOT. Climb and maintain 5000'. MAX 210 KT.

Alt Set: hPa Apt Elev: 0 hPa Trans Level: FL 150 Trans alt: 13000'
Procedure not usable below 15°C.



DIST to THR	2.0	3.0	4.0	5.0	6.0	7.0	8.0	9.0
ALTITUDE	700'	1020'	1340'	1660'	1980'	2300'	2620'	2930'



Gnd speed-Kts	70	90	100	120	140	160	HIALS-II PAPI PAPI	210 KT MAX	ASMOM ↑
Descent Angle 3.00°	372	478	531	637	743	849			

MAP at KAVOV

Standard STRAIGHT-IN LANDING RWY 34L				CIRCLE-TO-LAND			
LNAV/VNAV DA(H) 370' (357')		LNAV MDA(H) 570' (557')		LNAV/VNAV DA(H) 370' (357')		LNAV MDA(H) 570' (557')	
ALS out		ALS out		ALS out		ALS out	

PANS OPS	A				Max Kts	MDA(H)	VIS
	B				100	620' (607')	1600m
	C	RVR 900m	RVR 1600m	RVR 1800m	135	620' (607')	1600m
	D			CMV 2500m	180	1240' (1227')	2400m
					205	1240' (1227')	3600m

After LNAV apch: VIS 2500m.

CHANGES: D-ATIS added. Note. Altitude at waypoints.

D-ATIS	DOHA RADAR (APP)	DOHA Approach	DOHA Director (APP)	HAMAD Tower West	HAMAD Tower East	Ground West	Ground East
126.85	121.1	119.72	119.4	118.02	118.52	121.67	121.87

BRIEFING STRIP™

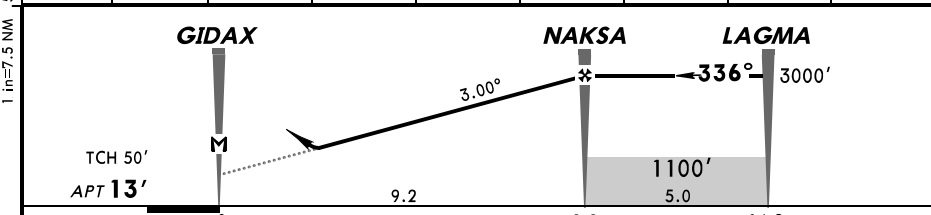
RNAV	Final Apch Crs 336°	Procedure Alt NAKSA 3000' (2987')	LNAV/VNAV DA(H) 310' (297')	Apt Elev 13'	2100' MSA ARP
------	-------------------------------	--	---------------------------------------	---------------------	----------------------

MISSED APCH: Climb STRAIGHT AHEAD to OBTIM. Turn RIGHT to GOMBO, then turn RIGHT to GENOT. Climb and maintain 4000'. MAX 230 KT.

Alt Set: hPa Apt Elev: 0 hPa Trans level: FL 150 Trans alt: 13000'
Procedure not usable below 15°C.



DIST to THR	2.0	3.0	4.0	5.0	6.0	7.0	8.0	9.0
ALTITUDE	700'	1020'	1340'	1660'	1980'	2300'	2620'	2930'



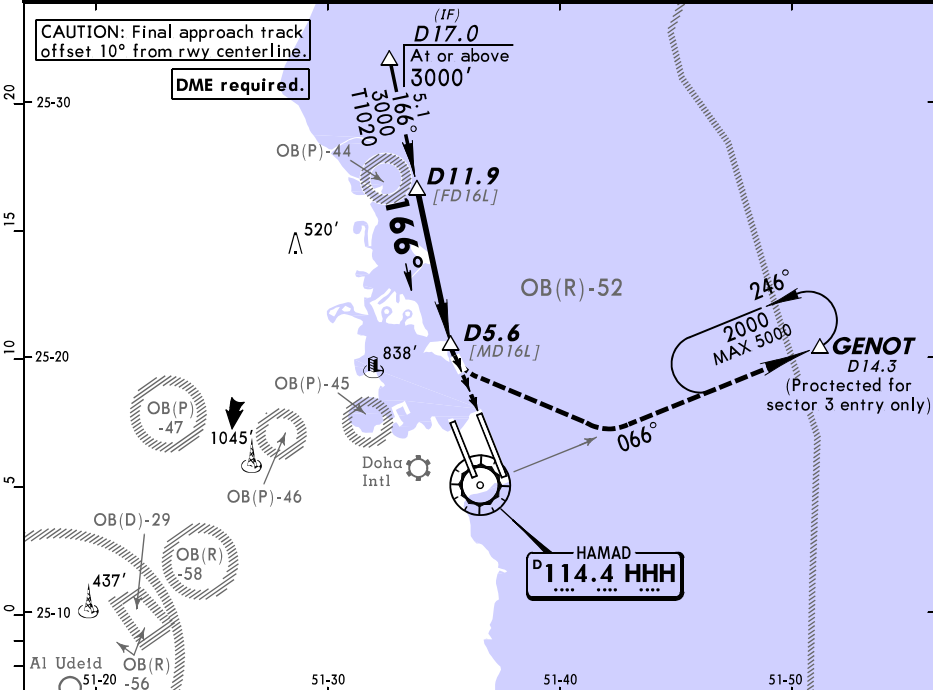
Gnd speed-Kts	70	90	100	120	140	160	HIALS-II PAPI PAPI	230 KT OBTIM MAX	↑
Descent Angle 3.00°	372	478	531	637	743	849			

MAP at GIDAX Standard STRAIGHT-IN LANDING RWY 34R CIRCLE-TO-LAND

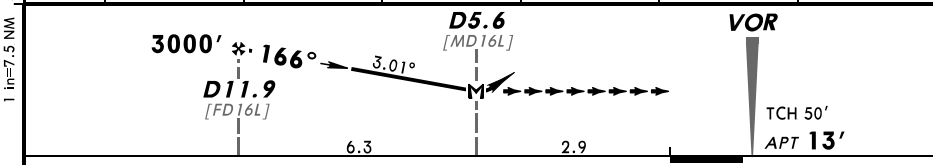
A	LNAV/VNAV DA(H) 310' (297')	LNAV MDA(H) 410' (397')	Max Kts	MDA(H)	VIS
	ALS out	ALS out			
B			135	620' (607') 2	1600m
C	RVR 750m 1	RVR 1400m	180	1240' (1227')	2400m
D			205	1240' (1227')	3600m

1 With TDZ, CL and HUD: RVR 650m. 2 After LNAV apch: VIS 1800m.

D-ATIS	DOHA RADAR (APP)	DOHA Approach	DOHA Director (APP)	HAMAD Tower West	HAMAD Tower East	Ground West	Ground East	
126.85	121.1	119.72	119.4	118.02	118.52	121.67	121.87	
VOR HHH 114.4	Final Apch Crs 166°	Minimum Alt D11.9 3000' (2987')	MDA(H) 1020' (1007')	Apt Elev	13'	2100'		
MISSED APCH: Turn LEFT onto R-066 to GENOT and hold. Climb and maintain 4000'. Do not turn before MAP. MAX 230 KT.								
Alt Set: hPa		Apt Elev: 0 hPa		Trans level: FL 150		Trans alt: 13000'		MSA HHH VOR



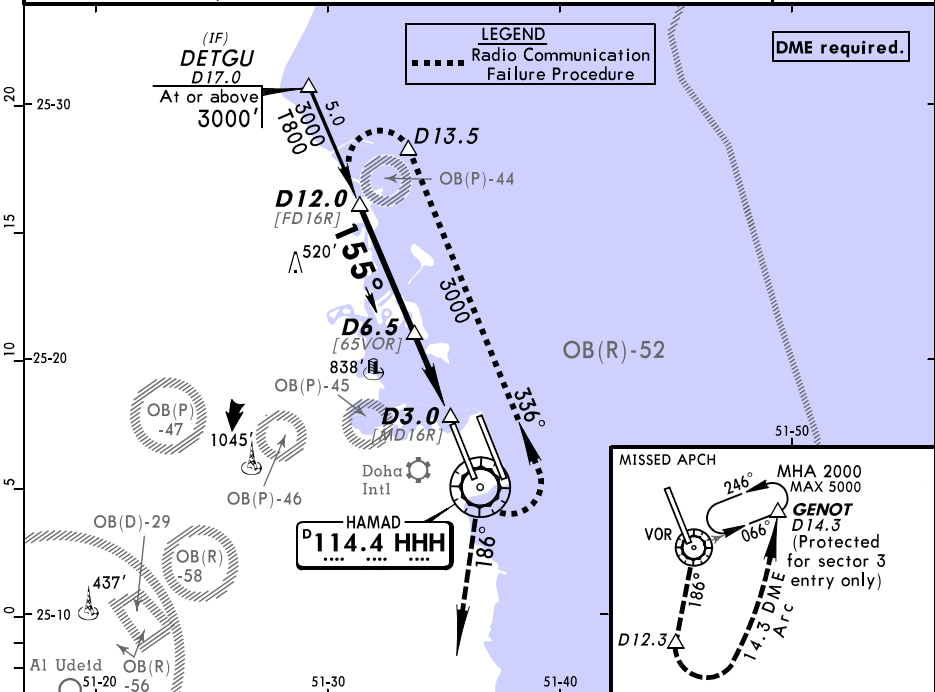
HHH DME	11.0	10.0	9.0	8.0	7.0	6.0
ALTITUDE	2730'	2420'	2100'	1780'	1460'	1140'



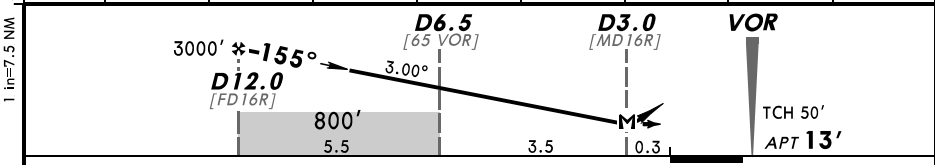
Gnd speed-Kts	70	90	100	120	140	160	HIALS-II PAPI	230 KT	GENOT	HHH 114.4
Descent Angle	3.01°	373	479	532	639	745				
MAP at D5.6								MAX	LT	on R-066

Standard				STRAIGHT-IN LANDING RWY 16L				CIRCLE-TO-LAND			
MDA(H) 1020' (1007')											
A				ALS out				Max Kts			
B				CMV 4100m				100			
C				CMV 4900m				135			
D								180			
								205			
								1020' (1007') 4900m			
								1240' (1227') 4900m			

D-ATIS	DOHA RADAR (APP)	DOHA Approach	DOHA Director (APP)	HAMAD Tower		Ground	
126.85	121.1	119.72	119.4	West 118.02	East 118.52	West 121.67	East 121.87
VOR HHH 114.4	Final Apch Crs 155°	Procedure Alt D12.0 3000' (2987')	MDA(H) 410' (397')	Apt Elev 13'		2100'	
MISSED APCH: Climb STRAIGHT AHEAD until VOR turn RIGHT onto R-186. At D12.3 turn LEFT to intercept 14.3 DME Arc anti-clockwise to GENOT and hold. Climb and maintain to 2000'. Climb in the hold to 3000'. MAX 230 KT.							
Alt Set: hPa		Apt Elev: 0 hPa		Trans level: FL 150		Trans alt: 13000'	
							MSA HHH VOR



HHH DME	11.0	10.0	9.0	8.0	7.0	6.0	5.0	4.0
ALTITUDE	2710'	2400'	2080'	1760'	1440'	1120'	810'	490'



Gnd speed-Kts	70	90	100	120	140	160	HIALS-II PAPI PAPI 230 KT MAX HHH 114.4
Descent Angle	3.00°	372	478	531	637	743	
MAP at D3.0							

Standard				STRAIGHT-IN LANDING RWY 16R				CIRCLE-TO-LAND				
MDA(H) 410' (397')								ALS out				
PANS OPS	A							Max Kts.	MDA(H)		VIS	
	B							100	620' (607')		1800m	
	C	RVR 1100m			RVR 1800m			135	1240' (1227')		2400m	
	D							180	1240' (1227')		3600m	

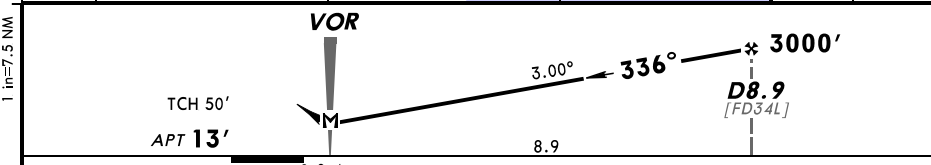
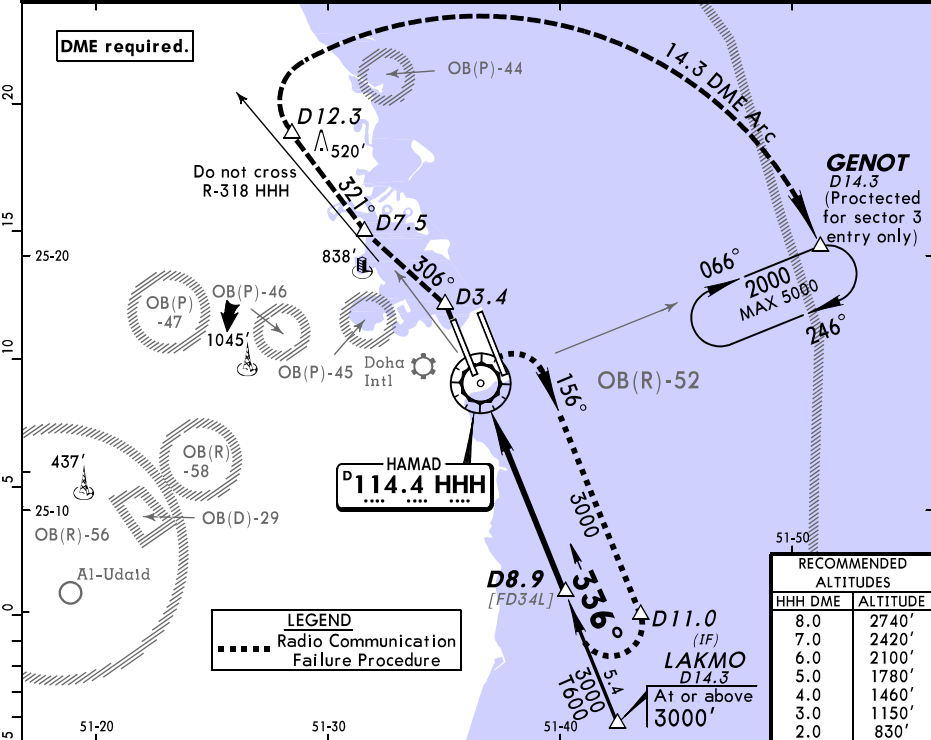
D-ATIS	DOHA RADAR (APP)	DOHA Approach	DOHA Director (APP)	HAMAD Tower		Ground	
126.85	121.1	119.72	119.4	West 118.02	East 118.52	West 121.67	East 121.87

BRIEFING STRIP™

VOR HHH 114.4	Final Apch Crs 336°	Minimum Alt D8.9 3000' (2987')	MDA(H) 530' (517')	Apt Elev 13'	2100'
----------------------------	----------------------------------	--	------------------------------	---------------------	-------

MISSED APCH: Climb STRAIGHT AHEAD to D3.4, then turn LEFT onto 306° to intercept R-321 (do not cross R-318 HHH) crossing D7.5 at or above 2500'. At 12.3 turn RIGHT to intercept the 14.3 DME Arc at 5000'. Proceeding clockwise to GENOT and hold. Climb and maintain 5000. MAX 230 KT.

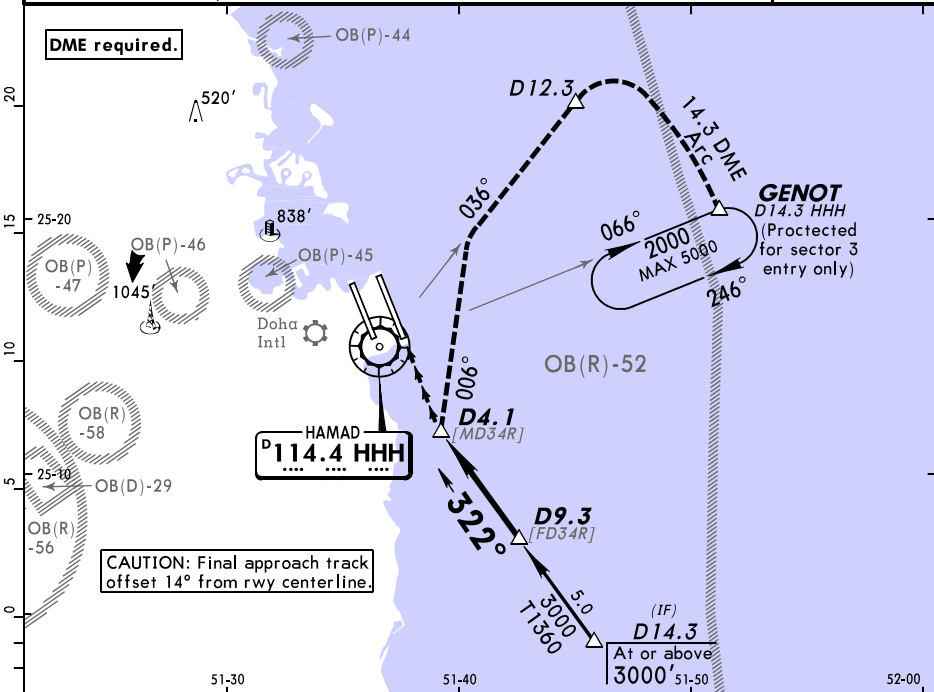
Alt Set: hPa	Apt Elev: 0 hPa	Trans level: FL 150	Trans alt: 13000'	MSA HHH VOR
--------------	-----------------	---------------------	-------------------	-------------



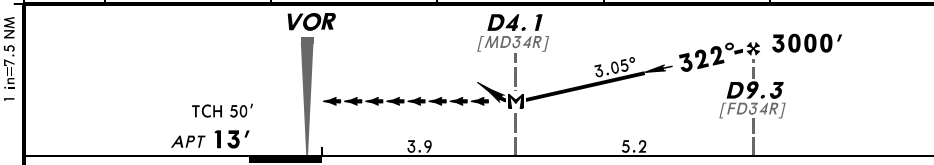
Gnd speed-Kts	70	90	100	120	140	160	HIALS-II PAPI PAPI	230 KT MAX	D3.4 ↑
Descent Angle 3.00°	372	478	531	637	743	849			

Standard STRAIGHT-IN LANDING RWY 34L				CIRCLE-TO-LAND			
MDA(H) 530' (517')				ALS out			
PANS OPS	A	RVR 1600m	CMV 2400m	Max Kts	MDA(H)	VIS	
	B			100	620'	(607')	2400m
	C			135	1240'	(1227')	2400m
	D			180	1240'	(1227')	3600m

D-ATIS	DOHA RADAR (APP)	DOHA Approach	DOHA Director (APP)	HAMAD Tower West	HAMAD Tower East	Ground West	Ground East
126.85	121.1	119.72	119.4	118.02	118.52	121.67	121.87
VOR HHH 114.4	Final Apch Crs 322°	Minimum Alt D9.3 3000' (2987')	MDA(H) 1360' (1347')	Apt Elev 13'		2100'	
MISSED APCH: Turn RIGHT heading 006° to intercept R-036. At D12.3 turn RIGHT to intercept 14.3 Arc clockwise to GENOT and hold. Climb and maintain 4000'. Do not turn before MAP. MAX 230 KT.							
Alt Set: hPa		Apt Elev: 0 hPa		Trans level: FL 150		Trans alt: 13000'	



HHH DME	5.0	6.0	7.0	8.0	9.0
ALTITUDE	1650'	1960'	2280'	2600'	2920'



Gnd speed-Kts	70	90	100	120	140	160	HIALS-II PAPI PAPI	230 KT MAX	RT onto 066°
Descent Angle	3.05°	378	486	540	648	755			
MAP at D4.1									

Standard				STRAIGHT-IN LANDING RWY 34R				CIRCLE-TO-LAND			
MDA(H) 1360' (1347')								ALS out			
CMV 5000m								Max Kts			
A								100			
B								135			
C								180			
D								205			
								MDA(H) VIS			
								1360' (1347') 5000m			