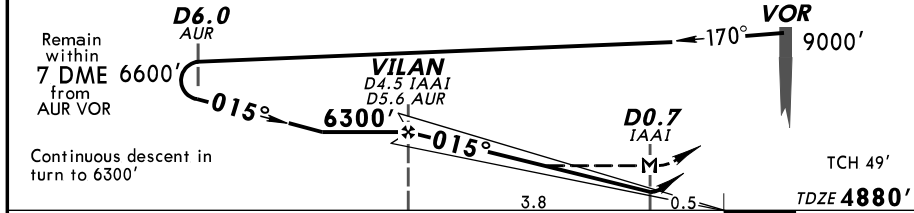
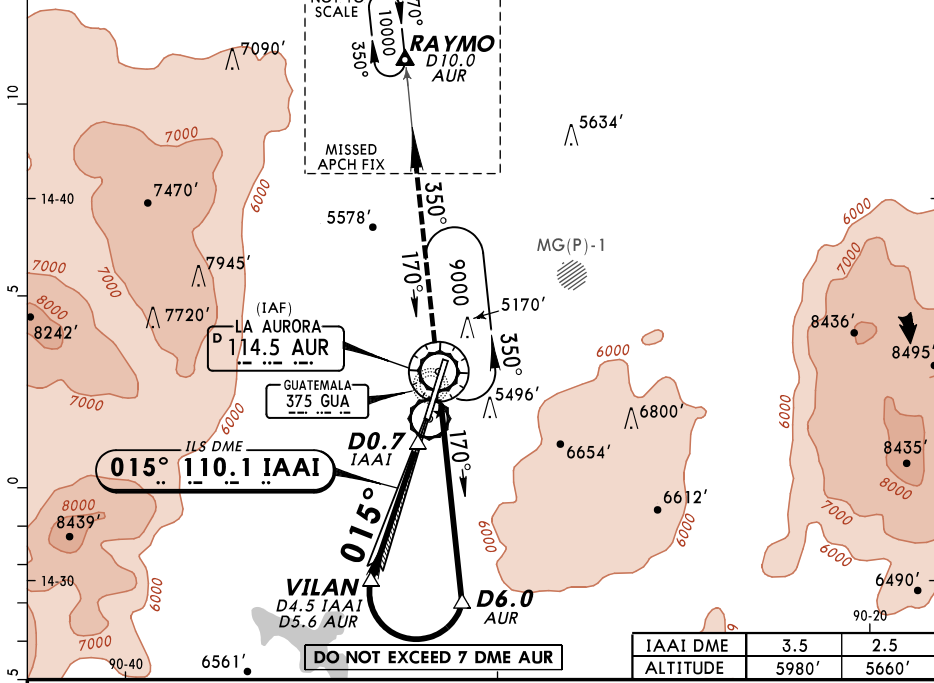


ATIS 127.65		LA AURORA Approach (*R) 119.3		LA AURORA Tower 118.1		Ground 121.9	
LOC IAAI 110.1	Final Apch Crs 015°	Minimum Alt VILAN 6300' (1420')	ILS DA(H) 5100' (220')	Apt Elev 4952' TDZE 4880'			

MISSED APCH: Climb on course of 015° until reaching AUR VOR, then LEFT turn outbound on AUR VOR R-350 and continue climbing until reaching 10000' at RAYMO D10.0 AUR and hold. Request instructions from APP.

Alt Set: INCHES Trans level: FL 200 Trans alt: 19000' MSA AUR VOR



Gnd speed-Kts	70	90	100	120	140	160	SSALS	015°	AUR	AUR	10000'
Gs	3.00°	372	478	531	637	743	REIL PAPI	↑	114.5	LT	114.5
MAP at D0.7 IAAI											

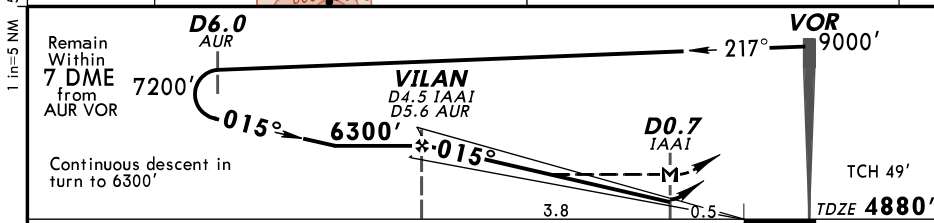
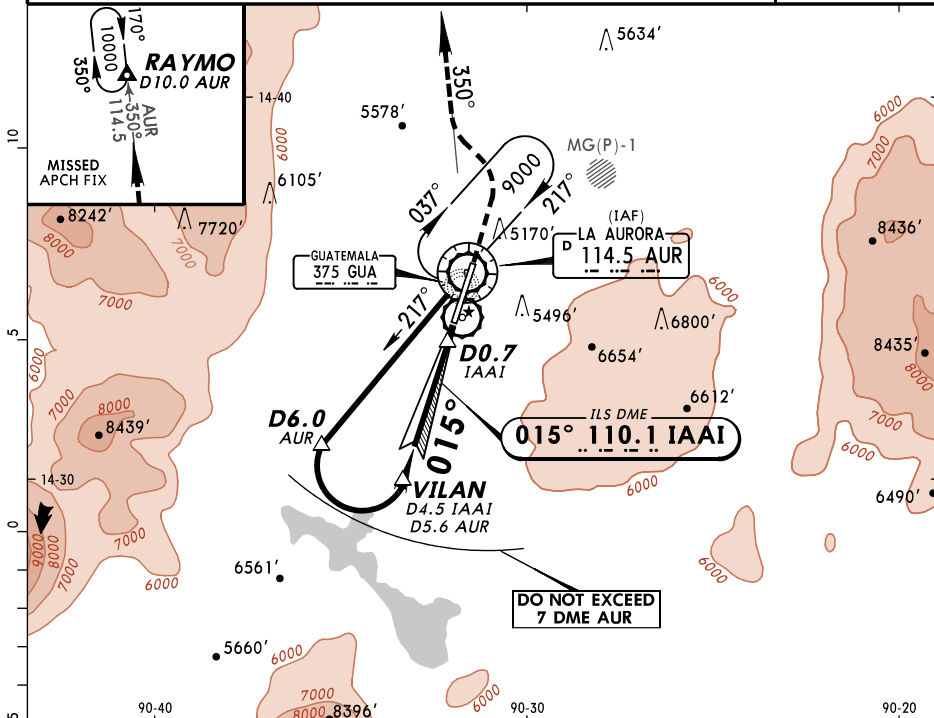
STRAIGHT-IN LANDING RWY 01				CEILING REQUIRED		CIRCLE-TO-LAND	
ILS DA(H) 5100' (220')		LOC (GS out) MDA(H) 5340' (460')		TERPS Not Authorized East of Rwy			
FULL	ALS out	ALS out	ALS out	Max Kts	MDA(H)	CEIL-VIS	
250' - 3/4		500' - 1		90	5460' (508')	600' - 1	
				120	5460' (508')	600' - 1 1/2	
				140	5460' (508')	600' - 1 1/2	
				165	5680' (728')	800' - 2 1/4	

MGGT/GUA
LA AURORA INTL

14 SEP 12 (11-2)

JEPPESSEN GUATEMALA CITY, GUATEMALA
ILS DME A Rwy 01

ATIS 127.65		LA AURORA Approach (*R) 119.3		LA AURORA Tower 118.1		Ground 121.9	
LOC IAAI 110.1	Final Apch Crs 015°	Minimum Alt VILAN 6300' (1420')	ILS DA(H) 5100' (220')	Apt Elev 4952' TDZE 4880'			
<p>MISSED APCH: Climb on course of 015° until reaching D2.0 north of AUR VOR, then LEFT turn outbound on AUR VOR R-350 and continue climbing until reaching 10000' at RAYMO D10.0 AUR and hold. Request instructions from APP.</p>							
Alt Set: INCHES		Trans level: FL 200		Trans alt: 19000'		MSA AUR VOR	



Gnd speed-Kts	70	90	100	120	140	160	SSALS	015°	D2.0 AUR	LT	AUR	10000'
GS	3.00°	372	478	531	637	849	REIL PAPI	↑			114.5	R-350
MAP at D0.7 IAAI												

STRAIGHT-IN LANDING RWY 01				CEILING REQUIRED	CIRCLE-TO-LAND	
ILS DA(H) 5100' (220')		LOC (GS out) MDA(H) 5340' (460')		Not Authorized East of Rwy		
FULL		ALS out		Max Kts	MDA(H)	CEIL-VIS
A		250' - 3/4		90	5460' (508')	600' - 1
B				120	5460' (508')	600' - 1 1/2
C				140	5460' (508')	600' - 1 1/2
D				165	5680' (728')	800' - 2 1/4

CHANGES: Procedure title, bearings, TDZE, missed approach.

© JEPPESSEN, 1999, 2012. ALL RIGHTS RESERVED.

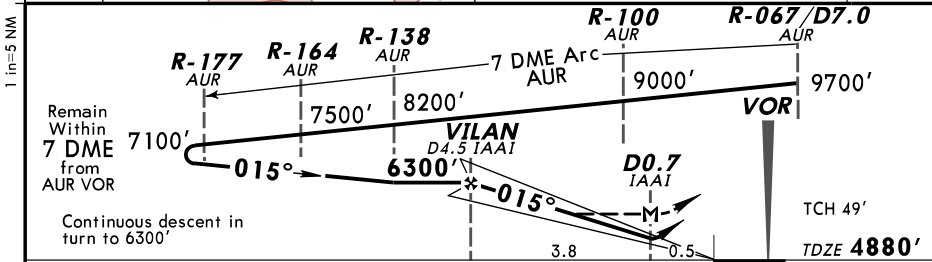
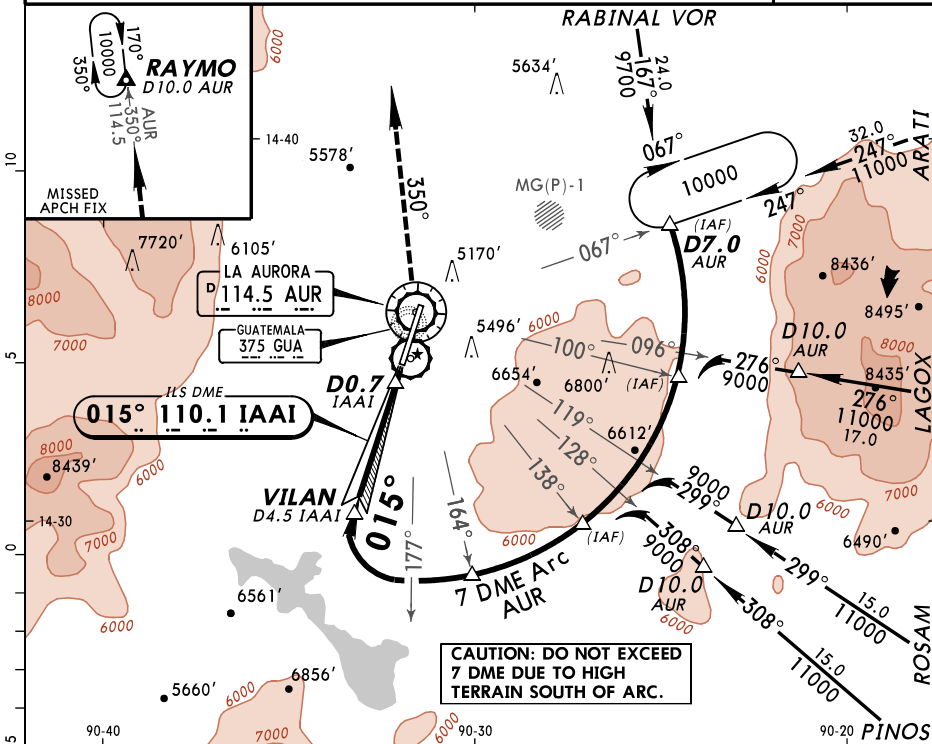
MGGT/GUA
LA AURORA INTL

JEPPesen 14 SEP 12 (11-3)

GUATEMALA CITY, GUATEMALA
ILS DMÉ Arc Rwy 01

ATIS 127.65		LA AURORA Approach (*R) 119.3		LA AURORA Tower 118.1	Ground 121.9
LOC IAAI 110.1	Final Apch Crs 015°	Minimum Alt VILAN 6300' (1420')	ILS DA(H) 5100' (220')	Apt Elev 4952' TDZE 4880'	

MISSED APCH: Climb on course of 015° until reaching AUR VOR, then LEFT turn outbound on AUR VOR R-350 and continue climbing until reaching 10000' at RAYMO D10.0 AUR and hold. Request instructions from APP.
 Alt Set: INCHES Trans level: FL 200 Trans alt: 19000' MSA AUR VOR



Gnd speed-Kts	70	90	100	120	140	160	SSALS REIL PAPI	015°	AUR	LT	AUR	10000'
Gs	3.00°	372	478	531	637	849		↑	114.5	↑	114.5	R-350

STRAIGHT-IN LANDING RWY 01				CEILING REQUIRED		CIRCLE-TO-LAND	
ILS DA(H) 5100' (220')		LOC (GS out) MDA(H) 5340' (460')		Not Authorized East of Rwy			
FULL		ALS out		Max Kts	MDA(H)	CEIL-VIS	
CEILING-VISIBILITY		ALS out		90	5460' (508')	600' - 1	
250' - 3/4		500' - 1		120	5460' (508')	600' - 1 1/2	
		500' - 1 1/2		140	5460' (508')	600' - 1 1/2	
				165	5680' (728')	800' - 2 1/4	

CHANGES: Procedure bearings, TDZE.

© JEPPESEN, 1999, 2012. ALL RIGHTS RESERVED.