



# Jeppesen Required Navigation Performance (RNP)

Airlines need a proven partner that can provide comprehensive support as they implement Required Navigation Performance operations.



## **Western Hemisphere**

303.328.4395

E-mail: [airlineservices@jeppesen.com](mailto:airlineservices@jeppesen.com)

## **Eastern Hemisphere**

+49 6102 50 8180

E-mail: [fra-casales@jeppesen.com](mailto:fra-casales@jeppesen.com)

[www.jeppesen.com](http://www.jeppesen.com)

# Jeppesen Required Navigation Performance (RNP)

## The Jeppesen Required Navigation Performance Program

Jeppesen can help you chart the most economical course to implement RNP operations. We provide a complete program, to include Federal Aviation Authority (FAA) qualified AC90-101 consultants, flight procedure design that takes maximum advantage of your fleet and analysis of your fleet missions and route structure to map and optimize RNP implementation strategy.

### RNP operations offer:

- Enhanced flight safety during all phases via stable 3-D flight paths, quiet cockpit
- Improved access in reduced ceiling and visibility
- Improved access to terrain-challenged airports
- Enhanced reliability, repeatability, predictability
- Increased all-weather schedule reliability
- Closely-spaced parallel routes for improved departure and approach throughput
- Terminal airspace redesign for efficiency
- Reduced flight path lengths, more direct routing
- Flexible wind-optimal and great circle routes.
- Green procedures that reduce fuel use, emissions and noise

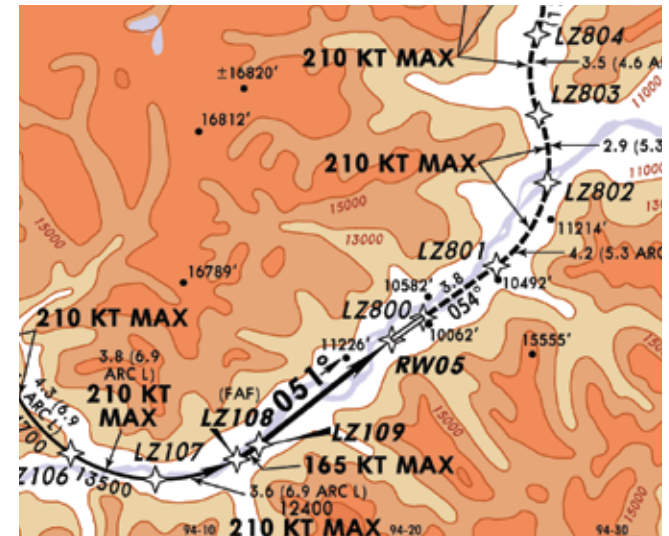


## A single point of contact for end-to-end RNP implementation

Jeppesen brings its world-renowned capabilities to give you a thoroughly integrated RNP implementation program. We will work with you to identify the markets and airplanes in your fleet that will provide the greatest return on your RNP investment. We will develop an implementation project plan that will produce the quickest operational improvement while ensuring optimum revenue throughout the project. We will manage all phases of the implementation project from equipage to include Federal Aviation Authority (FAA) and Civil Aviation Authority (CAA) coordination for approval worldwide.

### Our services include:

- RNP readiness assessment to determine current status and potential
- Step-by-step guidance, as an FAA qualified consultant to smoothly bring your company through the regulatory framework to operational approval
- Design, validation, test, coding, and delivery of procedures
- OEM coordination to develop avionics configuration need
- OEM coordination to provide modifications, certification, op specs and manual revisions
- Supplier and contractor service management for your project
- Pilot and Dispatch training program development
- RNP procedure/data comparison/validation
- RNP procedure delivery integrated into NavData® files



### Aircraft Performance Enhancements

At your request, Jeppesen can help coordinate aircraft performance enhancements to take full advantage of RNP operations and further increase takeoff weights at departure airports to include:

- Engine thrust rating increase for applicable aircraft/engine combinations.
- Increased time at takeoff thrust for some aircraft/engine combinations.
- Airport by airport, fleet by fleet RNP operation cost/benefit analysis