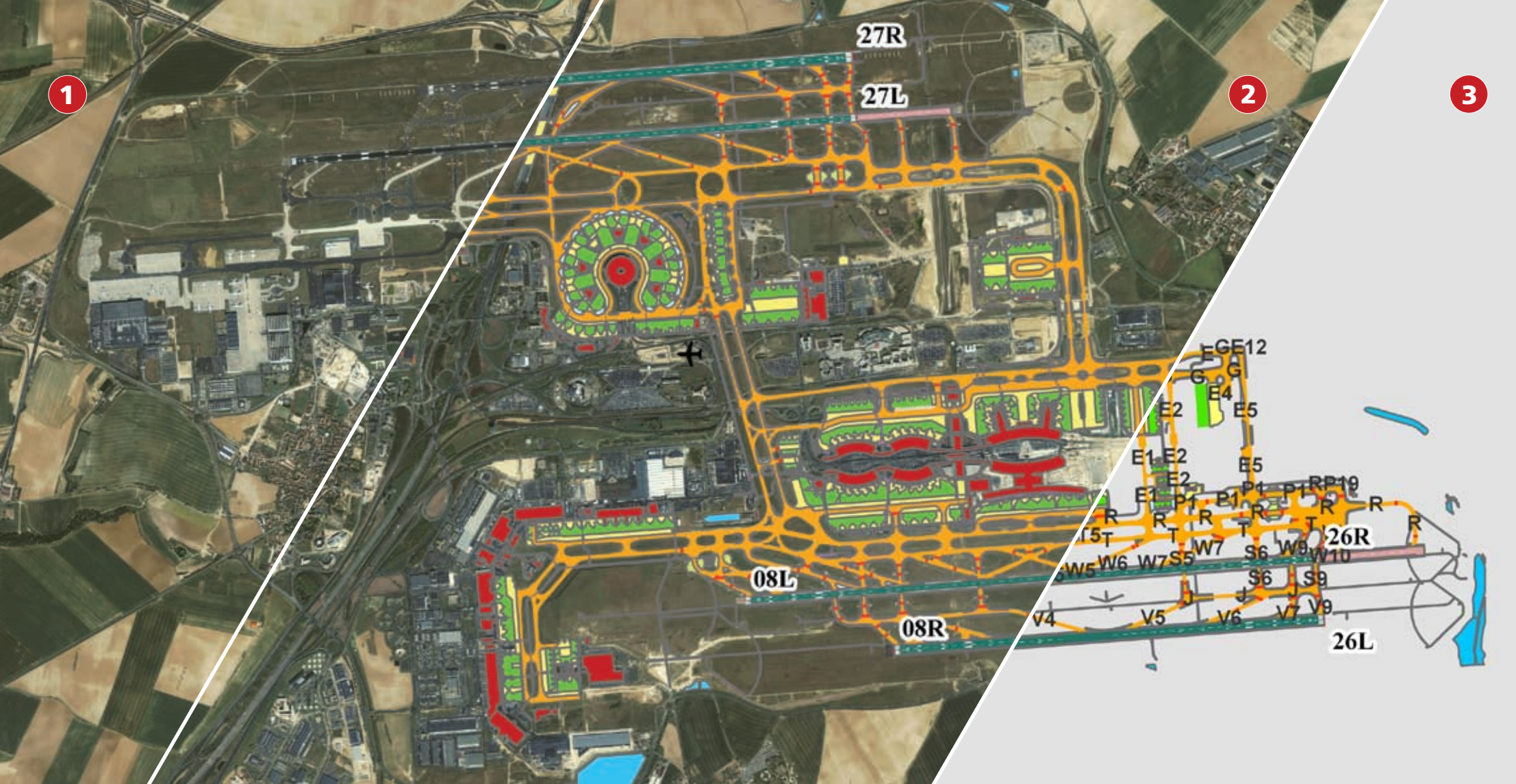


Airport Mapping Database

Jeppesen, the global leader in aviation information, applies proven expertise and resources to enhance safety and operational efficiency on the ground.





The Big Picture

Jeppesen's Airport Mapping Data delivers more detailed and dynamic information through a unique data layering approach:

- 1 First, a satellite image is captured over the airport and geo-referenced with the use of surveyed ground control points.
- 2 Then feature classes are digitized from the geo-referenced image. These features consist of runways, taxiways, aprons, shoulders, buildings, etc. (See RTCA DO-272/EUROCAE ED-99 for all the supported AMDB feature classes.)
- 3 Next, detailed attributes are added to the features based on image interpretation from Jeppesen's internal airport databases and from our navigation charts.

Finally, all created data is subjected to rigorous validation including quality assurance and control procedures.

The Jeppesen AMDB includes 34 distinct feature sets, 10 of which are highlighted here.

- | | |
|--|--------------------|
| Apron | Taxiway Identifier |
| Service Road | Taxiway Segment |
| Buildings (Vertical Polygon Structure) | Stopway |
| Parking Stand Areas | Runway |
| Stop Bar | Water |



Jeppesen has landed!

Challenge Ensuring safety and efficiency on the ground is a complex and constant challenge for airports around the world. It requires the precise coordination of a diverse range of activities which can only be achieved through reliable access to accurate, timely and high-quality airport information.

Solution Jeppesen provides the most complete, current and time-tested database of worldwide aviation information. For more than 70 years Jeppesen has been the leading provider of high-quality aeronautical information solutions to pilots and other aviation professionals around the globe. We are now applying the same expertise and proven resources to support airport/ground and training solutions and applications through our comprehensive Geographical Information Systems (GIS) Airport Mapping Database (AMDB).



Jeppesen AMDB provides clear advantages over alternative solutions. For example, CAD and As-Built diagrams do not provide the geospatial accuracy and intelligent data that are inherent with Jeppesen AMDB—and which are now required for new airport and aeronautical applications.

In addition, Jeppesen AMDB is geo-corrected to an earth-centered reference frame, eliminating the need to rely on local reference systems.

Equipped with Jeppesen AMDB, your airport applications and services can provide a more complete overview of on-the-ground information and activity, allowing for more efficient surface movement coordination and enhanced airport safety through improved situational awareness.

The Jeppesen Advantage

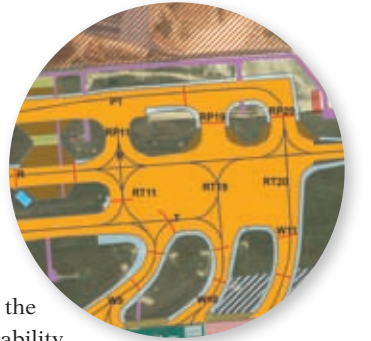
Jeppesen maintains the industry's most rigorous validation procedures and revision schedules to ensure the accuracy, timeliness and reliability of our airport mapping database. In addition, we employ a dedicated team of experienced professionals to monitor, verify and communicate modifications to the geospatial dataset. This commitment to excellence allows us to deliver higher-quality information which consistently

meets—and often exceeds—all government and industry standards. Jeppesen's **ISO 9001:2000 System Certification** is routinely audited to ensure continued maintenance of our high standards.

At Jeppesen, we also continually pursue opportunities to enhance our data and deliver additional value-added services that contribute to even greater safety and efficiency on the ground. In addition, we continually identify and explore new ways to expand our airport solution offerings to support your current and evolving needs.

Jeppesen AMDB puts the world's leading aeronautical information to work for you. Our comprehensive database works in conjunction with your airport applications and systems, supplying a wide range of fully integrated information. This comprehensive information allows you to easily and cost-effectively enhance the capabilities of your ground-based systems, without diverting valuable resources from your organization's core competencies. Jeppesen also performs routine database maintenance and updates to ensure you are working with the latest information.

Take A Closer Look The Jeppesen AMDB can be provided in ESRI™ shapefile format for DO-272/ED-99 and in XML data exchange format for DO-291/ED-119. Please request a copy of our AMDB white paper for more detailed information.



Get Jeppesen On Board Your Airport Systems!

Jeppesen is already on board the largest commercial airlines in the world. Now you have the opportunity to put this world-class information to work in your airport systems.

To learn more about the Jeppesen Airport Mapping Database contact one of our representatives today!

Western Hemisphere

800.353.2108 | 303.328.4422 | FAX 303.328.4114

E-mail: airlineservices@jeppesen.com

Eastern Hemisphere

+49 6102 5070 | FAX +49 6102 508283

E-mail: FRA-CASales@jeppesen.com

www.jeppesen.com

