

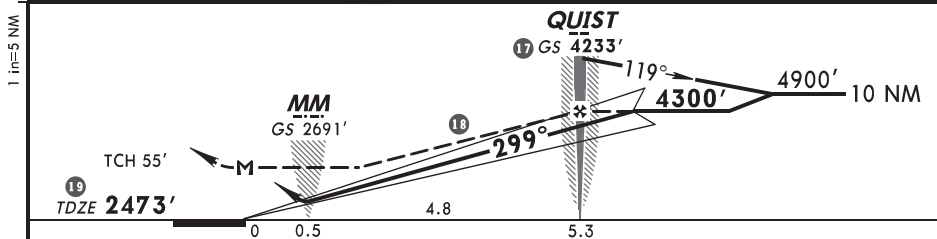
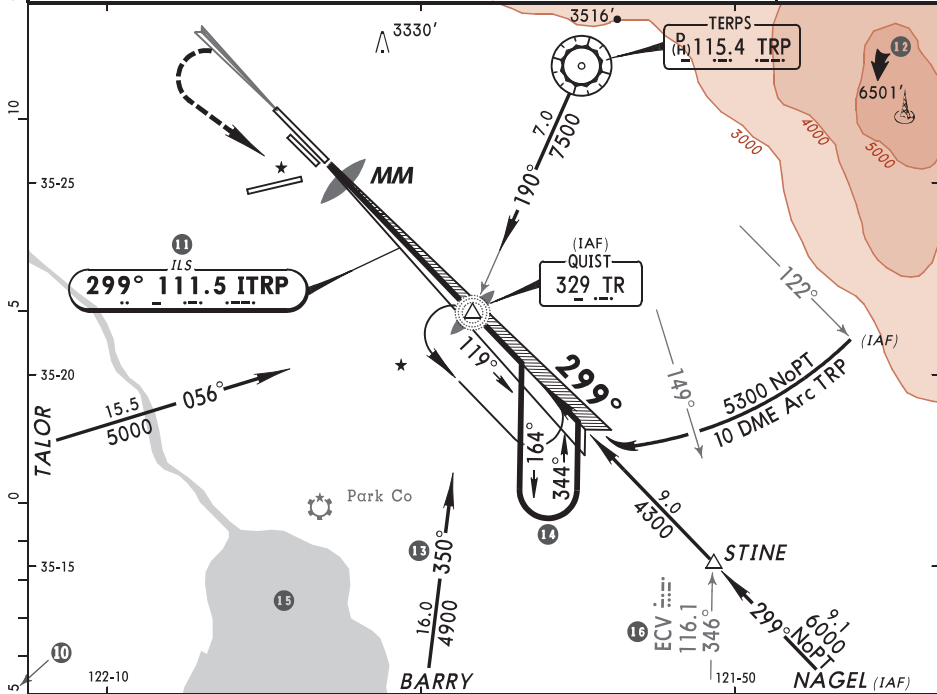
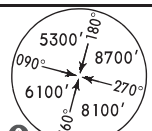
KTRP/TRP LION INTL 4

JEPPESEN 3

DATE **(11-1)** Eff 4 Aug

1 TERPS, CALIF
2 ILS Rwy 30R

BRIEFING STRIP™	D-ATIS Arrival	LION Approach (R)	LION Tower	Ground
	5 115.4	119.5	118.7	121.9
6	LOC ITRP 111.5	Final Apch Crs 299°	GS QUIST 4233' (1760')	ILS DA(H) 2673' (200')
			Apt Elev 2488'	TDZE 2473'
7	MISSED APCH: Climb to 4300' on NORTHWEST course of ITRP ILS within 10 NM, turn LEFT direct to QUIST LOM/INT and hold.			
8	Alt Set: INCHES	Trans level: FL 180	Trans alt: 18000'	9 MSA TR LOM



Gnd speed-Kts	70	90	100	120	140	160	ALSIF-I	4300' ITRP on NORTHWEST COURSE
	3.00°	377	484	538	646	753		
QUIST to MAP	5.3	4:33	3:32	3:11	2:39	2:16	1:59	

STRAIGHT-IN LANDING RWY 30R				CIRCLE-TO-LAND Not Authorized Northeast of Centerline Rwy 12L-30R	
20 ILS DA(H) 2673' (200')		21 LOC (GS out) MDA(H) 2840' (367')		25 Max Kts	
FULL		TDZ or CL out		ALS out	
A		22			90
B					120
C	RVR 18 or 1/2	RVR 24 or 1/2	RVR 40 or 3/4	RVR 24 or 1/2	140
D				RVR 40 or 3/4	165
				24	
				26	

CHANGES: Chart updated. 29

© JEPPESEN SANDERSON, INC., 1999, 2005. ALL RIGHTS RESERVED.