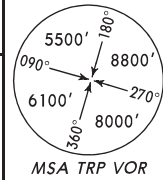
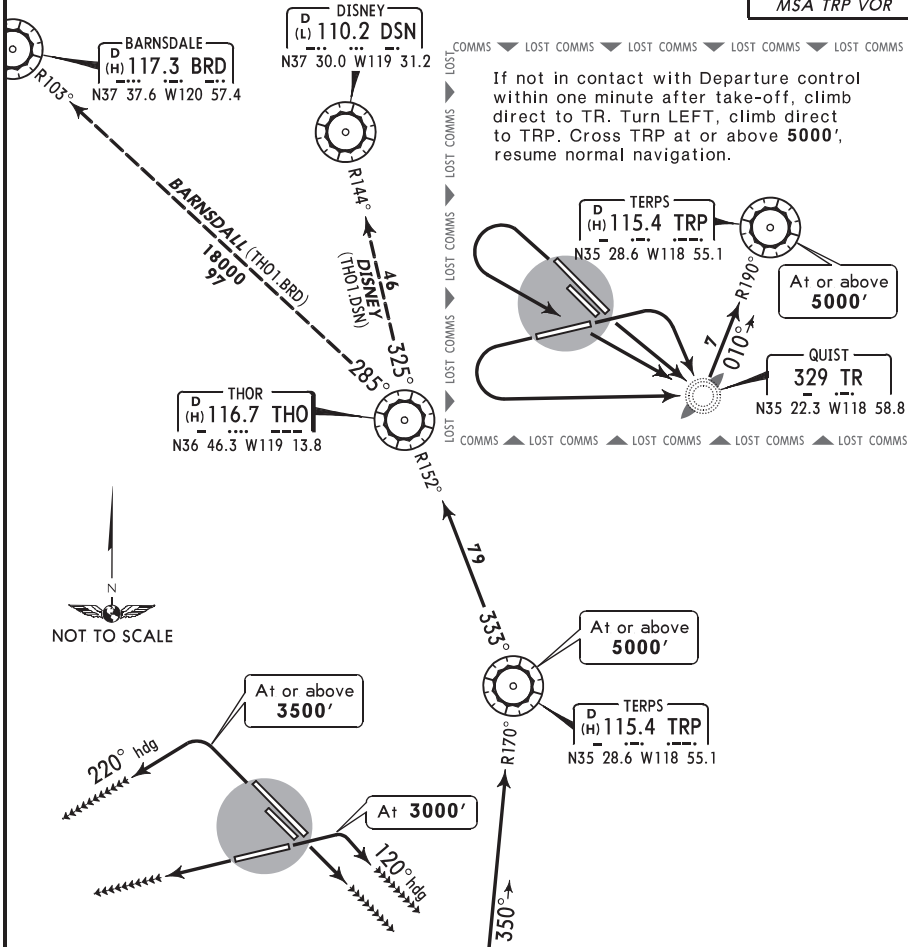


LION Departure (R) <b>118.4</b>	Apt Elev <b>2488'</b>	Trans level: FL 180	Trans alt: 18000'
------------------------------------	--------------------------	---------------------	-------------------



**THOR ONE DEPARTURE (THO1.THO)**



If not in contact with Departure control within one minute after take-off, climb direct to TR. Turn LEFT, climb direct to TRP. Cross TRP at or above 5000', resume normal navigation.



Direct distance from Lion Intl to:  
TRP **8 NM**

This SID requires a minimum climb gradient of 260' per NM to 5000'.

Gnd speed-KT	75	100	150	200	250	300
260' per NM	325	433	650	867	1083	1300

RWY	INITIAL CLIMB
6	Climb on runway heading, at 3000' turn RIGHT to a 120° heading for vector to TRP R-170.
12L/R	Climb on runway heading for vector to TRP R-170.
24	Climb on runway heading for vector to TRP R-170.
30L/R	Climb on runway heading, at or above 3500' turn LEFT to a 220° heading for vector to TRP R-170.
ROUTING	
Via TRP R-170 to TRP, then via TRP R-333 and THO R-152 to THO. Then via transition or assigned route.	