



IN THIS ISSUE

- **CLOSURES AND ADVISORIES**

Check out this section for the latest need-to-know info.
[Read more.](#)

- **GOING MOBILE**

We listened to your needs and launched some cool new apps and flight planning updates to support your life on the go. [Read more.](#)

- **TRIP PLANNING SYSTEM WEB PORTAL ENHANCEMENTS**

New tools and features to help us stay in touch with you and better manage all the critical documentation required for international flying.
[Read more.](#)

- **SAY HI TO MIKE**

Mike McCready recently joined Jeppesen as our Business and General Aviation Market Manager. He brings more than 13 years of expertise and passion to the job. [Read more.](#)

- **PREFERRED HANDLER SPOTLIGHT: TAHITI AIR SERVICE AND CONCIERGERY (TASC)**

French Polynesia is paradise on earth, and TASC is ready to meet any of your ground handling needs at Faa'a International Airport.
[Read more.](#)

- **EMPLOYEE SPOTLIGHT**

Belen Silva, Jeppesen Business Aviation Account Manager, talks about starting at Jeppesen as a part-time employee and working her way up to an Account Manager. [Read more.](#)

- **UPCOMING EVENTS**

[Read more.](#)



Visit Jeppesen at Booth 3004



Visit Jeppesen at Booth E234

SIGNIFICANT AIRPORT/RUNWAY CLOSURES

For further information contact Jeppesen International Trip Planning or visit www.jeppesen.com/TPS and click on the Bulletins link.

Accra, Ghana (DGAA) – Runway 21/03 will be closed daily between 2350-0600 local time through 07 November 2010.

Aruba, Netherland Antilles (TNCA) – Due to reduced traffic the airport is closed between 0400Z-1100Z through 31 December 2010. After hours arrangements can be made. If you are making a technical stop, it is recommended that Curacao (TNCC) be used instead.

Campinas-Sao Paulo, Brazil (SBKP) – Closed daily from 0430Z-0730Z between the following dates: 21-23 October 2010, 19-21 November 2010 and 16-18 December 2010

Cuzco, Peru (SPCO) – Due to continued work in progress on the ramp, overnights are not allowed through 20 December 2010.

Guayaquil, Ecuador (SEGU) – Closed daily from 0600Z-1000Z between the following dates: 05-09 October 2010 and 12-16 October 2010

Moscow Vnukovo, Russia (UUWW) – Airport closed daily between 2330Z-0200Z through 30 October 2010.

Novosibirsk, Russia (UNNT) – Expect closures daily between 0700Z-0900Z daily through 30 October 2010.

Puerto Vallarta, Mexico (MMPR) – Airport closed from 2300-0700 local time between now and 21 May 2011.

Rotterdam, Netherlands (EHRD) – Airport closed daily from 2100Z-0500Z between 4-8 October 2010 and 11-15 October 2010.

TRAVEL AND HEALTH ADVISORIES

The U.S. State Department's current list of travel warnings includes: Afghanistan, Algeria, Burundi, Central African Republic, Chad, Colombia, Cote d'Ivoire, Democratic Republic of Congo, Eritrea, Georgia, Guinea, Haiti, Iran, Iraq, Israel, the West Bank and Gaza, Kenya, Korea (Democratic People's Republic of), Lebanon, Mali, Mauritania, Mexico, Nepal, Niger, Nigeria, Pakistan, Philippines, Saudi Arabia, Somalia, Sudan, Uzbekistan, and Yemen.

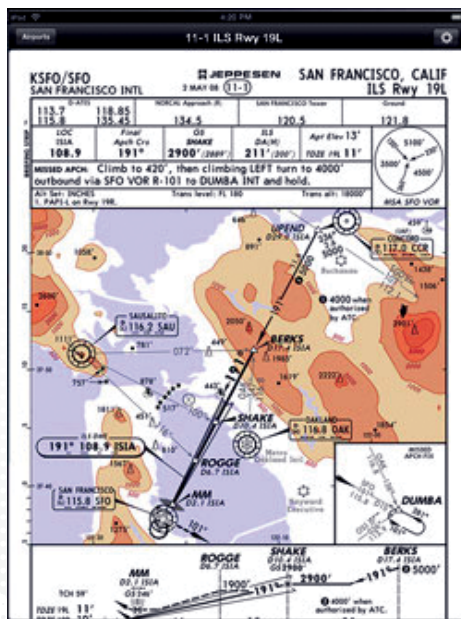
NOTABLE FUEL SHORTAGES & RESTRICTIONS

Asmara, Eritrea (HHAS) – No fuel available until further notice.

Brisbane, Australia (YBBN) – Operators requiring fuel need to be aware that the less expensive fuel supplier has only one tanker truck with a 4,200 >>

When developing solutions for the aviation marketplace, Jeppesen listens to customer needs to create applications and customized solutions that users are passionate about. Recently, we introduced several offerings that the aviation community has embraced with high interest.

At Oshkosh we created a lot of buzz with Jeppesen Mobile TC, our new iPad® app. When the iPad launched there was immediate interest from pilots who wanted to use the device as a chart viewer. In response to strong demand we fast-tracked development and put Jeppesen Mobile TC on the iPad App Store as a free download, allowing customers to search, view and update Jeppesen terminal charts on their iPads. The simplified design of the app is generating positive feedback. Many pilots agree that the 9.7-inch, LED-backlit iPad touch screen makes an excellent chart viewer.



The iPad makes an excellent chart viewer

Existing JeppView customers can access Jeppesen terminal charts through the new iPad app at no additional charge, using one of four available site keys provided with JeppView and NavSuite subscriptions. If all four subscription site keys are currently in use, an additional site key purchase would be required.



Zoom in and out using the touch screen

Simple, elegant user interface for searching airports

The Jeppesen Mobile TC app serves as an introduction for future offerings for the increasingly popular iPad. "Our new iPad application is designed for a very specific purpose, namely for searching and viewing terminal charts. We listened and responded to high customer demand for delivery," said Tim Huegel, Director, Jeppesen Aviation Portfolio Management. "We're excited that the cross-market appeal of this technology will lead to further development of Jeppesen services available for the iPad in the near future, as customers provide the specifics required to serve their mobile computing needs."

With Jeppesen Mobile TC pilots now have another tool for advancing toward a paperless operating environment. For more information on intended use, review the Application License Agreement at the Apple iPad App Store - www.apple.com/ipad/apps-for-ipad/. For more information about Jeppesen electronic chart subscriptions, check out www.JeppDirect.com. For more information on the Jeppesen Mobile TC iPad terminal chart application, please visit www.jeppesen.com/microsites/jeppesen-mobile-tc/.

Jeppesen is also developing several other mobile apps to stay in line with today's advancing technology. Jeppesen CrewAlert is a new app that is compatible with the iPhone®. Jeppesen CrewAlert provides fatigue risk management capabilities and makes it possible for pilots to scientifically assess their alertness for a schedule, with predicted or actual sleep patterns and personal settings taken into account. With the CrewAlert app, it becomes possible to experiment with different sleep strategies on a layover to see which would best fit the return flight. The Jeppesen CrewAlert app will be available this fall for purchase through the online Apple App Store.

In an effort to optimize the retail experience for our online customers using mobile devices, Jeppesen software engineers created the new JeppDirect mobile Web site, another touch point for busy customers to purchase both Jeppesen and Aviall products. JeppDirect mobile provides optimized views for smartphone Web browsers from many of the most popular handheld devices being used today, including iPhone, iPad, Android, BlackBerry, LG Ally and others. >>

While mobile apps have stirred tremendous interest recently, the introduction of **FliteStar version 9.5 with enhanced global weather data service** has been met with great anticipation, too.



FliteStar 9.5—flight planning with enhanced weather features

With FliteStar 9.5 users now have continuously updated weather information for improved situational awareness while flight planning. Weather data is presented through multiple customized graphical formats displayed according to FliteStar coverage area, user preference and flight plan. You get a dynamic graphical view of the weather environment in both enroute and profile views, reducing the need to switch between multiple screens. Jeppesen weather data now aligns with your FliteStar coverage area and weather download overlay displays are presented on enroute charts and are updated automatically through an Internet connection.



New chart time slider and weather legend

New features of FliteStar 9.5 include:

- A weather toolbar gives you the ability to display or close graphical elements, according to your preference
- An intuitive chart time slider feature allows you to view current and forecast weather for any period of time up to 72 hours in advance along your planned route
- A weather legend shows all currently displayed graphical weather elements

Jeppesen provides the only worldwide weather data source and combines current data from multiple sources, including NEXRAD mosaic data, and integrates critical icing and turbulence information.

Other weather elements include AIRMETs, SIGMETs, radar, lightning, surface analysis, METARs, icing, turbulence and wind data. An icing display bar allows you to formulate an ice-avoidance strategy and flight plan before leaving the ground.

“FliteStar version 9.5 allows our customers to view vital weather information in a new graphical format that is customized for the needs of individual users,” said Huegel. “FliteStar users can now display from zero to nine graphical weather elements simultaneously and are assured of receiving the same world-class, FAA-validated weather data from Jeppesen that they have come to expect for the past 25 years.”

Jeppesen integrates weather from multiple organizations, including the National Weather Service (NWS), the UK Met Office (UKMO), Unisys, Weather Decision Technologies (WDT) and WSI. Jeppesen employs system architecture that ensures data is being integrated, processed and available to you around the clock. We have been providing aviation weather to pilots and dispatchers since the early 1980's and we employ a staff of professional meteorologists who assist in generating many of the graphic maps, as well as provide personalized and custom forecasts.

FliteStar 9.5 product information

and pricing: The enhanced Jeppesen weather data service is now available automatically through three-time, 56-day or 28-day revision service. Cost depends on areas of coverage included. A one-time FliteStar version 9.5 update is available for those subscribers without revision services, starting at \$69. For more information on FliteStar 9.5, please visit the [Jeppesen FliteStar 9.5](#) page.

Introduction of mobile apps such as Jeppesen Mobile TC terminal chart application for the iPad, and FliteStar version 9.5 for flight planning with enhanced weather data are recent examples of aviation solutions that have been developed from strong customer demand and Jeppesen innovation. Jeppesen will continue this spirit of innovation while partnering with customers and the aviation industry to create navigation, operations, training and optimization solutions that customers are truly passionate about. ■

gallon capacity. If more fuel is required or if you are operating during peak commercial traffic periods (0600Z-0900Z and 1500Z-2100Z) and do not wish to wait, there is alternative, yet more expensive, fueling through Shell.

Entebbe, Uganda (HUEN) – No fuel available until further notice.

Maastricht, Netherlands (EHBK) – Airport fuel depot is undergoing construction work so fuel can only be delivered by truck. Make sure that your volume requirements are confirmed ahead of time. Larger uplifts should expect delays.

REGIONAL UPDATES

Daylight savings time changes: please note several countries, including Armenia, Israel, Jordan, Lebanon, Moldova, Russia and UK will end Daylight Savings Time in October so their local times will change. In November, additional locations, such as the Bahamas, Bermuda, Canada, Turks and Caicos, and United States, will also change. Please plan accordingly and double check time conversions.

Dominican Republic – The Civil Aviation Authority now requires all general aviation pilots to submit a copy of their pilot's license when filing a departure flight plan. They are also requesting the license number of the pilot in command to be listed in Item 18 of the ICAO flight plan. This is required for all airports within the Dominican Republic and adherence will prevent possible delays.

Iran – Please note that Iran Civil Aviation is no longer issuing overflight permits for private, business or cargo flights operating to or from Afghanistan. Commercial flights are still allowed.

Japan – Great news for operators to Tokyo! The Ministry of Land, Infrastructure, Transport and Tourism of Japan recently issued a press release about the opening of Tokyo International Airport (Haneda/RJTT) for business aviation beginning 31 October 2010. From this date forward, the following will apply:

- Airport will be operational for business aviation 24 hours a day
- Minimum of eight slots/day will be maintained for business aviation
- Maximum parking period will be seven days
- No advance notice period to obtain slots
- Nearby parking spot for passenger disembarking/embararking

This is an initial announcement and we will report more details as they become available. >>

Lebanon – Rafic Hariri International Airport (OLBA) will more than double its previous expansion plans, with work due to begin early next year in order to meet growing demand. And a second international airport, Rene Mouawad (OLKA), will open in the north of Lebanon. Today OLKA is primarily utilized by the military, but only part of its runway is usable. OLKA will see a rebuilding of the runway plus a free zone area. In the meantime, work on the expansion of OLBA could start as early as January 2011, with construction expected to last three years. The new construction is likely to be completed in stages to enable growth. Runway 17/35 will be completely refurbished, and plans are in place to build additional hangars on the airport.

New Zealand – There will be an increase in the Government Goods and Services Tax (GST) from 12.5% to 15% effective 01 October 2010. This will affect all ATC Air Navigation charges, ground handling and associated airport services, fees and charges. GST is not charged on fuel supplied to aircraft departing New Zealand for an international destination. Fuel supplied for all domestic internal flights will be assessed GST.

Russia – Earlier this year, the Russia CAA advised they were looking into the possibility of abolishing the need for permits for general aviation flights in Russia. It was thought this would primarily be for general aviation Russian operators (most likely Russian registered aircraft), but it does appear this could extend to all general aviation flights. There is no official word, however, as to if or how business aviation will benefit from this. Regardless, the CAA is hoping to find improvements to the system, which would allow an almost immediate response such as ‘flight confirmed’ or ‘flight denied’—a huge improvement over the current system.

There have been organizational changes to the Russian CAA structure. The control for the duties of the Federal Air Navigation Authority has been transferred to the Federal Air Transport Agency. At the moment we are advised that the processes and personnel are all the same as before, however, from a red tape point-of-view, in theory this change should make it easier to obtain permissions as there is one less department to process requests. It is expected that further changes will occur.

South Africa – CAA South Africa has imposed a new rule that restricts all aircraft from turning around and parking nose out. As a result, all flights will need to be pushed out of the parking bays on departure. Airports affected are FALE, FAJS and FACT. >>

NEW FEATURES ADDED TO JEPPESEN'S TRIP PLANNING SYSTEM WEB PORTAL

As part of continually improving how we provide you with useful and timely information, and the tools to best utilize that information, we have created new functionality for our Trip Planning System Web Portal. Enhancements include:

- The ability for operators to manage their personnel information
- Electronically submit trip-related documentation
- Request trip cost estimates
- Access to planning tools that provide time-zone data, currency exchange rates and flight distance and time calculations

For those operators who fly internationally, keeping track of your crew and passenger information can sometimes be a challenge. Through the Web Portal, Jeppesen International Trip Planning Services (ITPS) customers can add, review and edit the stored information for their flight crews and passengers, including contact numbers and passport details. In addition, you can generate a report that lists any expired passports among your personnel. With that list, portal users can update specific passport data as needed.

With recently added functionality, the Web Portal can serve as a centralized document storage and management solution. You can directly submit and manage your operator-specific documentation that you keep on file with Jeppesen ITPS. This includes items like airworthiness certificates, proofs of insurance and pilot licenses. Together with the personnel data functionality, these new features help to ensure that your data is up-to-date, thereby minimizing the potential for complications during a trip.

A new tool set offers applications that are useful in the pre-planning phase of a trip. Such as the ability to look-up the Local and GMT times for airports around the world using either the current time or a user-specified date and time. The results also include the time conversion factor between Local and GMT times for both airports.



Time zones are a snap with this new conversion tool

Another useful feature is the ability to calculate the distance between two airports. You also have the option to input a true airspeed in order to get a basic ETE. The distance is outputted in nautical miles and the route is plotted graphically over a Jeppesen enroute chart. General information about both airports is provided as well.



Does the boss want to know how long and how far?—that's easy with the distance and time calculator

Functionality to look-up currency exchange rates has recently been created in the Web Portal as well. You can input the desired currencies and a monetary amount in order to find the equivalent value from one currency to the other. The results also include the respective exchange rates between the two currencies and an automatic reverse look-up.



Exchange rates are built right in to the Trip Planning System Web Portal

In addition to the new features mentioned above, users of the Web Portal can submit requests for trip cost estimates through the site, and customize your own quick links to external Web sites. For those customers who also have JetPlan.com accounts, a convenient link is available in the Web Portal that will launch JetPlan.com and automatically log you in. Lastly, the Web Portal has been optimized for use through the popular iPad.

You can expect additional enhancements in the coming months, including a historical schedule time search, new trip submission functionality and the ability to submit changes to trips electronically. For more information on the Trip Planning System Web Portal, please contact your Jeppesen Account Manager. ■

MEET MIKE MCCREADY, OUR NEW MARKET MANAGER FOR BUSINESS AND GENERAL AVIATION



My name is Mike McCready and I'm very excited to be a new member of the Jeppesen team. I joined the company in July 2010 as the Client Management Market

Manager, responsible for defining and implementing market strategies to ensure revenue growth in the business and general aviation market. I've always had a passion for all things aviation, but general and business aviation has been my career focus for more than 13 years. Before coming to Jeppesen I was the Regional Sales Director for XOjet, Inc., where I pioneered new market opportunities for business services throughout the Central United States. Prior to XOjet, I worked with Adam Aircraft as the Director of Eastern United States sales where I managed all aspects of revenue growth.

I'm a Colorado native and attended Colorado School of Mines and Metropolitan State College of Denver where I earned a Bachelor of Science with emphasis in Aviation and a minor in Mathematics. I'm an instrument-rated commercial pilot and CFI with over 1,500 hours of flight time. While working with Adam Aircraft, I logged time in the A500 and trained stunt crews for flight scenes in the movie *Miami Vice*.

As both a long-time Jeppesen customer and now a team member, I am proud to be a part of such a dynamic company that has played a significant role in the aviation industry for more than 75 years. I look forward to contributing to Jeppesen's future by determining the needs of our customers and delivering the solutions that help them succeed. ■

PREFERRED HANDLER SPOTLIGHT—TAHITI AIR SERVICE AND CONCIERGE



The Robert Wan Company has opened Tahiti Air Service & Concierge (TASC), the first full service FBO at Faa'a Airport (NTAA). This significant development for the hub of the French Polynesian islands means operators have access to 24/7 service, fuel (avgas and jet), full ground support and VIP concierge services with a comfortable passenger lounge. Crews have a separate lounge with Internet access and shower facilities. Customs and immigration are cleared on site, and hangar space is available with emergency maintenance assistance if needed.



The TASC ramp can easily accommodate most business aircraft



The well-appointed lounge and crew rest area

TASC can arrange island tours, rental cars, yacht charters and transfers to any of the other islands. The TASC ramp, which is located on the north side of the field, can accommodate up to A320-size aircraft. The TASC facility is a comfortable, convenient and discreet option for corporate travelers in French Polynesia. ■



French Polynesia is a truly spectacular destination



CLOSURES AND ADVISORIES (cont.)

Turkey – At Istanbul Ataturk Airport (LTBA), management of the Slot Coordination Center has recently been transferred from the Civil Aviation Authority to the State Airports Authority. The new management team is revising the rules and regulations for flights, especially for LTBA. Although nothing is concrete yet, it does seem that it will become more difficult for private jets to operate into LTBA, while Istanbul Sabiha Gokcen Airport (LTFJ) will be utilized much more for private aircraft in the future.

United Kingdom – Please be advised that from 02 August 2010 UK Border Agency has introduced Remote Immigration Clearance. This is a form of "pre-clearance" but it can no longer be called that as it has officially been discontinued. This means that, as before, full crew and passenger manifests should be sent to the handlers at London Luton (EGGW) and London Stansted (EGSS) airports by 2200L the day prior to arrival. At minimum, handlers advise they need the information six hours prior to arrival to try and arrange this type of clearance.

For non-EU passport holders (passenger) they must also supply additional information. Jeppesen International Trip Planning Services can provide the required forms and inform you what documents passengers need to complete and which documents are to be filled out by the handler. This information is sent to Immigration and they will then advise the handler if Remote Immigration Clearance is possible. As before, it is Immigration's discretion if this is granted or not, and at any point they can request to see the passports or persons upon arrival.

In theory, if Immigration confirms that Remote Immigration Clearance is possible, upon arrival of the aircraft the agent handling the flight will check that the passports match the details submitted to Immigration. They then must call Immigration and advise. If details are correct Immigration will fax, e-mail or give the agent a stamped copy of the form, which the person must keep with them while in the UK.

If any details are incorrect then the agent will advise Immigration and they will decide if the passport or the person must be taken to the main terminal to be seen. This, of course, will cause delays for passengers so it is important that your international service provider receives the required information in-full and correctly. Immigration agents will no longer be based in the ramp office at Stansted or in Harrods' arrival hall at Luton. They will only be located in the main terminals at these two airports. ■

JEPPESEN ACCOUNT MANAGER PROFILE: BELEN SILVA



My name is Belen Silva and I've been working at Jeppesen for 13 years. Like many of my colleagues, Jeppesen is a family affair. My husband Carlos is a digital press operator at our printing and distribution facility, and in fact, he helped me get my first job at Jeppesen.

Shortly after we were married I began looking for better employment opportunities. Carlos really liked Jeppesen so I began working part-time in the machine collating department where I sorted charts for revision envelopes. I worked part-time for six months before becoming a regular full-time Jeppesen employee.

After three years working in distribution I had the opportunity to move into sales and service. I became a customer service representative in our retail group, and shortly thereafter I moved into my current job supporting our Latin and South American business aviation customers.

I was born in Ciudad Juarez Chihuahua Mexico and grew up in Denver, Colorado

so I'm fluent in both English and Spanish. It really helps communicating with my customers in their native language, although I'm still working on my Portuguese! I graduated from North High School in Denver and then went to Metropolitan State College of Denver. I had to take a break from college when my two beautiful boys, Carlos and Eddie, arrived but now that they're older (14 and 9, respectively) I've been using Jeppesen's tuition reimbursement program to finish my degree in business, hopefully by 2012.

Both of my boys are very active in sports and I spend much of my free time at their games. Our family also helps with fundraising and with the administrative needs of the various teams the boys play on.

The part of my job I enjoy the most is forming friendships with many of my Latin and South American customers. Doing business in these regions is based in large part on close personal relationships, which I've formed over the years through visits to their sites or at trade shows like NBAA and LABACE.

Due to customs requirements and other unique aspects of orders that go to

my customers, I have to be much more vigilant about working with our shipping department and monitoring an order from beginning to end to make sure it arrives safely. I also work closely with our Latin and South American Regional Sales Manager, Stephen Cruz, and with our portfolio management group to make sure the products and processes we put in place meet the unique needs of my customers.

It's been exciting for me to be part of Jeppesen's focus on the Latin and South American business aviation market over the past 10 years. We see the entire region as a promising area for economic development and I look forward to getting to know more of you as I continue my career at Jeppesen. ■

UPCOMING EVENTS

Please check with Jeppesen International Trip Planning for any slot requirements or parking restrictions.

Formula 1 Japanese Grand Prix

08-10 October 2010
Suzuka, Japan
www.formula1.com

NBAA 63rd Annual Meeting & Convention

19-21 October 2010
Atlanta, GA
www.nbaa.org/events/amc/2010

World Economic Forum, Middle East & North Africa

22-24 October 2010
Marrakech, Morocco
www.weforum.org

Formula 1 Korean Grand Prix

22-24 October 2010
Yeongam, Korea

Melbourne Cup Horse Race

02 November 2010
Melbourne, Australia
www.melbournecup.com/melbourne-cup-carnival

Formula 1 Grand Prix Petrobras Do Brasil

05-07 November 2010
Sao Paulo, Brazil

APEC Japan 2010

07-14 November 2010
Yokohama City, Japan
www.apec2010.go.jp/en/index.html

Seoul G20 Business Summit & G20 Summit

10-12 November 2010
Seoul, Korea
www.seoulsummit.kr/eng/main.g20?menu_seq=main

Formula 1 Dhahi Grand Prix

12-14 November 2010
Abu Dhabi, UAE

Middle East Business Aviation (MEBA) 2010

07-09 December 2010
Dubai, UAE
www.meba.aero/

Asian Business Aviation Conference & Exhibition (ABACE) 2011

18-19 January 2011
Hong Kong
www.abace.aero/2011/

NBAA 22nd Annual Scheduler & Dispatchers Conference

09-11 February 2011
Savannah, GA
www.nbaa.org/events/sdc/2011/

NBAA 38th Annual International Operators Conference (IOC)

21-24 March 2011
San Diego, CA
www.nbaa.org/events

PLEASE JOIN US AT ONE OF OUR BUSINESS AVIATION SYMPOSIA:

November 3-4, 2010 in London

November 16, 2010 in Mumbai

November 18, 2010 in Delhi

December 6, 2010 in Dubai

We look forward to welcoming you at any location!

For more information, e-mail corporateflyer@jeppesen.com

jeppesen.com

HOW TO REACH US

Flight Planning, Weather, Fuel,
and International Trip Planning

San Jose, CA

Toll Free: 877.537.7487
Direct: 408.963.2000
Fax: 408.961.5362
email: ifs@jeppesen.com

London, UK

Direct: +44 1293 842403
Fax: +44 1293 842440
email: ifs_eur@jeppesen.com

Dubai, UAE

Direct: +971 4 213 4862
Fax: +971 4 299 7052
email: ifs_dxb@jeppesen.com

AIRWAY MANUALS, CHARTS, JEPVIEW, NAVDATA, AND PILOT SUPPLIES

Denver, CO

Toll Free: 800.553.7750
Direct: 303.328.4244
Fax: 303.328.4124

Neu-Isenburg, Germany

Direct: +49 6102 5070
Fax: +49 6102 507999

London, UK

Toll Free: 08000 UK JEP
(or 0800 085 5377)



JEPPESEN[®]
A BOEING COMPANY

225 W. Santa Clara St., Ste. 1600
San Jose, CA 95113

email: corporateflyer@jeppesen.com