



IN THIS ISSUE

- **CLOSURES AND ADVISORIES**

Check out this section for the latest need to know info.
[Read more.](#)

- **YOU ARE HERE**

Our new integrated flight tracking feature seamlessly links up aircraft situation display data with JetPlanner and JetPlan.com.
[Read more.](#)

- **LONDON CUSTOMER SYMPOSIUM**

Our London business aviation customer event is planned for later this year. [Read more.](#)

- **GAS & GO**

We launched a new version of our Jeppesen World Fuel Services Platinum Card that incorporates the functionality of the popular AVCARD. [Read more.](#)

- **CLEARANCE, CLARENCE?**

New information regarding the U.S. Customs and Border Protection (CBP) preclearance services at Shannon Airport in Ireland (EINN). [Read more.](#)

- **PREFERRED HANDLER SPOTLIGHT: SOUTH AFRICA AND WORLD CUP 2010**

Jeppesen has three preferred handlers in South Africa ready to serve any of your World Cup 2010 needs. [Read more.](#)

- **EMPLOYEE SPOTLIGHT**

Rob Rizzuto, Jeppesen Business Aviation Account Manager, talks about his career at Jeppesen and his interests outside of work. [Read more.](#)

- **UPCOMING EVENTS**

[Read more.](#)



Visit Jeppesen at Hall 6, Booth 336

SIGNIFICANT AIRPORT/RUNWAY CLOSURES

For further information contact Jeppesen International Trip Planning or visit www.jeppesen.com/TPS and click on the Bulletins link

Aruba, Netherland Antilles (TNCA) –

Due to reduced traffic the airport is closed between 0400Z-1100Z throughout most of 2010. After hours arrangements can be made. If you are making a technical stop, it is recommended that Curacao (TNCC) be used instead.

Coventry, UK (EGBE) – The airport has had its operating license suspended and is closed until further notice.

Istanbul, Turkey (LTBA) – Due to the closure of runway 06/24 from 08 March through 01 July 2010 all charter, passenger and business flights are only allowed to land or depart between the hours of 2200Z-0330Z provided both a flight permit and slot have been confirmed during this window. This restriction will remain in effect through 01 July 2010. Please reference NOTAM A0693/10 for further information.

Moscow-Vnukovo (UUWW) – Please note there are now restricted hours on Fridays for all ferry (empty) flights operating into UUWW between the hours of 1700-2200 local time. Arrival slots will not be issued.

TRAVEL AND HEALTH ADVISORIES

The U.S. State Department's current list of travel warnings includes: Afghanistan, Algeria, Burundi, Central African Republic, Chad, Colombia, Cote d'Ivoire, Democratic Republic of Congo, Eritrea, Georgia, Guinea, Haiti, Iran, Iraq, Israel, the West Bank and Gaza, Kenya, Lebanon, Mali, Mauritania, Mexico, Nepal, Nigeria, Pakistan, Philippines, Saudi Arabia, Somalia, Sri Lanka, Sudan, Uzbekistan and Yemen.

NOTABLE FUEL SHORTAGES & RESTRICTIONS

Asmara, Eritrea (HHAS) – No fuel available until further notice.

Ecuador – Effective 01 March 2010, the sole supplier of fuel in Ecuador is Petrocomercial, Jeppesen's fuel partner, World Fuel Services Corporation, has signed a contract with Petrocomercial to be the sole distributor of international jet fuel in that country. It is recommended that operators verify that their fuel provider is licensed in Ecuador and that details regarding refueling are communicated to the ground handler.

Entebbe, Uganda (UUEN) – No fuel available until further notice.

Horta, Azores (LPHR) – No fuel available until further notice.

Sydney, Australia (YSSY) – Fuel availability has returned to normal. >>

JEPPESEN FLIGHT TRACKING

We are excited to announce our new integrated flight tracking feature, which, beginning in spring 2010, will allow Jeppesen flight planning and weather services customers to view aircraft position reports using JetPlan.com and JetPlanner.

Aircraft position reports are supplied from three sources: The primary source is the FAA Aircraft Situation Display for Industry (ASDI) feed, which includes reports for all IFR flight plans within the United States, as well as aircraft that have filed the United States for departure or arrival. Jeppesen receives a near real time Class 1 ASDI feed that also includes aircraft position reports from London Center, so all aircraft being handled by London ATC are included in the feed.

Important Note: To view the FAA ASDI position reports you must first sign a Memorandum of Agreement (MOA), as well as an FAA Self Audit form and return these to Jeppesen. These forms can be found here: www.fly.faa.gov/ASDI/asdi.html

This security measure is required by FAA to verify that you are entitled to view Class 1 ASDI data.

The second source is the EUROCONTROL Central Flow Management Unit (CFMU) feed. Beginning in the last half of 2010, this new source of European aircraft position reports will be included in the Jeppesen flight tracking service.

Important Note: If you want to view the EUROCONTROL CFMU position reports, you must first register by completing the form found here: www.cfm.eurocontrol.int/cfmu/public/standard_page/cfmu_systems_evolutiondds.html.

The third source is ACARS position reports. For customers operating outside of Europe and North America, Jeppesen can incorporate your company position reports into our database. To utilize this feed, you must first convert your company ACARS reports into a Jeppesen global ASD format (GASD), and then transmit reports to Jeppesen so we can include them in our flight tracking database. Jeppesen can supply an Interface Control Document (ICD) that details how to convert the ACARS reports into our GASD format, and we will assist in establishing a VPN connection so you can transmit your position reports to us.

FAA ASDI Class 1 data is near real time with one minute updates on position reports in radar controlled areas, while Class 2 data is delayed and up to 15 minutes old. To ensure the most accurate information is available we only use Class 1 data. Because we integrate all sources of position reports into one central database, all customers wishing to use Jeppesen flight tracking must complete any required forms and agreements prior to being granted access to the data. Jeppesen

will use your preferences to determine what source of data is used when multiple reports of the same aircraft are available.

JetPlan.com

The JetPlan.com web interface allows you to track flights using the Google Earth™ application. You access the flight tracking feature by selecting the "General Info" tab and then clicking on the link in the upper left corner of the page stating "View and Track current Aircraft Locations."



JetPlan.com general information tab

Then you will be presented with the following flight tracking interface:



JetPlan.com flight tracking interface

From this screen you can create, modify or delete flight tracking filters. Filters can be created to track individual aircraft or groups of aircraft by company call sign, departure airport or arrival airport.

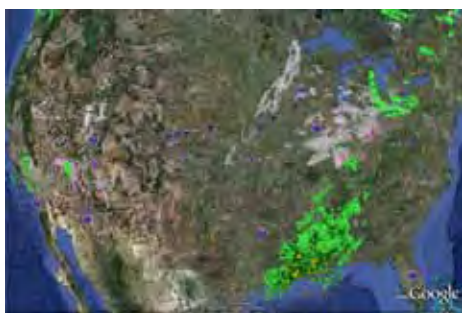
If a single aircraft is selected, you will see the entire flight path as well as the filed flight plan path. You can move your mouse cursor over the current position and get flight status details, such as aircraft type, departure airport, arrival airport, current and original time of departure, current and original time of arrival, filed flight plan route, heading, speed, altitude and location (lat/long).

The white line is the actual aircraft track and the red line indicates the filed flight plan track. NEXRAD radar is overlaid. You can select any Google Earth™ features as overlays too. >>



Tracking a single flight in JetPlan.com

If a group of company aircraft or departure/arrival airports are selected as filters you will only see the current aircraft positions. You can click on any aircraft and get details of that flight, which includes heading and position (lat/long).



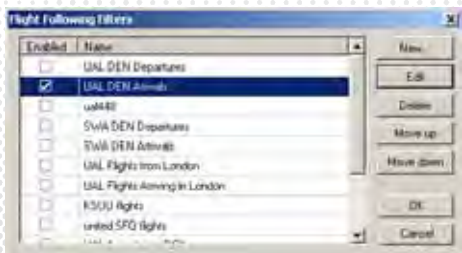
Tracking multiple Denver arrivals with JetPlan.com

You can select multiple filters to be displayed simultaneously, and set the update frequency so position updates are provided automatically while viewing.

JetPlanner

The JetPlanner interface allows you to display aircraft positions using the Jeppesen chart viewing background. You can select a variety of Jeppesen weather maps to overlay with aircraft positions.

To select flight tracking within JetPlanner, select a new row of icons just above the chart view tab. To initially set up flight tracking filters, select the red cone at the far right. This tab will present the following interface:



Selecting flight following filters in JetPlanner

This window allows you to create, modify or delete flight tracking filters.

It also is used to select which filters are active. Multiple filters can be selected simultaneously, but only six that contain aircraft groups can be active at one time.

The icon to the left of the filters is used to toggle on/off data block elements. When checked, various data block elements can be displayed with each aircraft. You can customize what data is displayed in the data block by selecting "Tools," then "Options" and lastly the "Flight Following" tab. This tab allows you to select the data block elements, as well as the refresh period and the flight tail track period.



Customizing aircraft data block elements in JetPlanner

The next icon to the left is used to manually refresh the data, and the far left icon is for toggling on/off the flight tracking display.



JetPlanner flight tracking display customized with various filters

This view above shows UAL aircraft arriving KDEN in blue, and SWA aircraft arriving KDAL in red. NEXRAD radar is overlaid and you can create any background map you want using JetPlanner's chart view functionality.

The flight plan route with the flight tracking position reports can also be displayed if you have created flight plans for a specific flight. >>

REGIONAL UPDATES

Bangladesh – Plans to begin Daylight Savings Time (DST) at the end of March 2010 have been cancelled as DST will no longer be observed.

Basel-Mulhouse, France (LFSB) – A new regulation is now in effect requiring a full crew and passenger manifest to be submitted to your handling agent, preferably sent in advance to avoid any delays. The manifest should include the name, passport number, expiration date, date of birth, nationality and place of issue for everyone on board.

Belize – All arrivals now require a stamped general declaration from the last point of departure prior to arrival into Belize. For locations that do not provide a stamped general declaration, a copy of an electronic customs submission, such as APIS, is acceptable. To expedite the arrival process, the documentation should be forwarded to the Belize ground handler prior to the aircraft's arrival.

Durban, South Africa – Effective 01 May 2010, a new airport, King Shaka International (FALE), will replace Durban International Airport (FADN). The opening of the new airport is in advance of World Cup 2010, which commences in June (please see the Preferred Handler Spotlight article in this issue of the Corporate Flyer).

Iran – Please note Iran CAA will no longer issue overflight permits for private, business, or cargo flights coming from or going to Afghanistan. The only exception is commercial flights.

Nice, France (LFMN) – Originally scheduled to open in October 2009, a new general aviation terminal was unveiled on 30 March 2010. The terminal, which is officially called TAA (Terminal d'Aviation d'Affaires), is adjacent to Terminal 2 and was built at an estimated cost of €1.9M. The local ground handlers have all been allocated an equal share of space; 280m².

Portugal – Effective 01 March 2010, the Portuguese government has modified the fee scheme for air navigation services. Because this change is retroactive to 01 January 2010, operators may receive supplemental invoices for flights that transitioned Portuguese airspace during the first two months of 2010.

Russia – The regions of Chukotka and Kamchatka will not enact a time change until later this year, at which point a change to the Magadan time zone (+11 standard, +12 DST) will occur. Among the airports this applies to are Ugolny (UHMA), Provideniya Bay (UHMD) and Petropavlovsk (UHPP). ■

JEPPESEN FLIGHT TRACKING (cont.)

With the CFMU and ACARS position reports, Jeppesen's integrated flight tracking feature provides worldwide coverage. For Commercial and Military customers, there is an additional fee for flight tracking capability. Business aviation customers will have access with an unlimited flight planning agreement.

Again, please note that you must complete any required forms and agreements before we can grant you access to flight tracking data.

We hope this new feature will be valuable to your operation. As always, we appreciate any feedback so we can make this functionality even more useful. For more information on the flight tracking feature, or to give us feedback, please contact your account manager. ■

BUSINESS AVIATION CUSTOMER SYMPOSIUM – LONDON: POSTPONED

Due to a very limited number of registrants, Jeppesen had to make the unfortunate decision to postpone the customer seminar that was originally scheduled for 17-18 March 2010.

The event is now planned for the last quarter of 2010 and will still take place at the London Heathrow Hilton.

The two-day conference will contain general product overviews and roadmaps of Jeppesen's corporate aviation products. There will also be in-depth breakout sessions for hands-on demonstrations of various products and applications. A detailed agenda and invitation will be distributed once the new dates are confirmed. We'll also provide a link to the event website with all relevant information on location, schedule and registration process. We look forward to welcoming you to London! ■

JEPPESEN AND WORLD FUEL SERVICES LAUNCH NEW FUEL CARD

Building on our eight year partnership with World Fuel Services, we have launched a new version of our co-branded Jeppesen World Fuel Services Platinum Card. This new card incorporates the functionality of the popular AVCARD, which World Fuel Services acquired in 2007. You can use the card for both contract and retail fuel purchases. Additionally, holders of the Jeppesen World Fuel Services Platinum Card have access to a wide range of premium services.



Management Reports

Every time a purchase is made at an FBO, fuel supplier or ground services provider, the Jeppesen World Fuel Services Platinum Card captures the transaction in detail, breaking out fuel, taxes, parking, ground services, aircraft maintenance, suppliers, landing fees, etc.

Then each month we provide you a detailed analysis of purchases summarized by vendor, aircraft and state. Included in these reports are the discounts earned along with the average price paid for fuel. This information can be used for a variety of purposes including future fuel discount negotiations, filing for tax refunds and budgeting.

Discounts earned for the month and year-to-date can also be a useful tool to quantify your negotiating skills and the benefits of the Jeppesen World Fuel Services Contract Fuel Program.

airPortfolio

This premier e-commerce account management system, which is accessible at www.avcard.com/searchpages/aboutairportfolio.asp, gives you convenient access to secure account information and tools for managing your company's aviation fuel expenses online.

Billing Options

We now offer two billing options, electronic and paper, giving you the flexibility to select whatever format best meets your needs. With the paper option, you can opt for a standard or customized billing format. The electronic option lets you receive data in a standard ASCII or Excel file making analysis and routing simple and convenient.

You can select three currencies for billing: U.S. dollars, Canadian dollars and euros. As an added feature, images of all customer tickets are included with every invoice.

Jeppesen World Fuel Services Platinum Card is accepted virtually everywhere

Jeppesen World Fuel Services Platinum Card can be used at over 7,200 locations worldwide, including the most popular destinations around the world. For more information on the card or the Jeppesen World Fuel Services program, please e-mail our in-house fuel representatives at fuel@jeppesen.com or phone +1 408 961 2520 (US) or +44 (0) 1293 842435 (UK). ■

SHANNON AIRPORT CUSTOMS PRECLEARANCE

Since its introduction on 01 March 2010, additional information has become available regarding the new U.S. Customs and Border Protection (CBP) preclearance services for private non-commercial flights at Shannon Airport in Ireland (EINN). Numerous operators have already utilized these services and the process appears to be working smoothly. If you are planning to operate from Shannon to the United States, please review the following information as well as the linked PDF documents.

- The steps involved in requesting the preclearance service for arriving in the United States are outlined in the following document. Additionally, 22 airports in the United States have been approved by CBP as direct destinations following preclearance in Shannon. That brings the total number of available airports to 231. The full list of airports is also included in this document:

[CBP Preclearance Summary](#)

- Shannon Airport authorities have issued an airport diagram that shows the >>

SHANNON AIRPORT CUSTOMS PRECLEARANCE (cont.)

parking locations for aircraft utilizing the preclearance services. There is also a draft version of the route through the airport that crew and passengers can expect to take during the preclearance process.

Please reference these documents below:

[Airport Diagram](#)

[Passenger Routing Preclearance](#)

There is a special baggage system in place to process the luggage and personal effects of crew members and passengers. The details of the process can be found in the following document:

[Baggage Process Preclearance](#) ■


PREFERRED HANDLER SPOTLIGHT: SOUTH AFRICA AND WORLD CUP 2010

Dubai-based Jeppesen Handler Relations Manager for Africa, the Middle East and India, Wynand Meyer, recently visited South Africa to determine the best ground handling options for Jeppesen customers attending the World Cup in June and July.

As a native South African, Wynand's personal knowledge and insight of the region helps ensure Jeppesen has the most current and updated information for the upcoming event.

The South African providers presently in the Jeppesen Ground Handler Network are ExecuJet, BIDAir Services and Signature Flight Support. All three are well-established and reputable companies that provide the highest levels of service and support.

ExecuJet Aviation Group

 Based on professionalism, facilities offered and event arrangements currently in place, such as slots and hotel reservations, Jeppesen has selected ExecuJet as its preferred handler at the majority of airports that will be supporting traffic coming to South Africa for the World Cup. For airports where ExecuJet does not have a physical presence, they have partnered with local handling companies and will deploy agents to oversee each operation. ExecuJet also offers personnel deployment to any African destination on request and are specialists in presidential, diplomatic, royalty and VIP flights.

The ExecuJet Aviation Group operates two FBO facilities in South Africa, which are located in Johannesburg and Cape Town. ExecuJet has been dedicated to providing its customers with the best passenger amenities and pilot services for over a decade. These services include: passenger handling; line and base maintenance; aircraft ramp and hangar parking; dependable ground support equipment; NOTAMs; weather; landing

permits; hotel accommodations; limousine and car hire; fuel; immigration liaison and luggage services. ExecuJet's facilities provide working and rest areas with wireless internet, plasma televisions, newspapers and magazines in a secure and safe environment.

Johannesburg

ExecuJet Johannesburg facility is conveniently located at Lanseria International Airport (FALA), just 20 minutes from the northern suburbs. This location has a private apron and 9,000m² of hangar space.



ExecuJet's 9,000m² hangar facility in Johannesburg



ExecuJet's Johannesburg facility

Cape Town

ExecuJet's spectacular facility at Cape Town International Airport (FACT) is undoubtedly one of the finest FBO developments in the world. This location is only 25 minutes from the city center and the Cape Town coastline. The facility is strategically located parallel to the main

runway with 5,000m² of hangar space and 7,000m² of dedicated ramp parking.



ExecuJet's impressive Cape Town facility

ExecuJet South Africa has prepared an informative brochure on its services and World Cup 2010 that can be found here:

[ExecuJet Brochure](#)

BIDAir Services

 With over 15 years of experience in handling aircraft throughout the country, operators can rest assured that BIDAir Services will deliver a high level of service. BIDAir VIP Executive Concierge division, previously known as Aerospace International, is a specialized group within BIDAir Services that provides executive ground handling services, including: VIP meet and greet; comprehensive passenger services; aircraft interior and exterior cleaning; aircraft security; business lounge facilities; full aircraft services; airside transfers; off airport transfers; and overflight and landing clearances. BIDAir Services is one of three handlers that hold a super license allowing them to operate in all major ACSA airports in South Africa.

Signature Flight Support

 Signature Flight Support is well known around the world and is part of the BBA Aviation Services Group, which is the world's largest FBO network. Signature's products and services include aircraft fuelling, hangar and office rentals to aviation specialist >>

PREFERRED HANDLER SPOTLIGHT: SOUTH AFRICA AND WORLD CUP 2010 (cont.)

service providers, ground handling, passenger services, maintenance and other aviation-related procurement services.

The Cape Town FBO offers a modern building and hangar complex located on 7,200m² of land within the general aviation area at Cape Town International Airport (FACT). The complex itself houses various tenants, which are all aviation specialist service providers. Jet A1 and avgas are available on a 24 hour basis. Signature has in-house security for vehicles and aircraft parked overnight,

hotel and car bookings, as well as an on-site restaurant and conference facility.

Signature Flight Support Cape Town complies with the ISO 9001:2000 Quality Management System. With a mission to consistently deliver to its customers the highest quality services and products, it has a motivated and enthusiastic team of 23 employees who adhere to the company's values of integrity, responsibility, safety, service, people and performance. The team is proud of its ability to consistently deliver personalized, safe, efficient and reliable service to its customers. ■



Signature Flight Support's capable facility in Cape Town

JEPPESEN ACCOUNT MANAGER PROFILE: ROB RIZZUTO



My name is Rob Rizzuto and I am Jeppesen's Northeast US and Eastern Canadian Account Manager for business aviation customers. I have been with Jeppesen for almost five years and have been an account manager for over three. I started taking flying lessons at 16 with aspirations of becoming a professional pilot. While taking aviation classes at Metropolitan State College of Denver, however, I realized I wanted to pursue the management side of aviation instead. While majoring in Aviation Management, I continued to learn how to fly and currently hold a Commercial/Multi-Engine license and I am also a Certified Flight Instructor.

After college, I started with Jeppesen where I first analyzed and drafted

terminal approach charts. It was in this first job where I gained hands-on knowledge of Jeppesen's core product and came to understand how important our products and services really are to the aviation community. To this day it amazes me how we compile different types of information, verify its integrity and draft it into either an enroute map or terminal chart that is safe to navigate with. The quality of our products is so vital, and the trust our customers have in us is a true testament to the dedicated employees of Jeppesen's charting division.

In February of 2007, I had the opportunity to move into account management and have been in this position ever since. My primary role is to support the chart, NavData, training and International Trip Planning products and services for business aviation customers. My customers consist of corporate flight departments, charter operators, aircraft management, government contractors and aircraft demo operators. Because every customer is unique and has specific needs and requirements, I strive to become familiar with each one.

I work closely with product managers, accounting/credit departments, technical support and management on a daily basis. The customer comments and feedback I receive are vital to Jeppesen and I work hard to relay those points to the appropriate people. I also work closely with our Northeast U.S. Regional Sales Manager to better provide our customers with overall solutions.

When not at work, I enjoy playing golf, fishing and riding motorcycles. I also enjoy working on cars. Currently, my father and I are restoring a 1949 Cadillac that has been in our family since 1951. Our project started with the idea of just getting the car drivable once again. It has now become a complete body off restoration and the car will look just as it did rolling off the assembly line in 1949.

During my time as an Account Manager, I have had the privilege to work with some of the best customers Jeppesen has. I have learned so much about the business aviation market and I am always learning something new. I am excited about the future of business aviation and looking forward to a great 2010. ■

UPCOMING EVENTS

Please check with Jeppesen International Trip Planning for any slot requirements or parking restrictions.

Kentucky Derby

01 May 2010
Churchill Downs, Kentucky
www.kentuckyderby.com

European Business Aviation Convention & Exhibition (EBACE)

04-06 May 2010
Geneva, Switzerland
www.ebace.aero/2010

World Economic Forum on Africa

05-07 May 2010
Dar es Salaam, Tanzania
www.weforum.org/en/events/WorldEconomicForumonAfrica2010

Formula 1 Grand Prix

07-09 May 2010
Cataluña, Spain
www.formula1.com

World Economic Forum on Europe

10-11 May 2010
Brussels, Belgium
www.weforum.org/en/events/WorldEconomicForumonEurope

55th NBAA Corporate Aviation Safety Seminar (CASS)

11-13 May 2010
Tucson, Arizona
www.nbaa.org/events/cass/2010

Formula 1 Grand Prix

13-16 May 2010
Monaco
www.formula1.com

Cannes Film Festival

12-23 May 2010
Cannes, France
www.festival-cannes.fr/en.html

IATA Ground Handling Annual Conference

16-19 May 2010
San Diego, California
www.iata.org/workgroups/ighc.htm

Formula 1 Grand Prix

28-30 May 2010
Istanbul, Turkey
www.formula1.com

Indianapolis 500

30 May 2010
Indianapolis, Indiana
www.indycar.com

NBAA Regional Forum

10 June 2010
Teterboro, New Jersey
www.nbaa.org/events/forums/20100610

ILA Berlin Air Show

08-13 June 2010
Schoenefeld Airport
Berlin, Germany
www.ila-berlin.de/ila2010/home/index_e.cfm

Canadian Business Aviation Association (CBAA) Annual Convention

07-08 July 2010
Calgary, Canada
www.cbaa.ca/convention

Farnborough International Air Show

19-25 July 2010
Farnborough, UK
www.farnborough.com

Latin American Business Aviation Conference & Exhibition (LABACE)

12-14 August 2010
Sao Paulo, Brazil
www.abag.org.br

Jet Expo 2010

15-17 September 2010
Moscow, Russia
www.jetexpo.ru

NBAA Annual Meeting & Convention

19-21 October 2010
Atlanta, Georgia
www.nbaa.org/events/amc/2010

Middle East Business Aviation (MEBA)

07-09 December 2010
Dubai, UAE
www.meba.aero

jeppesen.com

HOW TO REACH US

Flight Planning, Weather, Fuel,
and International Trip Planning

San Jose, CA

Toll Free: 877.537.7487
Direct: 408.963.2000
Fax: 408.961.5362
email: ifs@jeppesen.com

London, UK

Direct: +44 1293 842403
Fax: +44 1293 842440
email: ifs_eur@jeppesen.com

Dubai, UAE

Direct: +971 4 213 4862
Fax: +971 4 299 7052
email: ifs_dxb@jeppesen.com

AIRWAY MANUALS, CHARTS, JEPPIVIEW, NAVDATA, AND PILOT SUPPLIES

Denver, CO

Toll Free: 800.553.7750
Direct: 303.328.4244
Fax: 303.328.4124

Neu-Isenburg, Germany

Direct: +49 6102 5070
Fax: +49 6102 507999

London, UK

Toll Free: 08000 UK JEPPI
(or 0800 085 5377)



JEPPESEN[®]
A BOEING COMPANY

225 W. Santa Clara St., Ste. 1600
San Jose, CA 95113

email: corporateflyer@jeppesen.com