

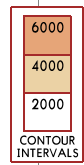
ATIS 124.4	Apt Elev 439
---------------	-----------------

Alt Set: INCHES Trans level: FL180
 1. **RADAR required after RNDRR.** 2. **GPS required.** 3. **RNAV 1.**
 4. Monitor ATIS for runway in use. 5. EXPECT runway assignment from Fairbanks Approach Control on initial contact. 6. EXPECT to cross RDFLG at or below 17000 when DELTA ATCAA is active.

HRDNG 2 RNAV ARRIVAL (RDFLG.HRDNG2)

ROUTING
 From RDFLG on track 288° to HRDNG, then on track 285° to RNDRR.

LANDING	
RWY	
2L	From RNDRR on track 257° to KRIIS, then on track 231° to BAYKR, then on track 200°. EXPECT RADAR vectors to final approach course.
20R	From RNDRR on track 327° to ROAAD, then on track 327° to HISKA, then on track 013°. EXPECT RADAR vectors to final approach course.



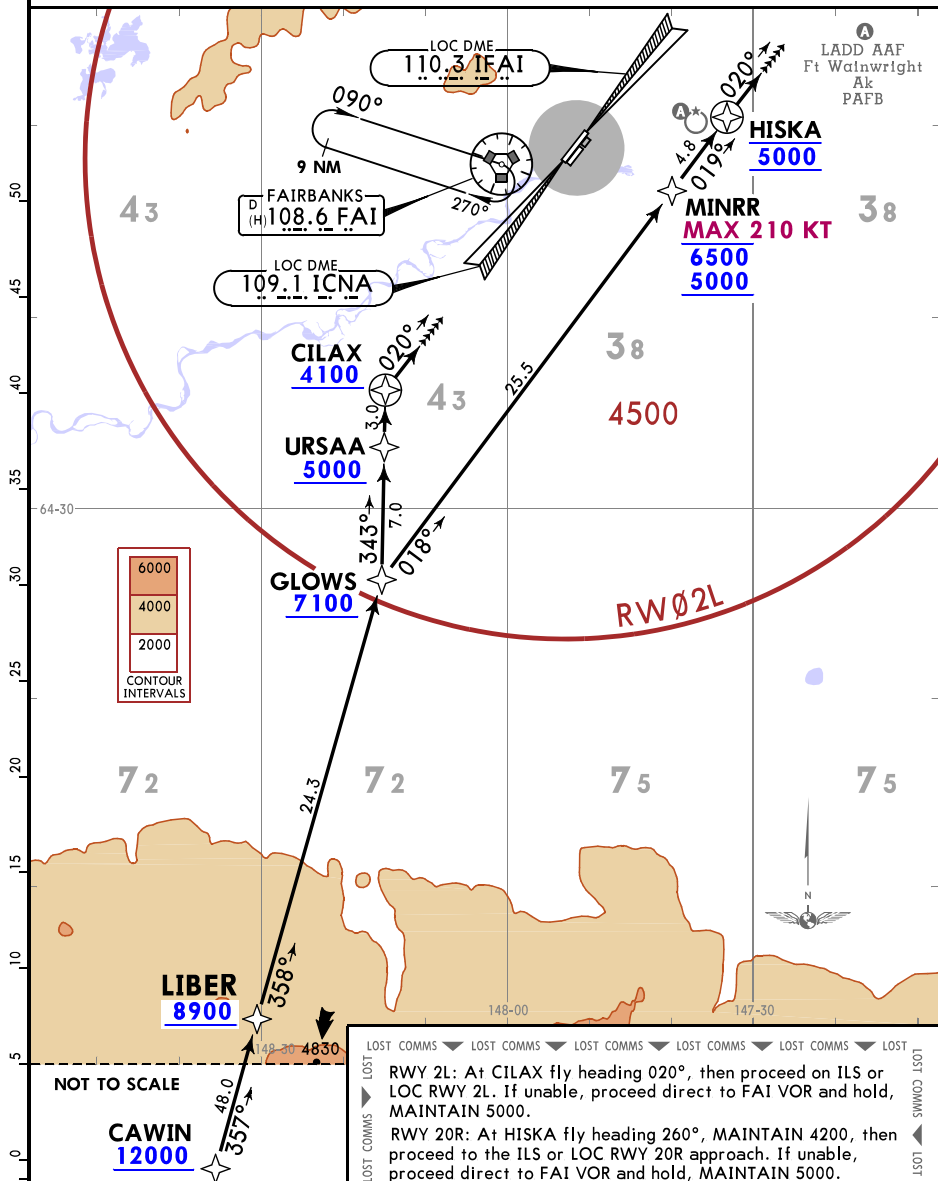
COMMS ▼ LOST COMMS ▼ LOST COMMS ▼ LOST COMMS ▼ LOST COMMS ▼ LOST
 RWY 2L: After BAYKR fly heading 320°, MAINTAIN 3700, intercept and execute the ILS or LOC RWY 2L approach. If unable, proceed direct to FAI VOR and hold, MAINTAIN 5000.
 RWY 20R: After HISKA fly heading 260°, MAINTAIN 4200, intercept and execute the ILS or LOC RWY 20R approach. If unable, proceed direct to FAI VOR and hold, MAINTAIN 5000.

ATIS
124.4

Apt Elev
439

Alt Set: INCHES Trans level: FL180
 1. RADAR required after GLOWS. 2. GPS required. 3. RNAV 1.
 4. Monitor ATIS for runway in use. 5. EXPECT runway assignment from
 Fairbanks Approach Control upon initial contact.

LIBER 3 RNAV ARRIVAL (CAWIN.LIBER3)



LOST COMMS ▼ LOST COMMS ▼ LOST COMMS ▼ LOST COMMS ▼ LOST COMMS ▼ LOST COMMS ▼ LOST COMMS ▼

LOST RWY 2L: At CILAX fly heading 020°, then proceed on ILS or LOC RWY 2L. If unable, proceed direct to FAI VOR and hold, MAINTAIN 5000.

LOST RWY 20R: At HISKA fly heading 260°, MAINTAIN 4200, then proceed to the ILS or LOC RWY 20R approach. If unable, proceed direct to FAI VOR and hold, MAINTAIN 5000.

ROUTING

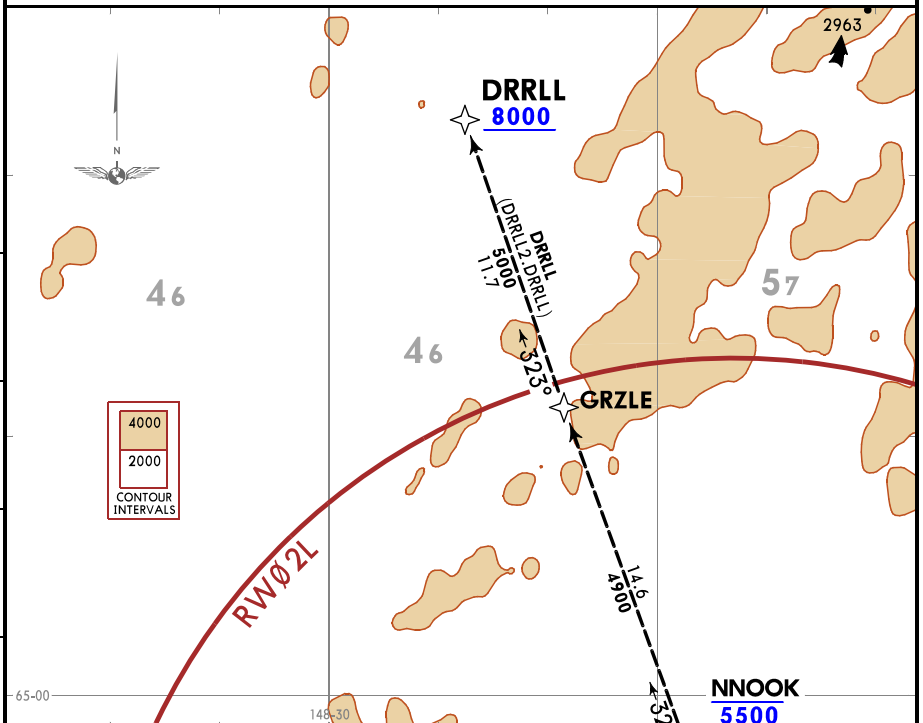
From CAWIN on track 357° to LIBER, then on track 358° to GLOWS.

RWY	LANDING
2L	From GLOWS on track 343° to URSAA, then on track 343° to CILAX, then on track 020°. EXPECT RADAR vectors to final approach course.
20R	From GLOWS on track 018° to MINRR, then on track 019° to HISKA, then on track 020°. EXPECT RADAR vectors to final approach course.

Reproduced with permission of Jeppesen. NOT FOR NAVIGATIONAL USE. © Jeppesen, 2018

FAIRBANKS Departure (R) 360°-179° 126.5	180°-359° 125.35	Apt Elev 439	Trans alt: 18000 1. GPS required. 2. RNAV 1.
--	----------------------------	------------------------	--

DRRL 2 RNAV DEPARTURE (DRRL2.DRRL)



TAKEOFF OBSTACLE NOTES
 Rwy 2L: Building 330 from DER, 251 left of centerline, 13 AGL/448 MSL. Trees beginning 2256 from DER, 937 right of centerline, up to 84 AGL/517 MSL. Pole, transmission line, catenary, and trees beginning 1961 from DER, 666 left of centerline, up to 78 AGL/514 MSL.
 Rwy 20R: Building 7 from DER, 424 right of centerline, 22 AGL/447 MSL. Light and navaid 10 from DER, 65 right of centerline, 1 AGL/437 MSL. Light 10 from DER, 64 left of centerline, 1 AGL/436 MSL. Trees beginning 1093 from DER, 786 left of centerline, up to 54 AGL/483 MSL. Trees beginning 1799 from DER, 714 right of centerline, up to 66 AGL/492 MSL.

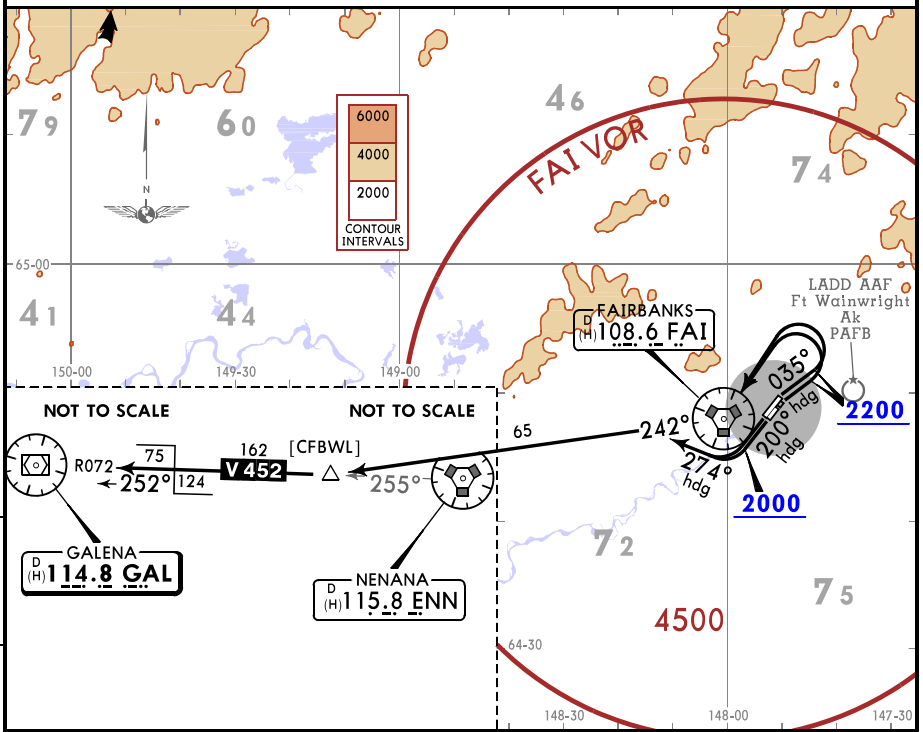
This SID requires take-off minimums (for standard minimums, refer to airport chart):
 Rwy 2L: Standard (or lower than standard, if authorized) with minimum climb of 500 per NM to 1800.
 Rwy 20R: Standard (or lower than standard, if authorized) with minimum climb of 500 per NM to 3000.

Gnd speed-KT	75	100	150	200	250	300
500 per NM	625	833	1250	1667	2083	2500

RWY	INITIAL CLIMB	TOP ALTITUDE
2L	Climb heading 020° to 1800, then LEFT turn direct NNOOK, cross NNOOK between 4400 and 5500, then on DRRL Transition.	Assigned by ATC
20R	Climb heading 200° to 1800, then RIGHT turn direct NNOOK, cross NNOOK between 4400 and 5500, then on DRRL Transition.	

FAIRBANKS Departure (R) 360°-179° 126.5	180°-359° 125.35	Apt Elev 439	Trans alt: 18000 DME required.
--	----------------------------	------------------------	-----------------------------------

GALENA 5 DEPARTURE (GLEEN5.GAL)



TAKEOFF OBSTACLE NOTES

Rwy 2L: Building 330 from DER, 251 left of centerline, 13 AGL/448 MSL. Trees beginning 2256 from DER, 937 right of centerline, up to 84 AGL/517 MSL. Pole, transmission line, catenary, and trees beginning 1961 from DER, 666 left of centerline, up to 78 AGL/514 MSL.

Rwy 2R: Buildings, vehicles on road, bushes, signs, fence, tanks, and trees beginning abeam DER, 244 left of centerline, up to 15 AGL/448 MSL. Signs and aircraft on ramp beginning 11 from DER, 247 right of centerline, up to 8 AGL/441 MSL.

Rwy 20L: Light 9 from DER, 30 right of centerline, 1 AGL/434 MSL. Light 9 from DER, 30 left of centerline, 1 AGL/437 MSL. Sign and trees beginning 21 from DER, 249 right of centerline, up to 38 AGL/470 MSL. Sign, transmission line tower, and catenaries beginning 49 from DER, 457 left of centerline, up to 37 AGL/465 MSL. Trees beginning 292 from DER, 552 right of centerline, up to 72 AGL/501 MSL. Pole, transmission line tower, and trees beginning 458 from DER, 546 left of centerline, up to 49 AGL/480 MSL.

Trees beginning 1225 from DER, 236 right of centerline, up to 70 AGL/501 MSL. Trees beginning 1895 from DER, 131 left of centerline, up to 62 AGL/492 MSL.

Rwy 20R: Building 7 from DER, 424 right of centerline, 22 AGL/447 MSL. Light and navaid 10 from DER, 65 right of centerline, 1 AGL/437 MSL. Light 10 from DER, 64 left of centerline, 1 AGL/436 MSL. Trees beginning 1093 from DER, 786 left of centerline, up to 54 AGL/483 MSL. Trees beginning 1799 from DER, 714 right of centerline, up to 66 AGL/492 MSL.

This SID requires take-off minimums (for standard minimums, refer to airport chart):

Rwys 2L/R: Standard (or lower than standard, if authorized) with a minimum climb of 250 per NM to 2200.

Rwys 20L/R: Standard (or lower than standard, if authorized).

Gnd speed-KT	75	100	150	200	250	300
230 per NM	288	383	575	767	958	1150

RWY		INITIAL CLIMB
2L/R	Climb heading 035° to 2200, then LEFT turn direct FAI VOR.	
20L/R	Climb heading 200° to 2000, then RIGHT turn heading 274°.	

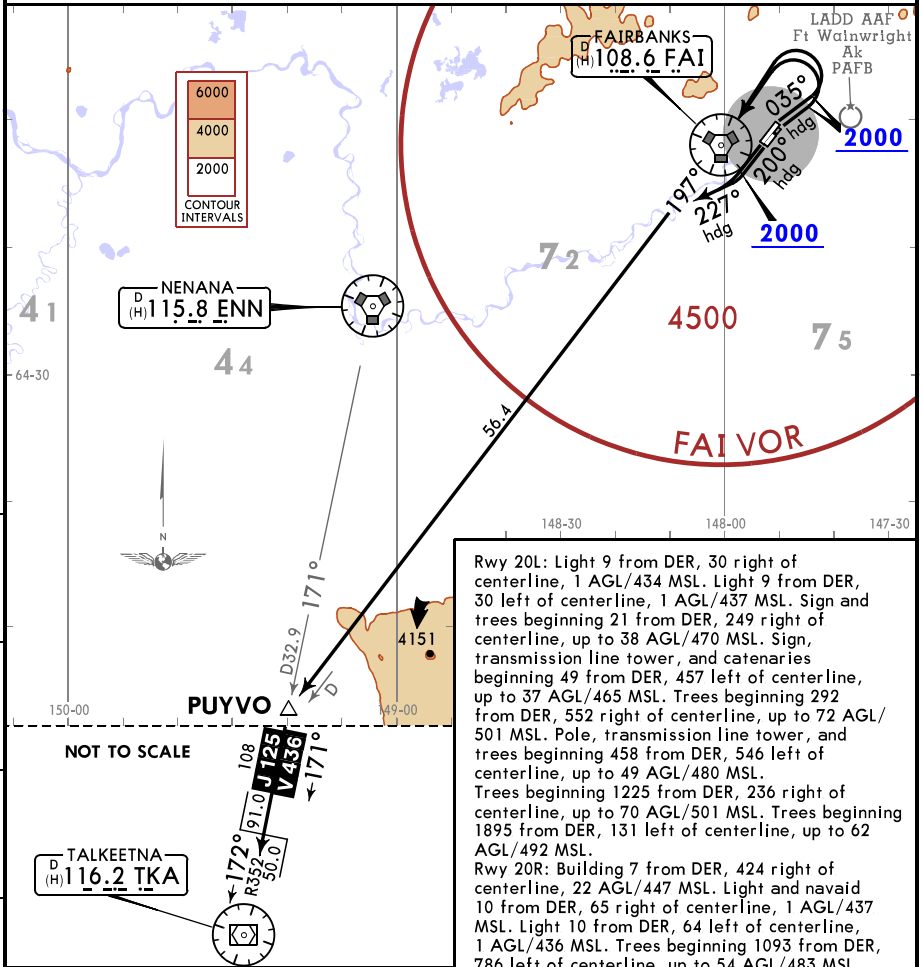
ROUTING

Intercept FAI R242 to ENN R255, then on ENN R255 and GAL R072 (V-452) to GAL VOR, then continue climb on assigned route and altitude.

Reproduced with permission of Jeppesen. NOT FOR NAVIGATIONAL USE. © Jeppesen, 2018

FAIRBANKS Departure (R) 360°-179° 126.5	180°-359° 125.35	Apt Elev 439	Trans alt: 18000 DME required.
--	----------------------------	------------------------	-----------------------------------

McKINLEY 1 DEPARTURE (MKNLY1.TKA)



Rwy 20L: Light 9 from DER, 30 right of centerline, 1 AGL/434 MSL. Light 9 from DER, 30 left of centerline, 1 AGL/437 MSL. Sign and trees beginning 21 from DER, 249 right of centerline, up to 38 AGL/470 MSL. Sign, transmission line tower, and catenaries beginning 49 from DER, 457 left of centerline, up to 37 AGL/465 MSL. Trees beginning 292 from DER, 552 right of centerline, up to 72 AGL/501 MSL. Pole, transmission line tower, and trees beginning 458 from DER, 546 left of centerline, up to 49 AGL/480 MSL. Trees beginning 1225 from DER, 236 right of centerline, up to 70 AGL/501 MSL. Trees beginning 1895 from DER, 131 left of centerline, up to 62 AGL/492 MSL.

Rwy 20R: Building 7 from DER, 424 right of centerline, 22 AGL/447 MSL. Light and navaid 10 from DER, 65 right of centerline, 1 AGL/437 MSL. Light 10 from DER, 64 left of centerline, 1 AGL/436 MSL. Trees beginning 1093 from DER, 786 left of centerline, up to 54 AGL/483 MSL. Trees beginning 1799 from DER, 714 right of centerline, up to 66 AGL/492 MSL.

TAKEOFF OBSTACLE NOTES

Rwy 2L: Building 330 from DER, 251 left of centerline, 13 AGL/448 MSL. Trees beginning 2256 from DER, 937 right of centerline, up to 84 AGL/517 MSL. Pole, transmission line, catenary, and trees beginning 1961 from DER, 666 left of centerline, up to 78 AGL/514 MSL.

Rwy 2R: Buildings, vehicles on road, bushes, signs, fence, tanks, and trees beginning abeam DER, 244 left of centerline, up to 15 AGL/448 MSL. Signs and aircraft on ramp beginning 11 from DER, 247 right of centerline, up to 8 AGL/441 MSL.

This SID requires take-off minimums (for standard minimums, refer to airport chart):
Rwys 2L/R: Standard (or lower than standard, if authorized) with a minimum climb of 250 per NM to 2000.
Rwys 20L/R: Standard (or lower than standard, if authorized).

Gnd speed-KT	75	100	150	200	250	300
230 per NM	288	383	575	767	958	1150

RWY	INITIAL CLIMB
2L/R	Climb heading 035° to 2000, then LEFT turn direct FAI VOR.
20L/R	Climb heading 200° to 2000, then RIGHT turn heading 227°.

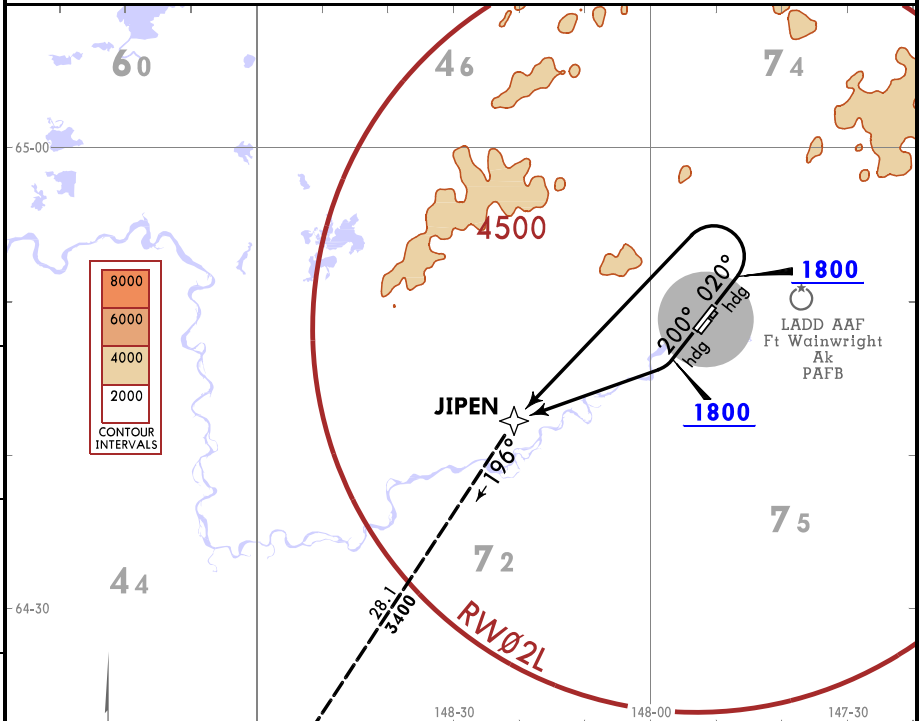
ROUTING

Intercept FAI R197 to PUYVO/D56.4 FAI, then on ENN R171 and TKA R352 (J-125 and V-436) to TKA VOR, then on assigned route and altitude.

Reproduced with permission of Jeppesen. NOT FOR NAVIGATIONAL USE. © Jeppesen, 2018

FAIRBANKS Departure (R) 360°-179° 180°-359° 126.5 125.35	Apt Elev 439	Trans alt: 18000 1. GPS required. 2. RNAV 1.
--	------------------------	--

PUYVO 2 RNAV DEPARTURE (PUYVO2.PUYVO)



TAKEOFF OBSTACLE NOTES
 Rwy 2L: Building 330 from DER, 251 left of centerline, 13 AGL/448 MSL. Trees beginning 2256 from DER, 937 right of centerline, up to 84 AGL/517 MSL. Pole, transmission line, catenary, and trees beginning 1961 from DER, 666 left of centerline, up to 78 AGL/514 MSL.
 Rwy 20R: Building 7 from DER, 424 right of centerline, 22 AGL/447 MSL. Light and navaid 10 from DER, 65 right of centerline, 1 AGL/437 MSL. Light 10 from DER, 64 left of centerline, 1 AGL/436 MSL. Trees beginning 1093 from DER, 786 left of centerline, up to 54 AGL/483 MSL. Trees beginning 1799 from DER, 714 right of centerline, up to 66 AGL/492 MSL.

This SID requires take-off minimums (for standard minimums, refer to airport chart):
 Rwy 2L: Standard (or lower than standard, if authorized) with minimum climb of 500 per NM to 3100.
 Rwy 20R: Standard (or lower than standard, if authorized) with minimum climb of 500 per NM to 1800.

Gnd speed-KT	75	100	150	200	250	300
500 per NM	625	833	1250	1667	2083	2500

RWY	INITIAL CLIMB	TOP ALTITUDE
2L	Climb heading 020° to 1800, then LEFT turn direct JIPEN, then on PUYVO Transition.	Assigned by ATC
20R	Climb heading 200° to 1800, then RIGHT turn direct JIPEN, then on PUYVO Transition.	

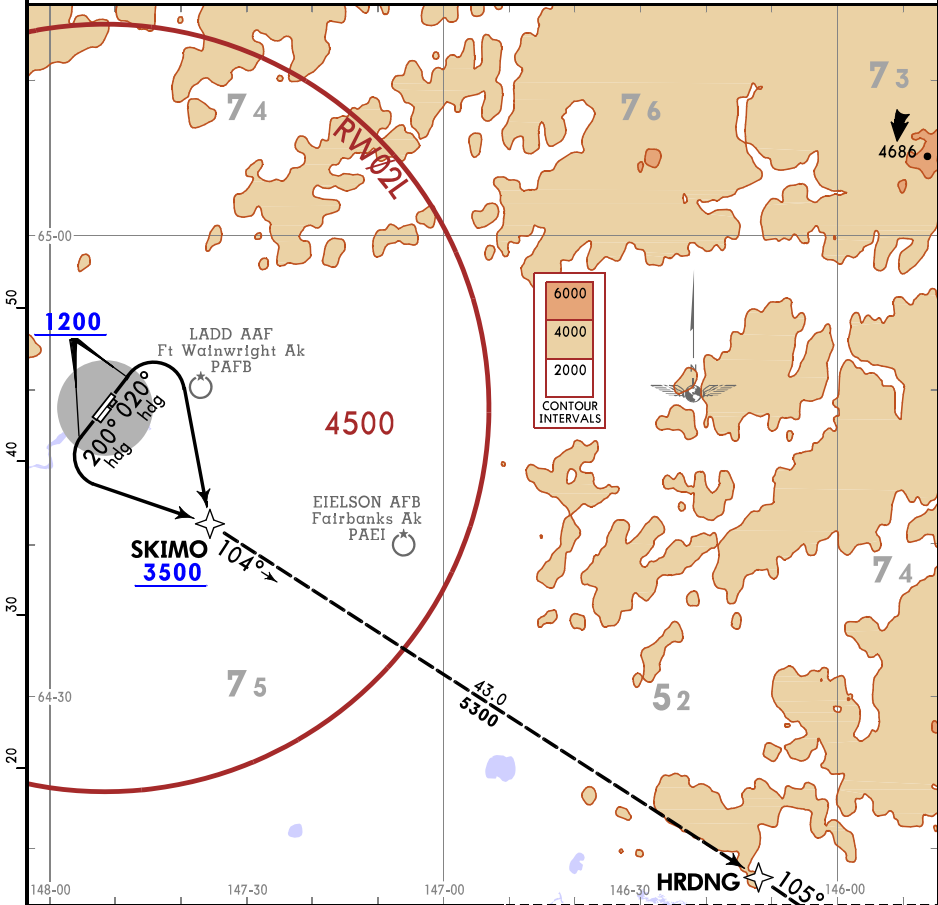
CHANGES: New format.

© JEPPESEN, 2018. ALL RIGHTS RESERVED.

Reproduced with permission of Jeppesen. NOT FOR NAVIGATIONAL USE. © Jeppesen, 2018

FAIRBANKS Departure (R)		Apt Elev 439	Trans alt: 18000 1. GPS required. 2. RNAV 1. 3. EXPECT to cross RDFLG at or below 17000 when DELTA ATCAA is active.
360°-179° 126.5	180°-359° 125.35		

RDFLG 2 RNAV DEPARTURE (RDFLG2.RDFLG)



TAKEOFF OBSTACLE NOTES

Rwy 2L: Building 330 from DER, 251 left of centerline, 13 AGL/448 MSL. Trees beginning 2256 from DER, 937 right of centerline, up to 84 AGL/517 MSL. Pole, transmission line, catenary, and trees beginning 1961 from DER, 666 left of centerline, up to 78 AGL/514 MSL.
Rwy 20R: Building 7 from DER, 424 right of centerline, 22 AGL/447 MSL. Light and navaid 10 from DER, 65 right of centerline, 1 AGL/437 MSL. Light 10 from DER, 64 left of centerline, 1 AGL/436 MSL. Trees beginning 1093 from DER, 786 left of centerline, up to 54 AGL/483 MSL. Trees beginning 1799 from DER, 714 right of centerline, up to 66 AGL/492 MSL.

NOT TO SCALE

This SID requires take-off minimums (for standard minimums, refer to airport chart):
Rwys 2L, 20R: Standard (or lower than standard, if authorized) with minimum climb of 500 per NM to 1200.

Gnd speed-KT	75	100	150	200	250	300
500 per NM	625	833	1250	1667	2083	2500

RWY	INITIAL CLIMB	TOP ALTITUDE
2L	Climb heading 020° to 1200, then RIGHT turn direct SKIMO, cross SKIMO at or above 3500, then on RDFLG Transition.	Assigned by ATC
20R	Climb heading 200° to 1200, then LEFT turn direct SKIMO, cross SKIMO at or above 3500, then on RDFLG Transition.	