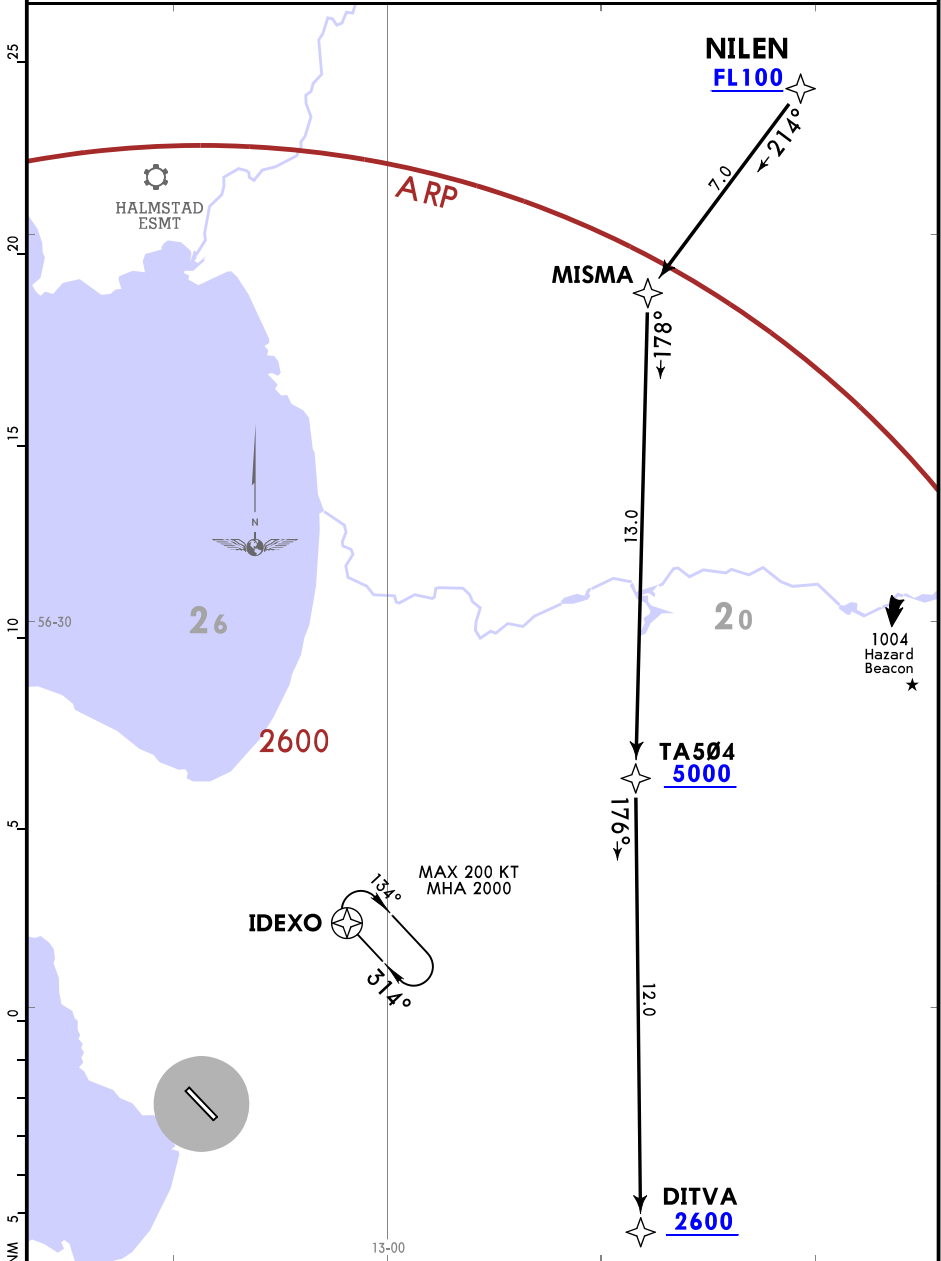


Apt Elev
62

Alt Set: hPa Trans level: By ATC

- 1. RNAV (GNSS)
- 2. RNAV 1 (P-RNAV) approval required.
- 3. STARs are also noise abatement routings. Strict adherence to assigned route is mandatory to avoid unnecessary noise disturbances.

NILEN 1G [NILE1G] RWY 32 RNAV ARRIVAL



ROUTING

NILEN (FL100+) - MISMA - TA504 (5000+) - DITVA (2600+).

CHANGES: Printing sequence (new format).

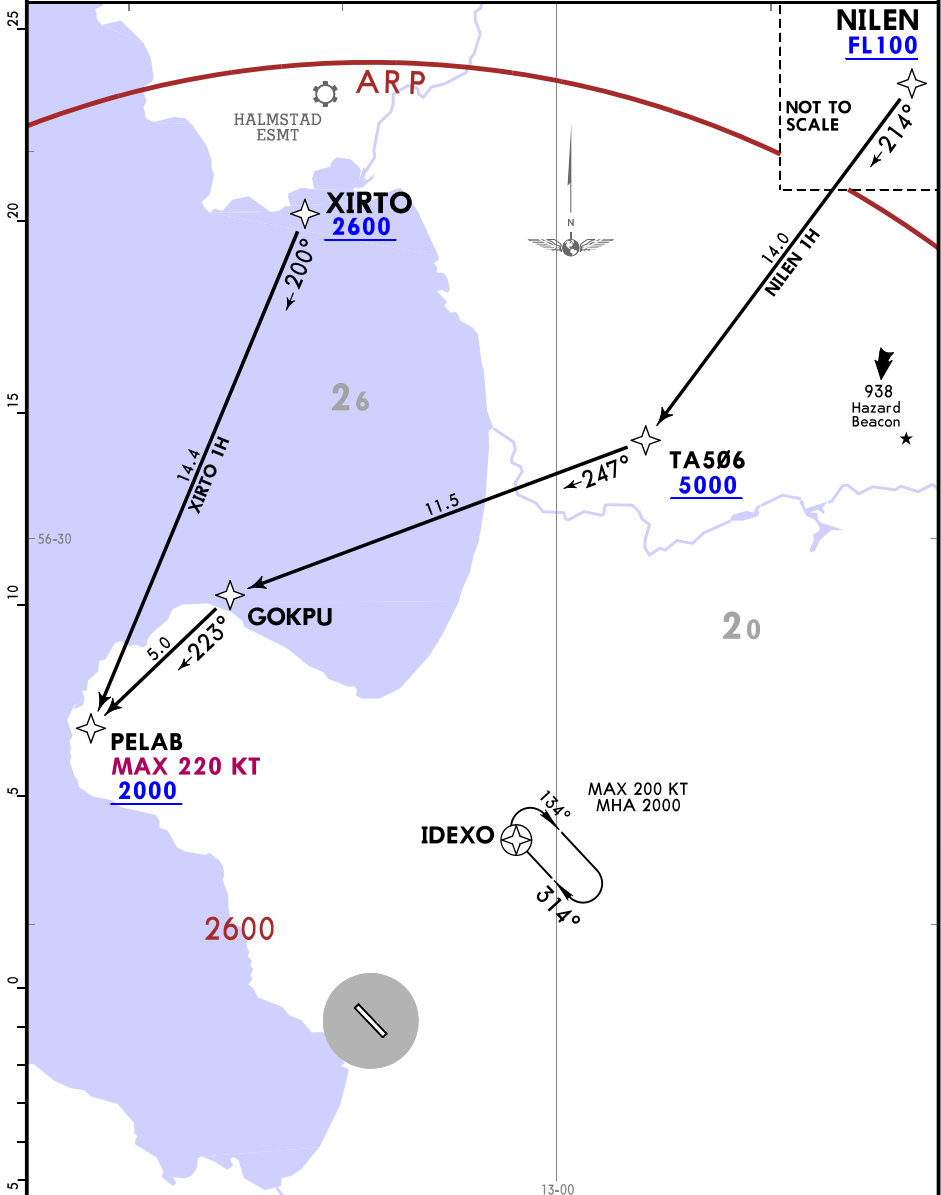
© JEPPESEN, 2018. ALL RIGHTS RESERVED.

Reproduced with permission of Jeppesen. NOT FOR NAVIGATIONAL USE. © Jeppesen, 2018

Apt Elev
62

Alt Set: hPa Trans level: By ATC
 1. RNAV (GNSS)
 2. RNAV 1 (P-RNAV) approval required.
 3. STARs are also noise abatement routings. Strict adherence to assigned route is mandatory to avoid unnecessary noise disturbances.

NILEN 1H [NILE1H]
 XIRTO 1H [XIRT1H]
 RWY 14 RNAV ARRIVALS



STAR	ROUTING
NILEN 1H	NILEN (FL100+) - TA506 (5000+) - GOKPU - PELAB (K220-; 2000+).
XIRTO 1H	XIRTO (2600+) - PELAB (K220-; 2000+).