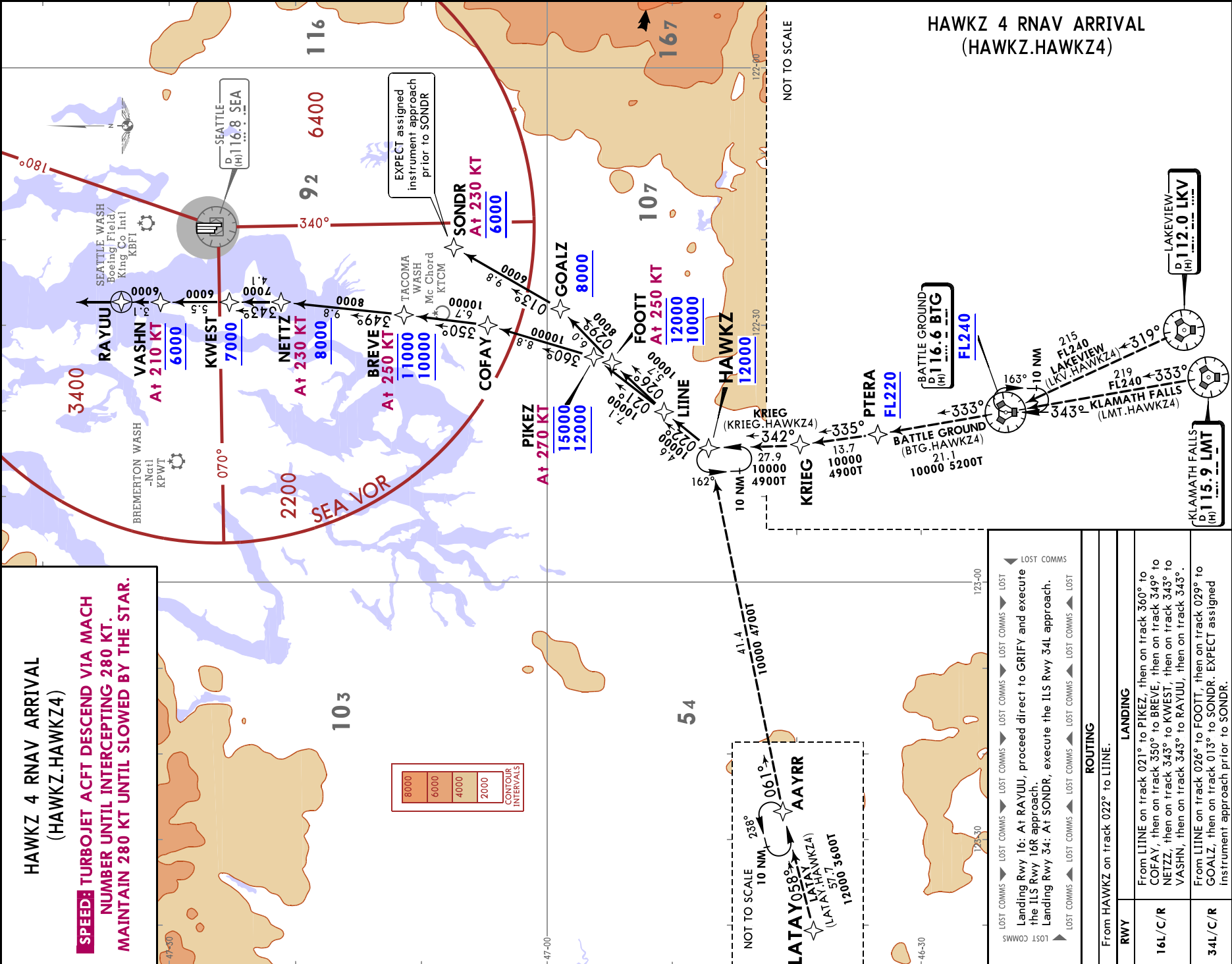


- 1. DME/DME/IRU or GPS required. 2. RADAR required. 3. RNAV 1.
- 4. LATAY Transition: For non-GPS equipped aircraft ONP DME must be operational.
- 5. For non-RNP aircraft landing Rwy 16 L/C/R, EXPECT RADAR vectors to final approach prior to RAYUU.

D-ATIS	Apt Elev	Alt Set: INCHES
118.0	433	Trans level: FL180

HAWKZ 4 RNAV ARRIVAL
(HAWKZ.HAWKZ4)

SPEED: TURBOJET ACFT DESCEND VIA MACH
NUMBER UNTIL INTERCEPTING 280 KT.
MAINTAIN 280 KT UNTIL SLOWED BY THE STAR.



ROUTING	
From HAWKZ on track 022° to LIINE.	
LANDING	
16L/C/R	From LIINE on track 021° to PIKEZ, then on track 360° to COFAY, then on track 350° to BREVE, then on track 349° to NETTZ, then on track 343° to KWEST, then on track 343° to VASHN, then on track 343° to RAYUU, then on track 343°.
34L/C/R	From LIINE on track 026° to FOOT, then on track 029° to GOALZ, then on track 013° to SOND. EXPECT assigned Instrument approach prior to SOND.